

**DISCLAIMER**

THIS MAP WAS PREPARED FOR LOCAL PROPERTY ASSESSMENT PURPOSES ONLY. THE PARCELS SHOWN HEREON MAY NOT COMPLY WITH STATE AND LOCAL SUBDIVISION ORDINANCES. NO LIABILITY IS ASSUMED FOR THE USE OF THE INFORMATION HEREON.

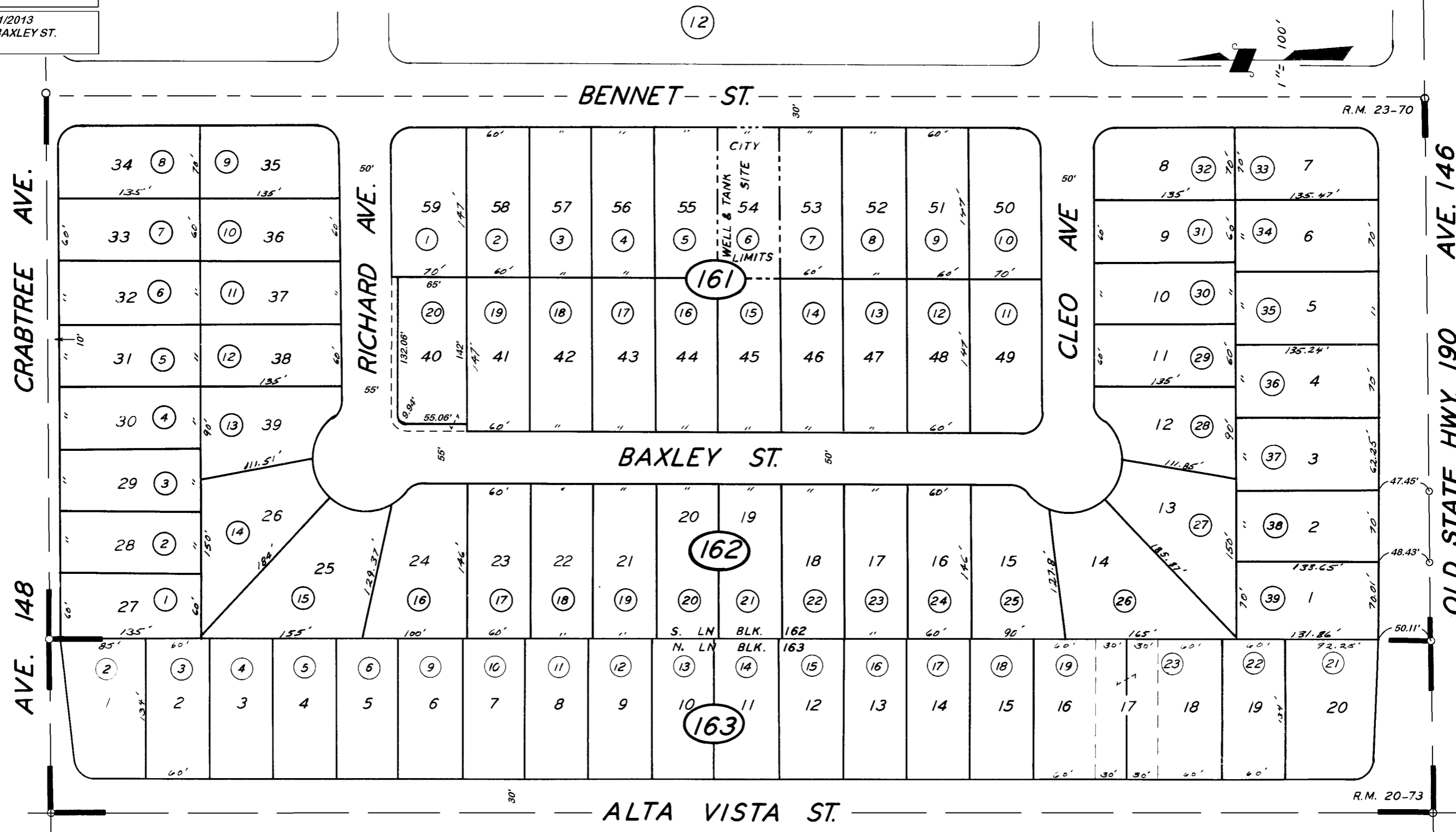
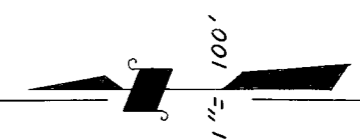
REVISED: 04/11/2013  
REASON: FIX BAXLEY ST.  
CAD TECH: CMB

E 1/2 OF NW 1/4 OF SE 1/4 SEC. 32, T.21S., R.28E., M.D.B.&M.

TAX CODE AREA  
004-003  
055-001

263-16

12



TRACT NO. 175, R.M. 20-73.  
TRACT NO. 330, R.M. 23-70.

17

VICINITY OF PORTERVILLE  
ASSESSOR'S MAPS BK. 263, PG. 16.  
COUNTY OF TULARE, CALIF.

NOTE — ASSESSOR'S BLOCK NUMBERS SHOWN IN ELLIPSES  
ASSESSOR'S PARCEL NUMBERS SHOWN IN CIRCLES

