

**DISCLAIMER**

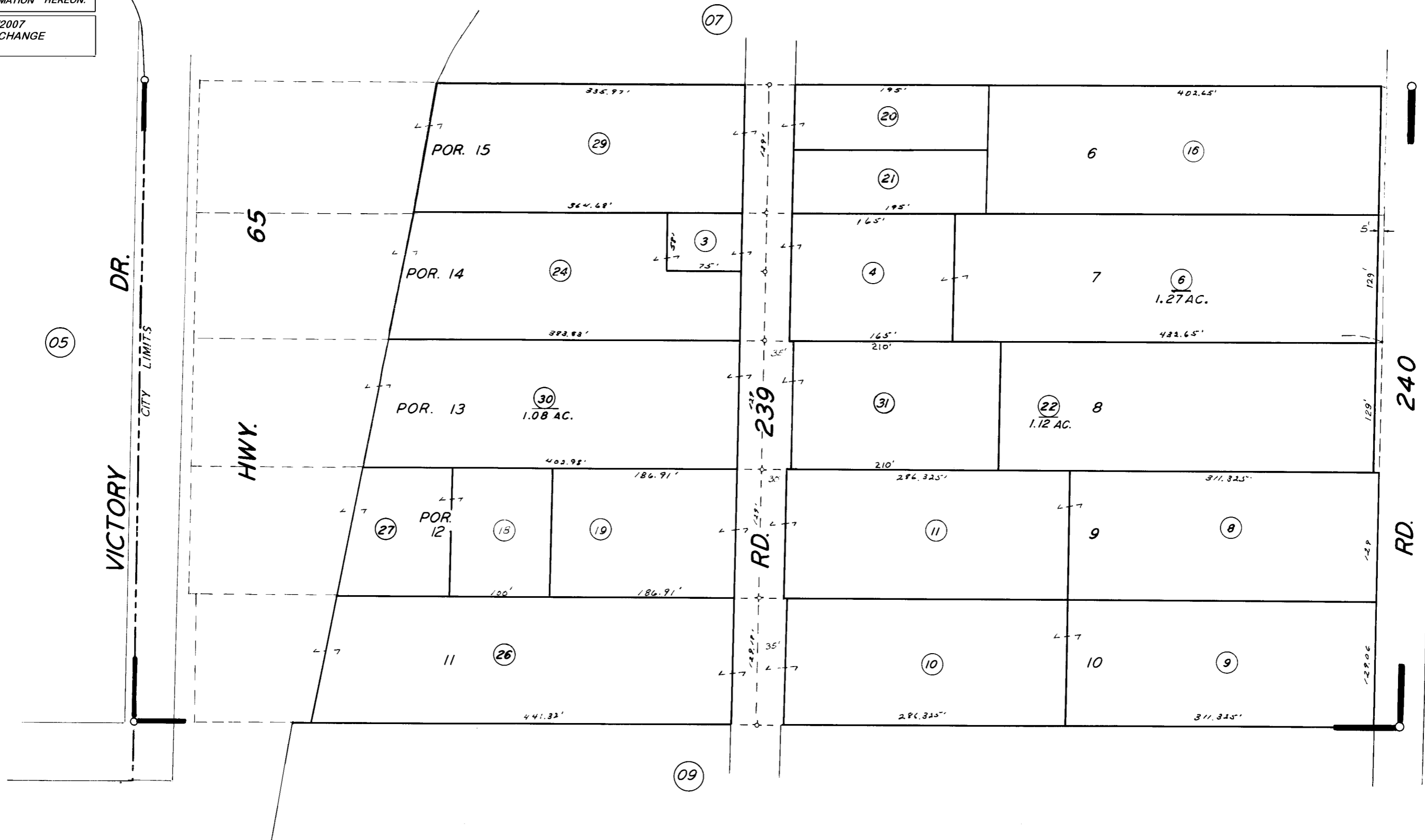
THIS MAP WAS PREPARED FOR LOCAL PROPERTY ASSESSMENT PURPOSES ONLY. THE PARCELS SHOWN HEREON MAY NOT COMPLY WITH STATE AND LOCAL SUBDIVISION ORDINANCES. NO LIABILITY IS ASSUMED FOR THE USE OF THE INFORMATION HEREON.

REVISED: 08/13/2007  
REASON: TRAC CHANGE  
CAD TECH: JRS

S'LY. POR. NE 1/4 OF NE 1/4 SEC. 3, T. 22 S., R. 27 E., M. D. B. & M.

TAX CODE AREA  
004-000  
004-130

268-08



POR. TRACT NO. 19 R.M. 19-53

ASSESSOR'S MAPS BK. 268, PG. 08.

COUNTY OF TULARE, CALIF.

NOTE — ASSESSOR'S BLOCK NUMBERS SHOWN IN ELLIPSES  
ASSESSOR'S PARCEL NUMBERS SHOWN IN CIRCLES

