

DISCLAIMER

THIS MAP WAS PREPARED FOR LOCAL PROPERTY ASSESSMENT PURPOSES ONLY. THE PARCELS SHOWN HEREON MAY NOT COMPLY WITH STATE AND LOCAL SUBDIVISION ORDINANCES. NO LIABILITY IS ASSUMED FOR THE USE OF THE INFORMATION HEREON.

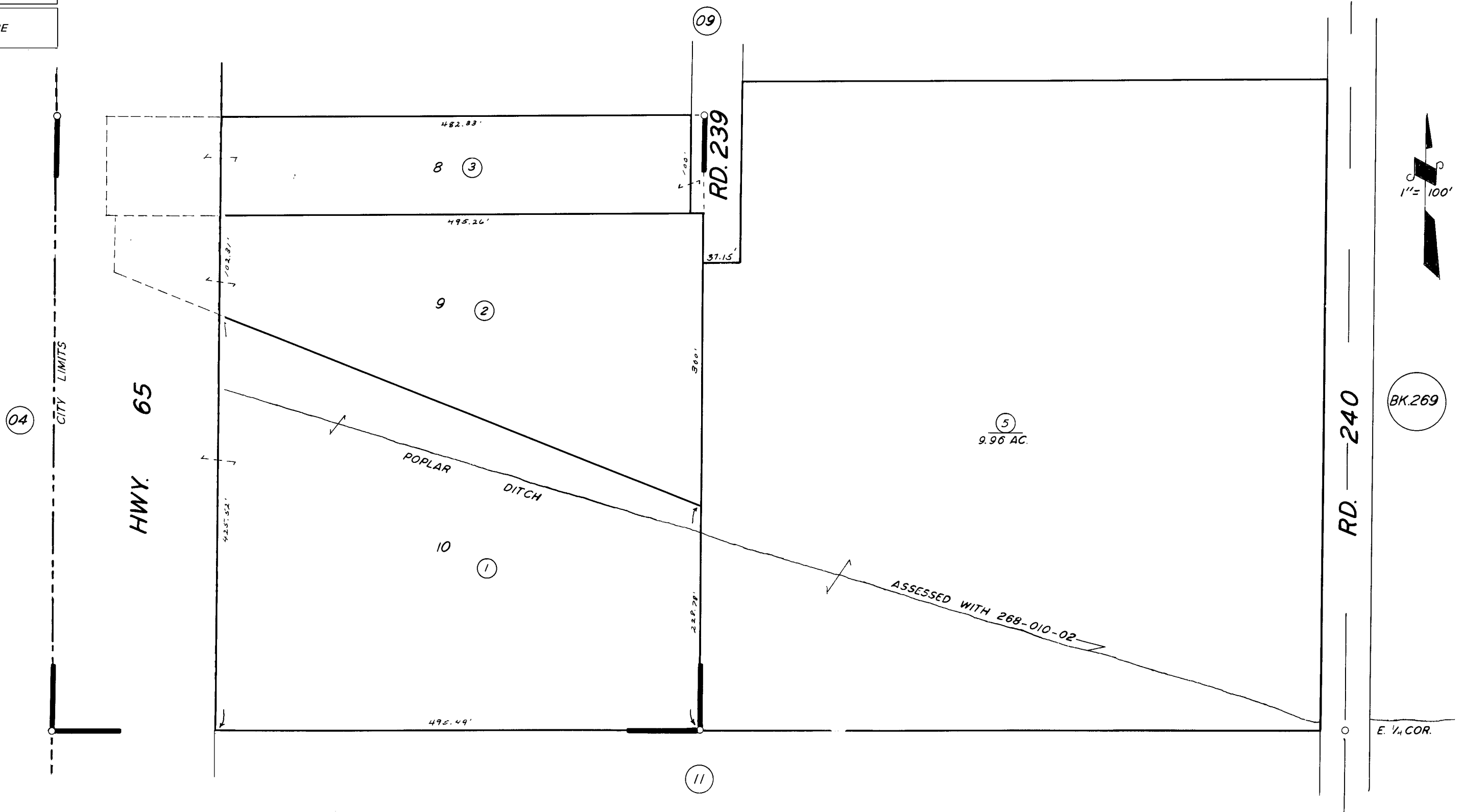
REVISED: 08/13/2007
REASON: TRAC CHANGE
CAD TECH: JRS

S'LY POR. SE 1/4 OF NE 1/4 SEC. 3, T.22 S., R.27 E., M. D. B. & M.

TAX CODE AREA **268-10**

004-000

004-130



POR. TRACT NO. 22 R.M. 19-57

ASSESSOR'S MAPS BK. 268, PG. 10.

COUNTY OF TULARE, CALIF.

NOTE - ASSESSOR'S BLOCK NUMBERS SHOWN IN ELLIPSES
ASSESSOR'S PARCEL NUMBERS SHOWN IN CIRCLES

