

N1/2 OF SW1/4 OF NW1/4 SEC. 2, T.22S., R.27E., M.D.B.&M.

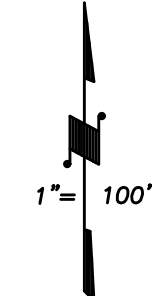
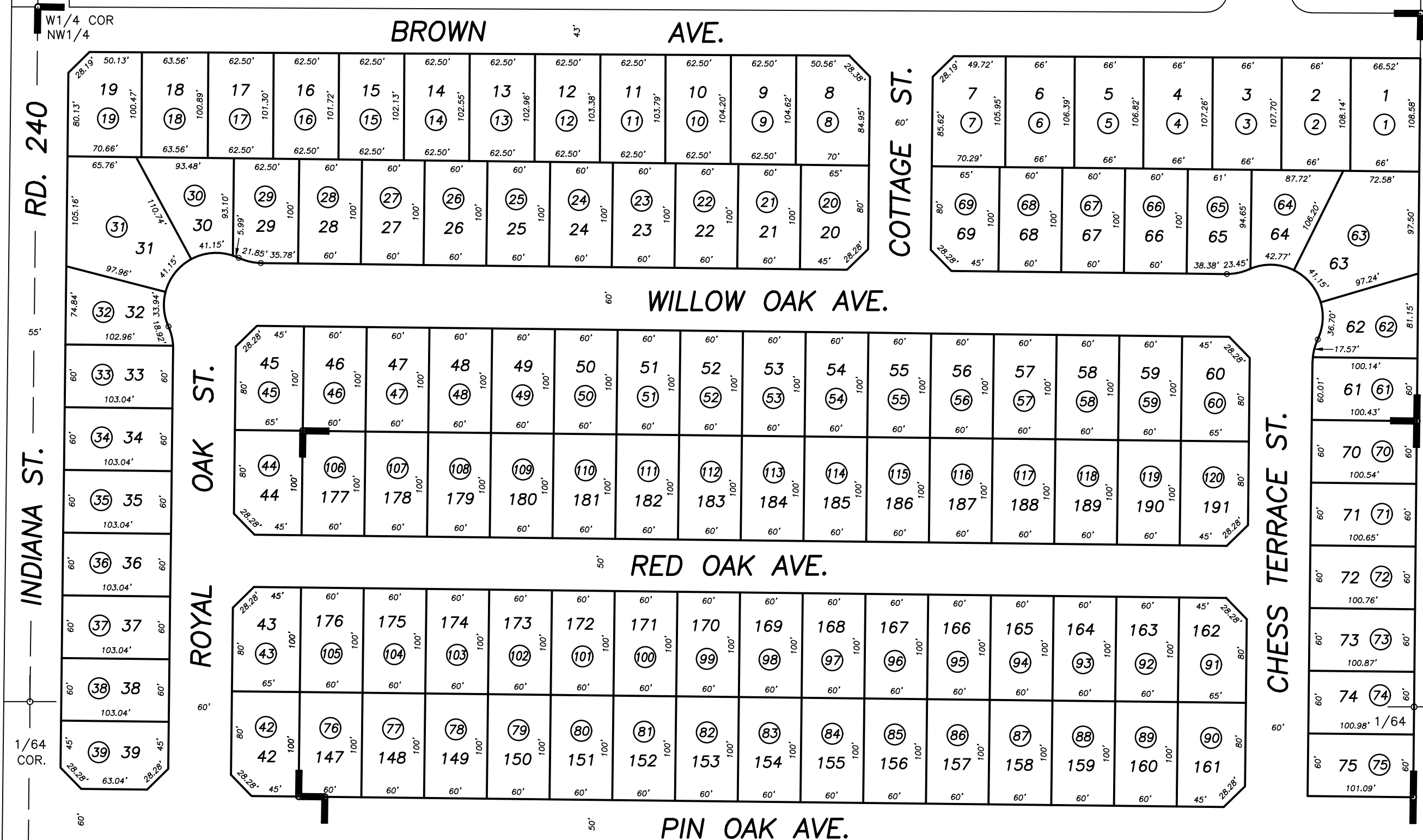
Tax Area Codes 269-18

004-130

01

CTR NW1/4

DISCLAIMER
THIS MAP WAS PREPARED FOR LOCAL PROPERTY ASSESSMENT PURPOSES ONLY AND THE PARCELS SHOWN HEREON MAY NOT COMPLY WITH STATE AND LOCAL SUBDIVISION ORDINANCES, AND NO LIABILITY IS ASSUMED FOR THE USE OF THE INFORMATION SHOWN HEREON. R & T CODE SEC. 327, 406.3, ETC.



BASIS OF BEARINGS:
R.M. 44-53

BK. 268

19

POR. ROYAL OAKS SUBDIVISION 1A, R.M. 44-53
POR. ROYAL OAKS SUBDIVISION PH. 2, R.M. 44-99

20

CITY OF PORTERVILLE
ASSESSOR'S MAPS BK. 269 , PG. 18
COUNTY OF TULARE, CALIFORNIA, U.S.A.

NOTE: Assessor's Parcel Numbers Shown in Circles 1 123
Assessor's Block Numbers Shown in Ellipses

2022-0062015	1/31/2023	JDF
REVISION	DATE	TECH