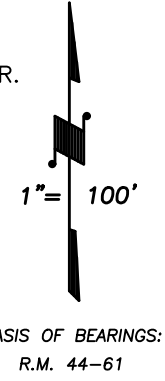
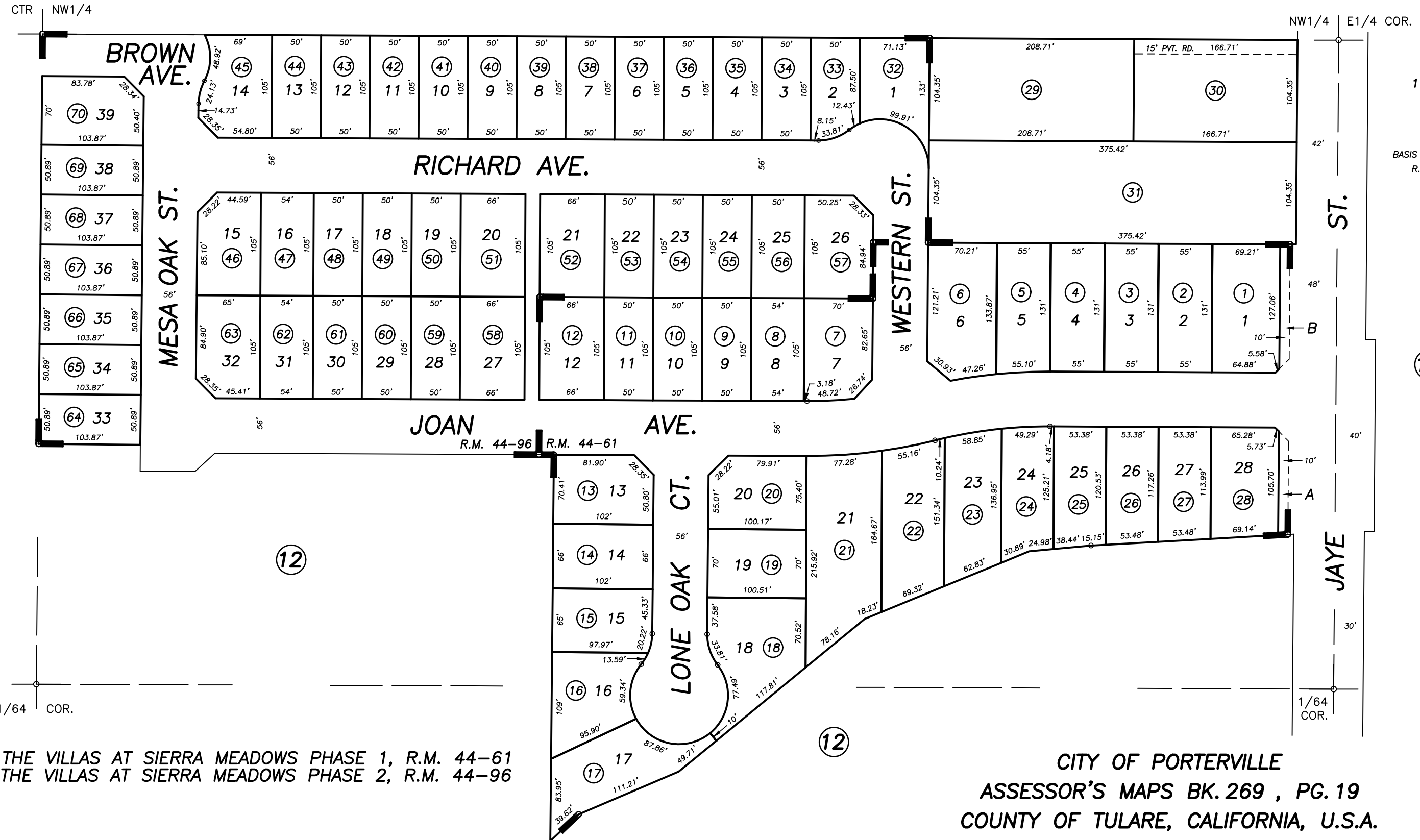


**DISCLAIMER**  
THIS MAP WAS PREPARED FOR LOCAL PROPERTY ASSESSMENT PURPOSES ONLY AND THE PARCELS SHOWN HEREON MAY NOT COMPLY WITH STATE AND LOCAL SUBDIVISION ORDINANCES, AND NO LIABILITY IS ASSUMED FOR THE USE OF THE INFORMATION SHOWN HEREON. R & T CODE SEC. 327, 408.3, ETC.

04



18

13

12

12

POR. THE VILLAS AT SIERRA MEADOWS PHASE 1, R.M. 44-61  
POR. THE VILLAS AT SIERRA MEADOWS PHASE 2, R.M. 44-96

CITY OF PORTERVILLE  
ASSESSOR'S MAPS BK. 269 , PG. 19  
COUNTY OF TULARE, CALIFORNIA, U.S.A.