

DISCLAIMER

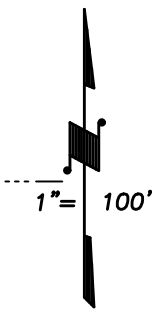
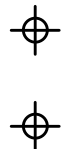
THIS MAP WAS PREPARED FOR LOCAL PROPERTY ASSESSMENT PURPOSES ONLY AND THE PARCELS SHOWN HEREON MAY NOT COMPLY WITH STATE AND LOCAL SUBDIVISION ORDINANCES, AND NO LIABILITY IS ASSUMED FOR THE USE OF THE INFORMATION SHOWN HEREON.

N1/2 OF SE1/4 OF SW1/4 SEC.6, T.22S., R.28E., M.D.B.&M.

Tax Area Codes 271-03

126-001

126-006



BASIS OF BEARINGS: L.S. 21-68

CTR. SW.1/4

E.1/4 COR. SW.1/4

VANDALIA WATER DISTRICT

B.N.S.F.R.R. S.B.E. 804-54-40-7

B.N.S.F.R.R. S.B.E. 804-54-40-13

HILLCREST ST.

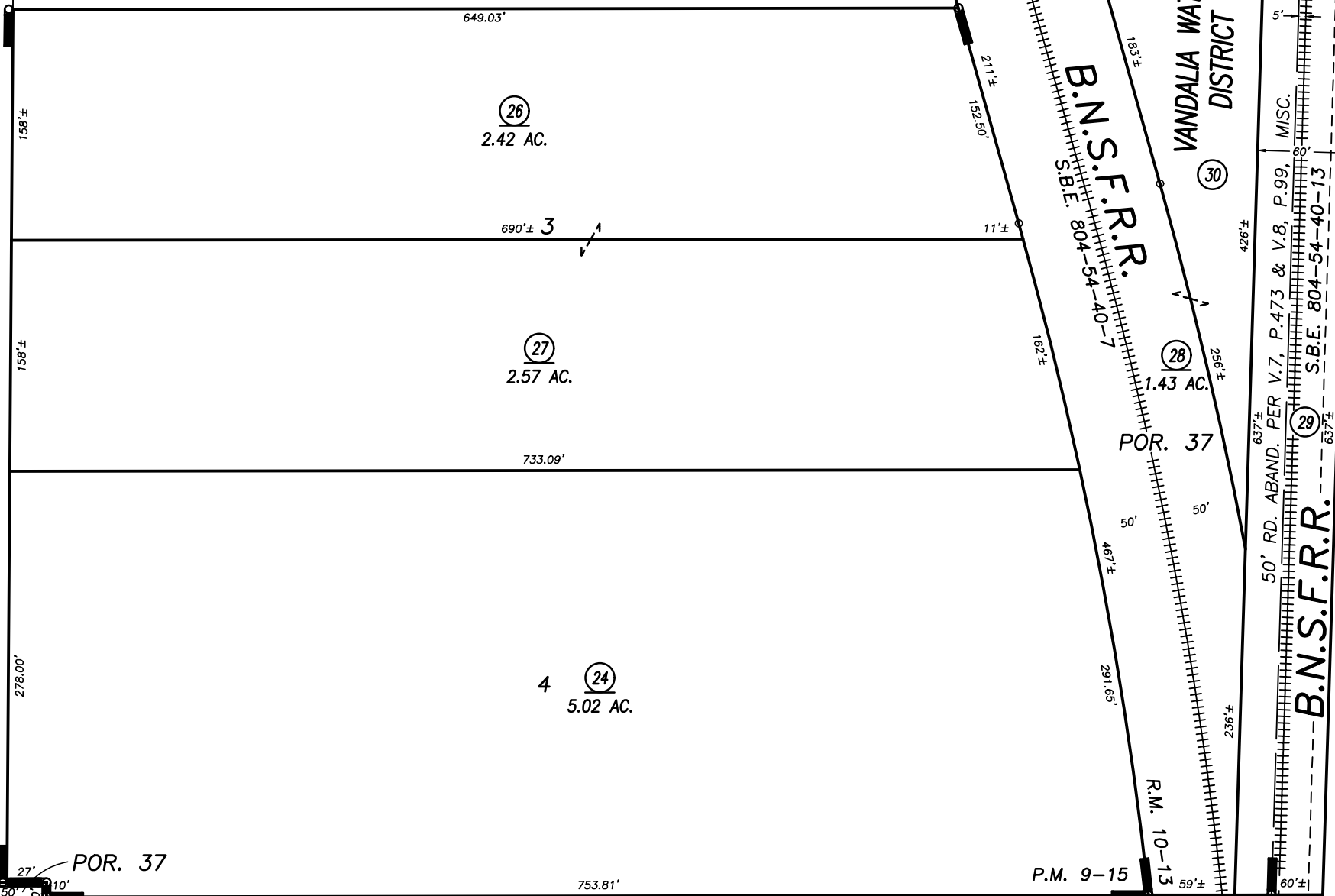
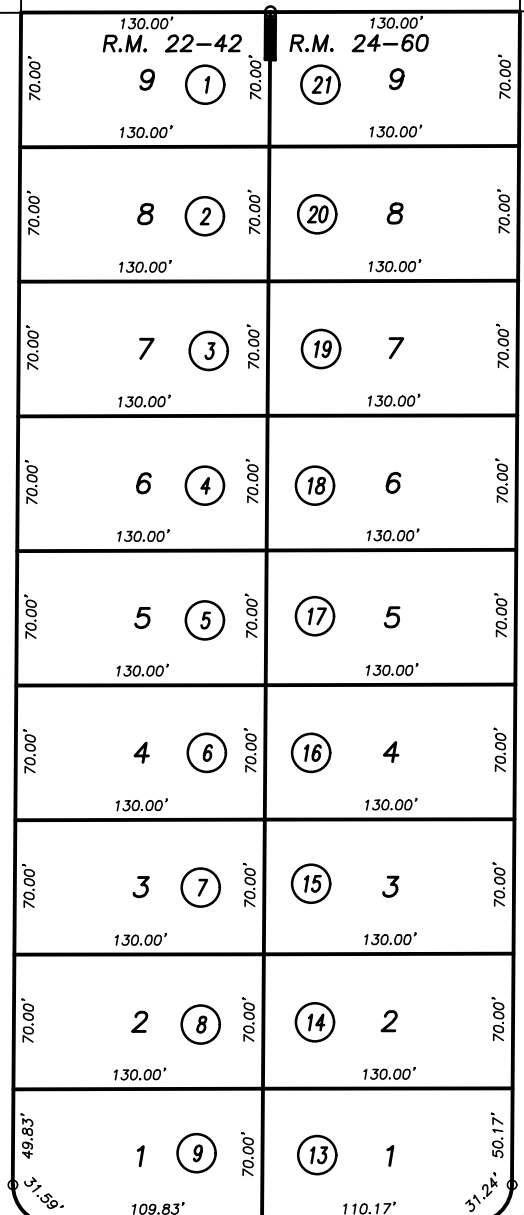
RD. 260

STATE ST.

CRESTVIEW ST.

RD. 258

WARZEE AVE.



01

04

09

02

POR. MENTZ SUB. NO. 3, R.M. 10-13  
POR. TRACT NO. 288, R.M. 22-42  
POR. TRACT NO. 413, R.M. 24-60  
POR. PARCEL MAP NO. 815, P.M. 9-15

VICINITY OF PORTERVILLE  
ASSESSOR'S MAPS BK. 271 , PG.03  
COUNTY OF TULARE, CALIFORNIA, U.S.A.