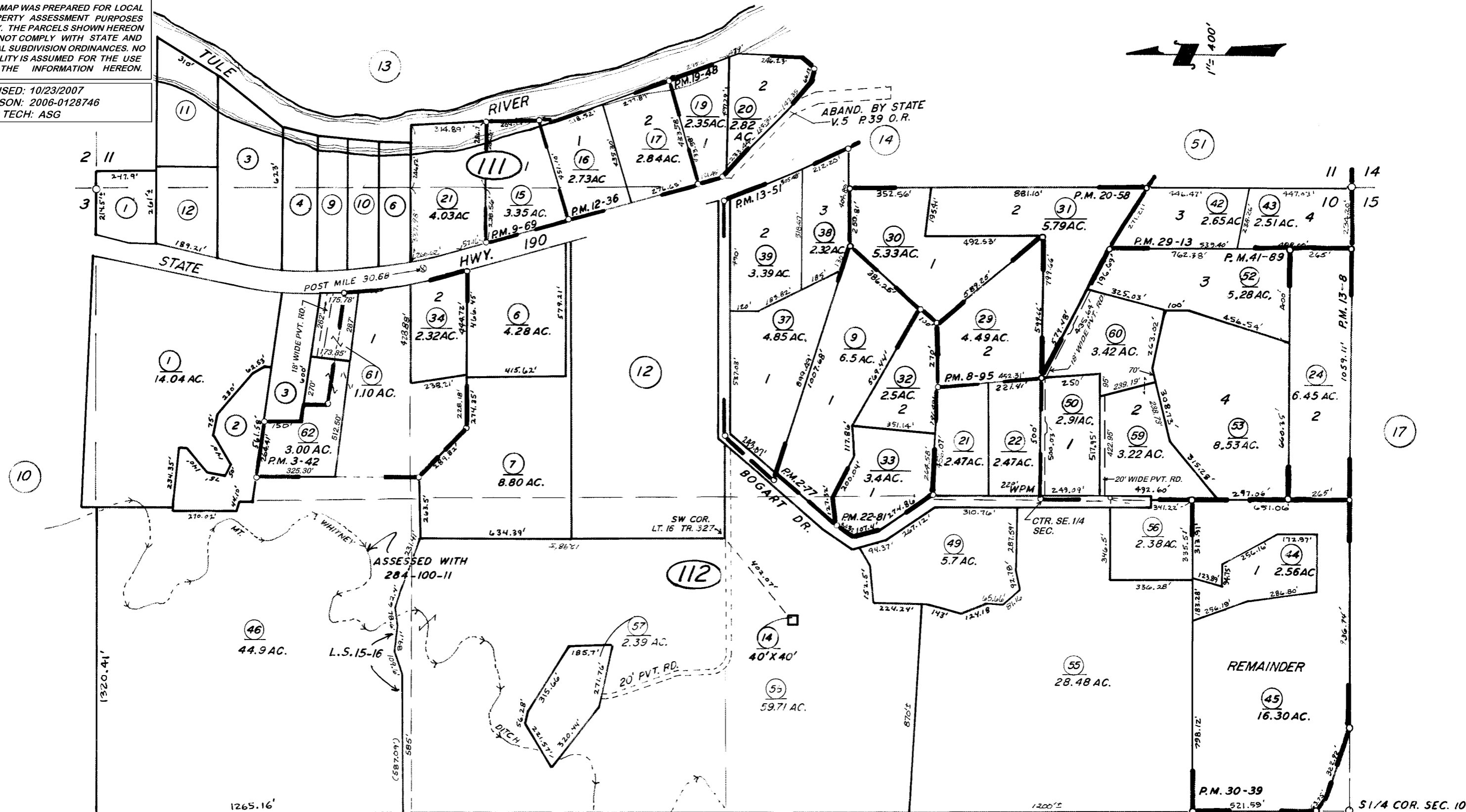
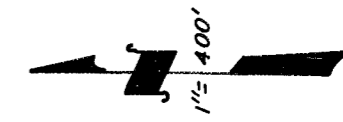


DISCLAIMER
THIS MAP WAS PREPARED FOR LOCAL PROPERTY ASSESSMENT PURPOSES ONLY. THE PARCELS SHOWN HEREON MAY NOT COMPLY WITH STATE AND LOCAL SUBDIVISION ORDINANCES. NO LIABILITY IS ASSUMED FOR THE USE OF THE INFORMATION HEREON.

REVISED: 10/23/2007
REASON: 2006-0128746
CAD TECH: ASG



PARCEL MAP 177, P.M. 2-77
PARCEL MAP 242, P.M. 3-42
PARCEL MAP 795, P.M. 8-95
PARCEL MAP 868, P.M. 9-69
PARCEL MAP 1135, P.M. 12-36
PARCEL MAP 1207, P.M. 13-8
POR. PARCEL MAP 1250, P.M. 13-51
PARCEL MAP 1847, P.M. 19-48

PARCEL MAP 1957, P.M. 20-58
PARCEL MAP 2180, P.M. 22-81
POR. PARCEL MAP 2812, P.M. 29-13
PARCEL MAP 2938, P.M. 30-39
RECORD OF SURVEY, L.S. 15-16
PARCEL MAP NO. 4085, P.M. 41-89

VICINITY OF SPRINGVILLE
ASSESSOR'S MAPS BK. 284, PG. 11
COUNTY OF TULARE, CALIF.

NOTE-ASSESSOR'S BLOCK NUMBERS SHOWN IN ELLIPSES
ASSESSOR'S PARCEL NUMBERS SHOWN IN CIRCLES