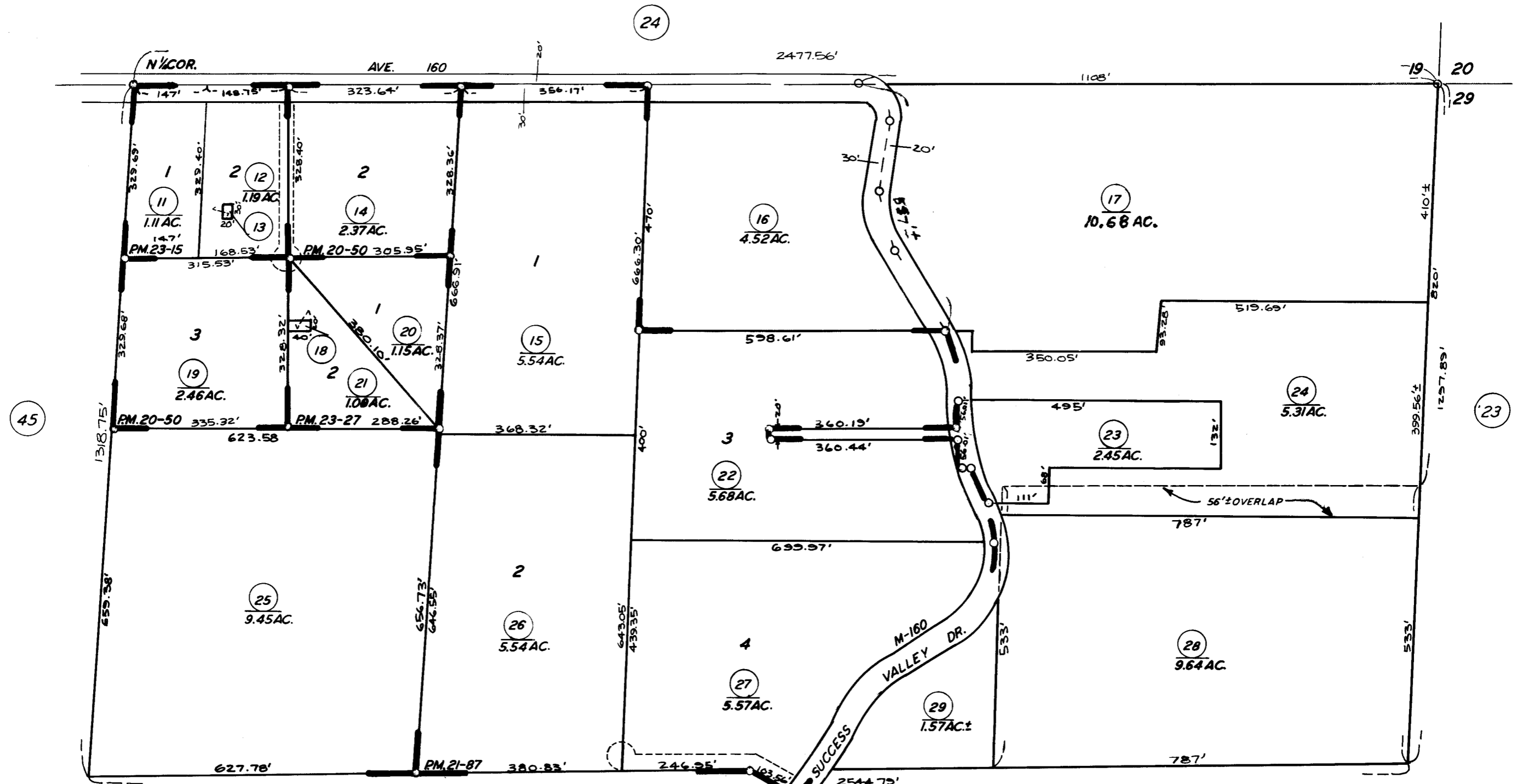


N $\frac{1}{2}$ OF NE $\frac{1}{4}$ SEC. 30, T.21S., R.29E., M.D.B. & M.

TAX CODE AREA **284-40**
 64-001
 64-003



PARCEL MAP 1949
 PARCEL MAP 2086
 PARCEL MAP 2214
 PARCEL MAP 2226

P.M. 20-50
 P.M. 21-87
 P.M. 23-15
 P.M. 23-27

ASSESSOR'S MAPS BK. 284 PG.40
 COUNTY OF TULARE, CALIF.

NOTE—ASSESSOR'S BLOCK NUMBERS SHOWN IN ELLIPSES
 ASSESSOR'S PARCEL NUMBERS SHOWN IN CIRCLES