

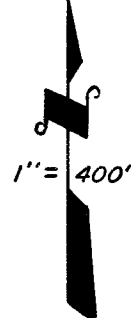
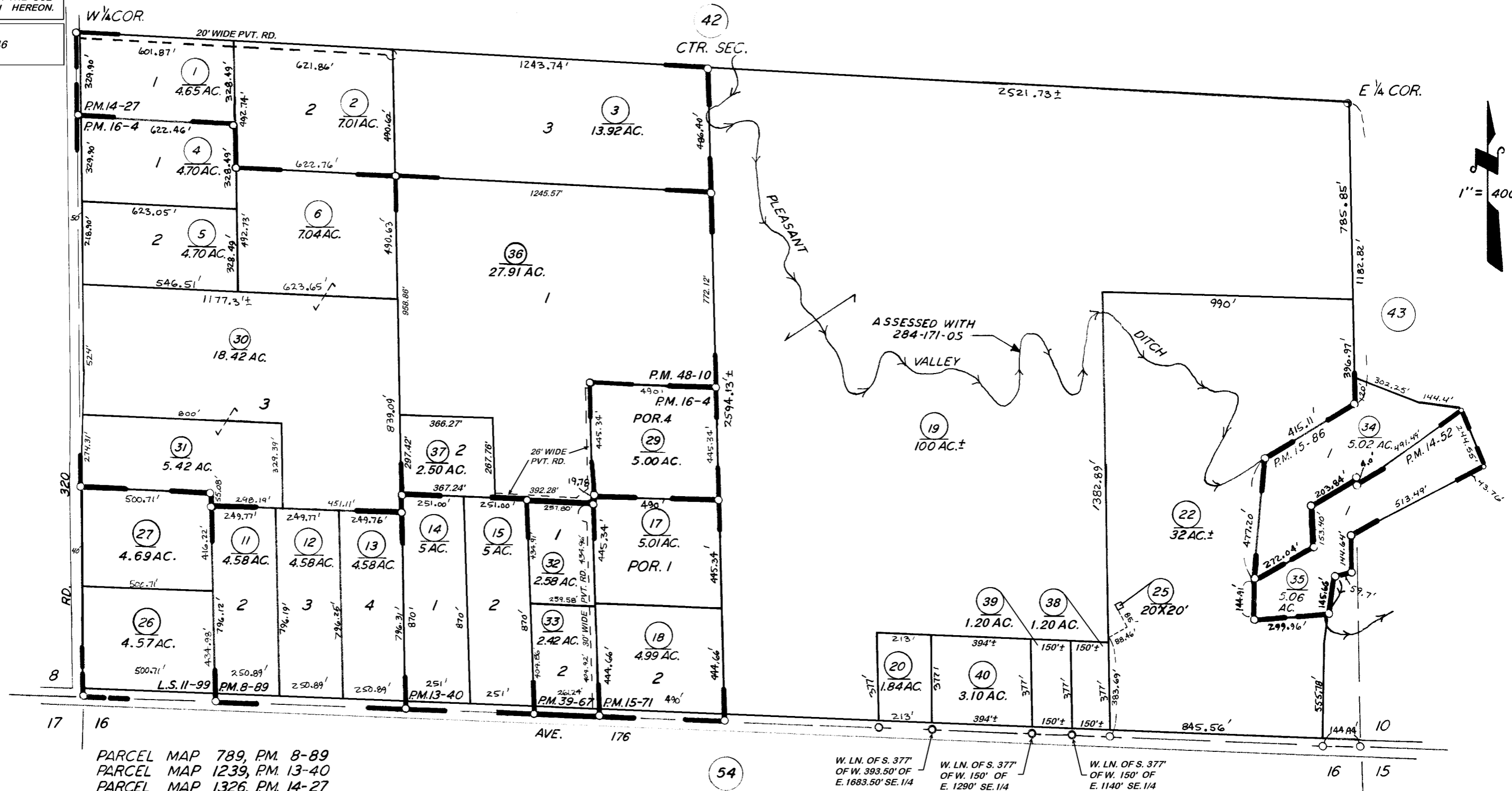
$S\frac{1}{2}$ OF SEC. 9, T. 21 S., R. 29 E., M.D.B. & M.

TAX CODE AREA **284-50**
136-006

DISCLAIMER

THIS MAP WAS PREPARED FOR LOCAL PROPERTY ASSESSMENT PURPOSES ONLY. THE PARCELS SHOWN HEREON MAY NOT COMPLY WITH STATE AND LOCAL SUBDIVISION ORDINANCES. NO LIABILITY IS ASSUMED FOR THE USE OF THE INFORMATION HEREON.

REVISED: 10/24/2007
REASON: 2006-0055646
CAD TECH: ASG



- PARCEL MAP 789, P.M. 8-89
- PARCEL MAP 1239, P.M. 13-40
- PARCEL MAP 1326, P.M. 14-27
- PARCEL MAP 1351, P.M. 14-52
- PARCEL MAP 1470, P.M. 15-71
- PARCEL MAP 1485, P.M. 15-86
- PARCEL MAP 1503, P.M. 16-4
- RECORD OF SURVEY, L.S. 11-99(SW $\frac{1}{4}$)
- PARCEL MAP 3864, P.M. 39-67
- PARCEL MAP NO. 4705, P.M. 48-10

W. LN. OF S. 377' OF W. 393.50' OF E. 1683.50' SE. 1/4
W. LN. OF S. 377' OF W. 150' OF E. 1290' SE. 1/4
W. LN. OF S. 377' OF W. 150' OF E. 1140' SE. 1/4

VICINITY OF SPRINGVILLE
ASSESSOR'S MAPS BK. 284 PG. 50
COUNTY OF TULARE, CALIF.

NOTE—ASSESSOR'S BLOCK NUMBERS SHOWN IN ELLIPSES
ASSESSOR'S PARCEL NUMBERS SHOWN IN CIRCLES