

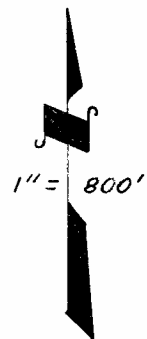
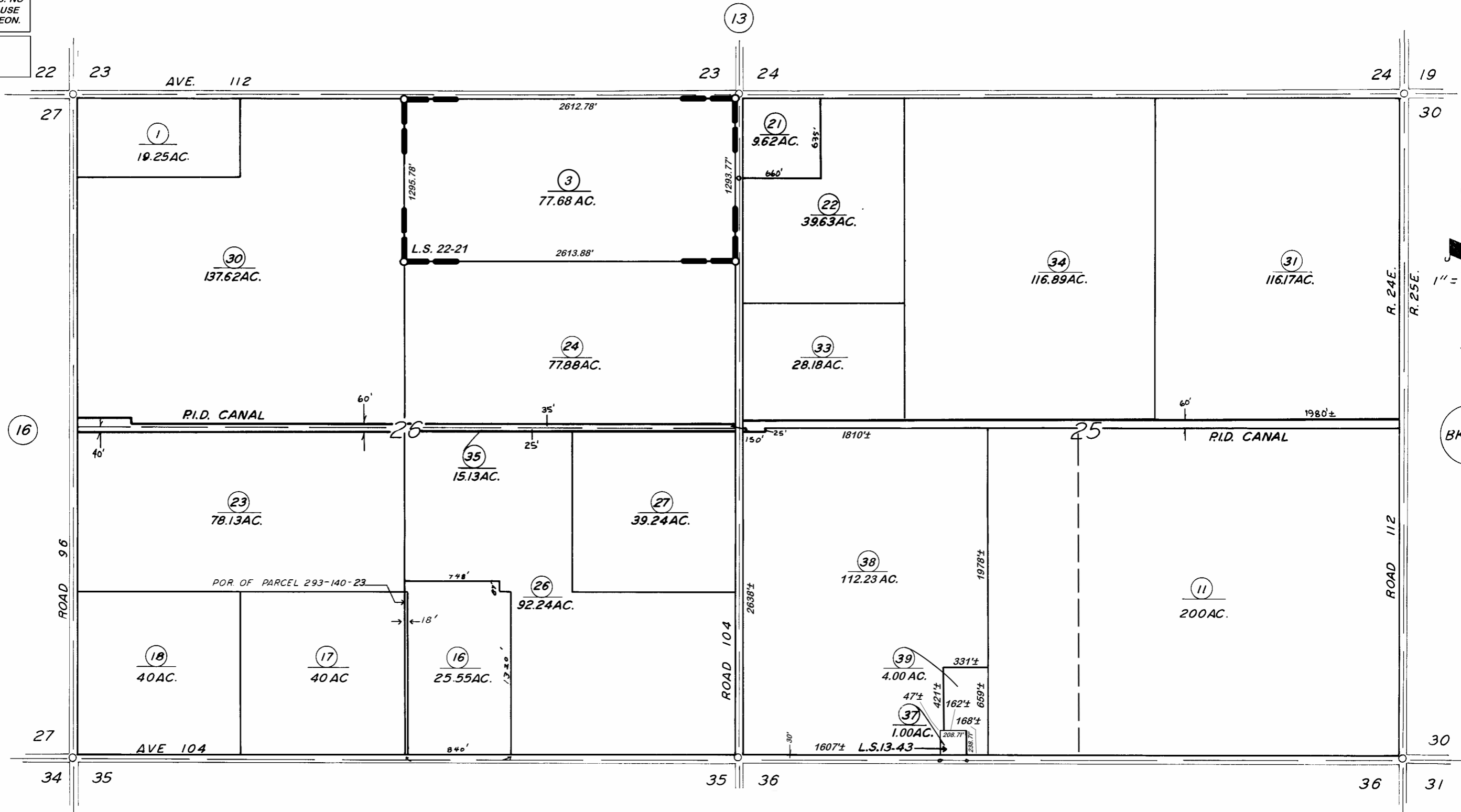
DISCLAIMER
 THIS MAP WAS PREPARED FOR LOCAL PROPERTY ASSESSMENT PURPOSES ONLY. THE PARCELS SHOWN HEREON MAY NOT COMPLY WITH STATE AND LOCAL SUBDIVISION ORDINANCES. NO LIABILITY IS ASSUMED FOR THE USE OF THE INFORMATION HEREON.

REVISED: 6/30/2021
 REASON: 2020-0060249
 CAD TECH: NFL

SEC'S. 25 & 26, T.22S., R.24E., M.D.B. & M.

TAX CODE AREA
 124-001

293-14



BK. 295

RECORD OF SURVEY, L.S. 13-43
 RECORD OF SURVEY, L.S. 22-21

VICINITY OF PIXLEY
 ASSESSOR'S MAPS BK. 293, PG. 14
 COUNTY OF TULARE, CALIF.

NOTE — ASSESSOR'S BLOCK NUMBERS SHOWN IN ELLIPSES
 ASSESSOR'S PARCEL NUMBERS SHOWN IN CIRCLES