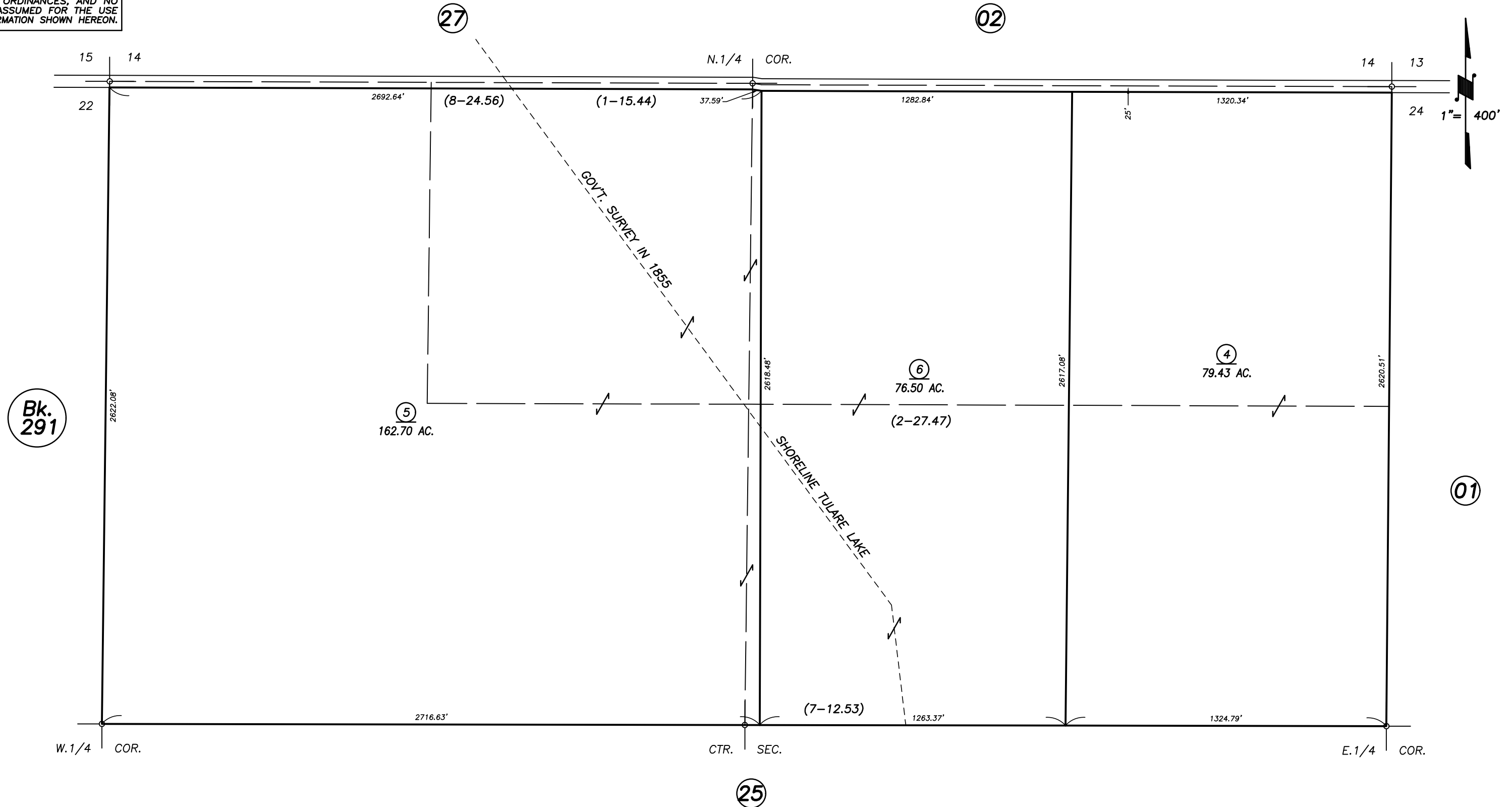


**DISCLAIMER**  
 THIS MAP WAS PREPARED FOR LOCAL PROPERTY ASSESSMENT PURPOSES ONLY AND THE PARCELS SHOWN HEREON MAY NOT COMPLY WITH STATE AND LOCAL SUBDIVISION ORDINANCES, AND NO LIABILITY IS ASSUMED FOR THE USE OF THE INFORMATION SHOWN HEREON.

N1/2 SEC.23, T.22S., R.23E., M.D.B.&M.

Tax Area Codes 293-26  
 166-008



Bk. 291

VICINITY OF ANGIOLA  
 ASSESSOR'S MAPS BK. 293 , PG. 26  
 COUNTY OF TULARE, STATE OF CALIFORNIA, U.S.A.

NOTE: Assessor's Parcel Numbers Shown in Circles (1) (123)  
 Assessor's Block Numbers Shown in Elipses (1) (123)

2000-0057399	04/10/2002	RJL
REVISION	DATE	TECH