

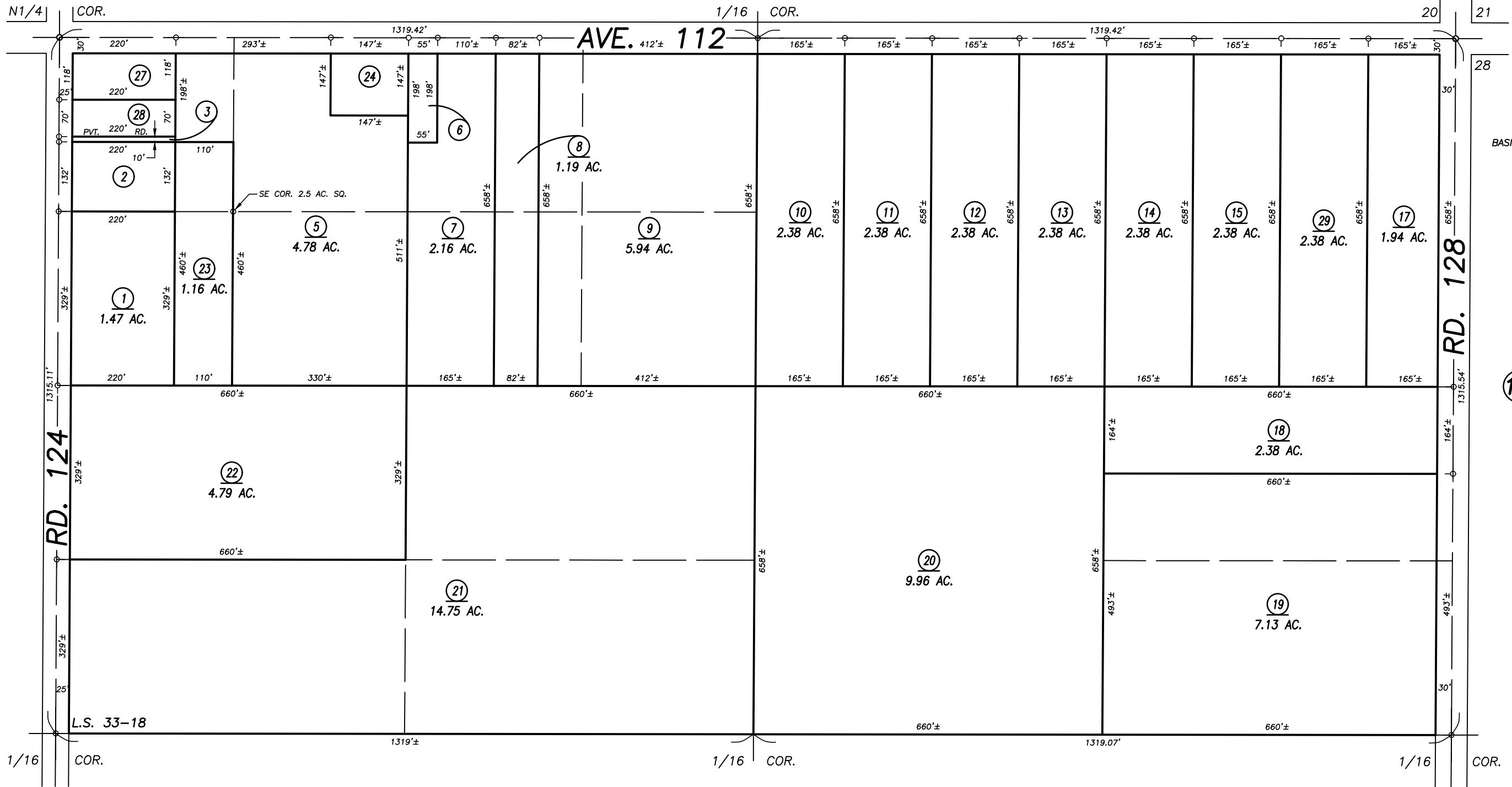
N1/2 OF NE1/4 SEC.29, T.22S., R.25E., M.D.B.&M.

Tax Area Codes 295-18

124-001

124-011

DISCLAIMER
 THIS MAP WAS PREPARED FOR LOCAL PROPERTY ASSESSMENT PURPOSES ONLY AND THE PARCELS SHOWN HEREON MAY NOT COMPLY WITH STATE AND LOCAL SUBDIVISION ORDINANCES, AND NO LIABILITY IS ASSUMED FOR THE USE OF THE INFORMATION SHOWN HEREON. R & T CODE SEC. 327, 408.3, ETC.



1" = 200'
 BASIS OF BEARINGS:
 L.S. 33-18

VICINITY OF PIXLEY
 ASSESSOR'S MAPS BK. 295 , PG. 18
 COUNTY OF TULARE, CALIFORNIA, U.S.A.

NOTE: Assessor's Parcel Numbers Shown in Circles (1) (123)
 Assessor's Block Numbers Shown in Ellipses (1) (123)

CAD CONVERSION	09/08/2015	ARL
REVISION	DATE	TECH