

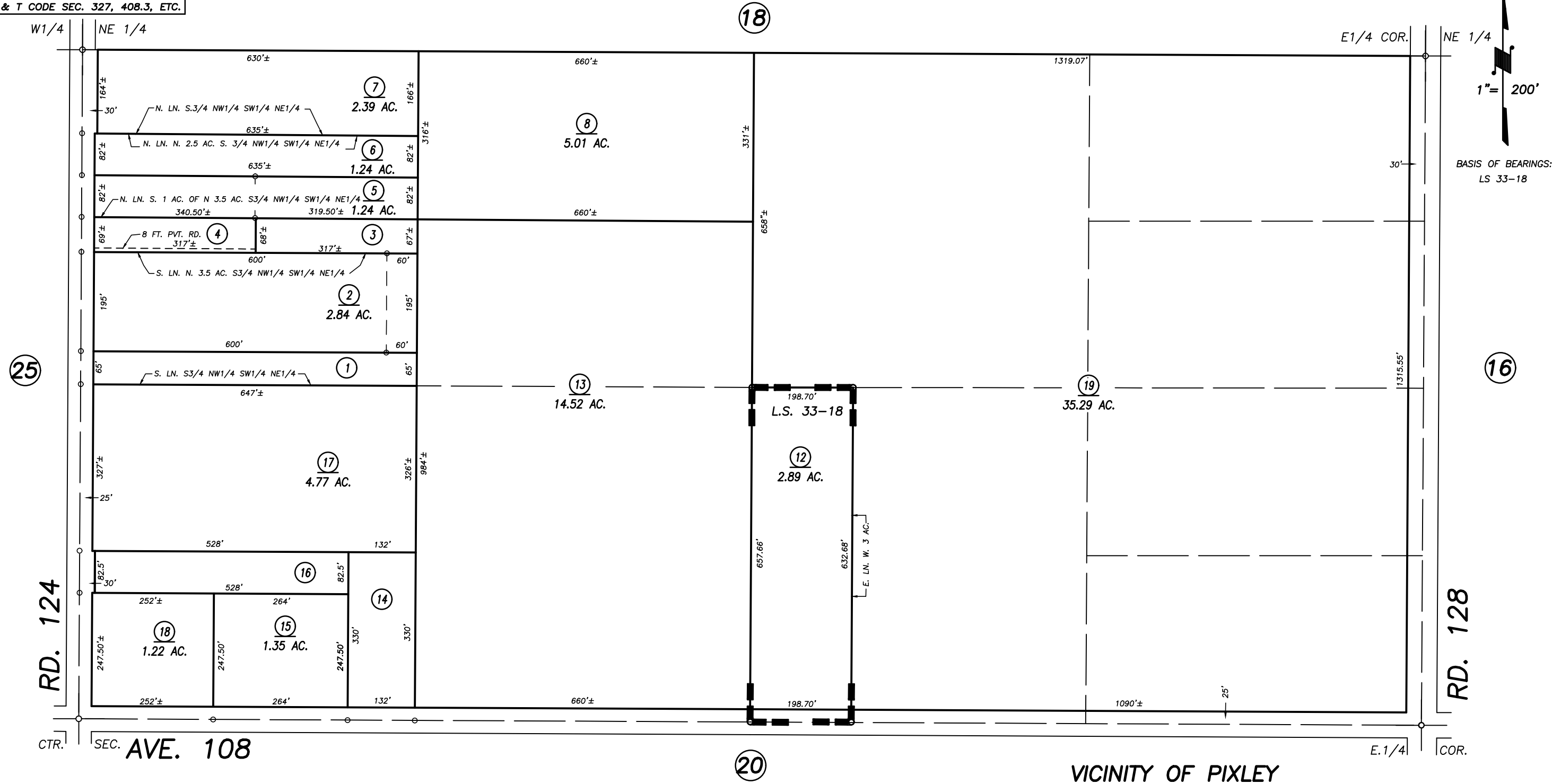
S1/2 OF NE1/4 SEC.29, T.22S., R.25E., M.D.B.&M.

Tax Area Codes 295-19

124-001

124-011

DISCLAIMER
 THIS MAP WAS PREPARED FOR LOCAL PROPERTY ASSESSMENT PURPOSES ONLY AND THE PARCELS SHOWN HEREON MAY NOT COMPLY WITH STATE AND LOCAL SUBDIVISION ORDINANCES, AND NO LIABILITY IS ASSUMED FOR THE USE OF THE INFORMATION SHOWN HEREON. R & T CODE SEC. 327, 408.3, ETC.



RECORD OF SURVEY, LS 33-18

VICINITY OF PIXLEY
 ASSESSOR'S MAPS BK. 295 , PG. 19
 COUNTY OF TULARE, CALIFORNIA, U.S.A.

NOTE: Assessor's Parcel Numbers Shown in Circles ① 123
 Assessor's Block Numbers Shown in Ellipses ① 123

RECORD OF SURVEY	09/08/2015	GL
REVISION	DATE	TECH