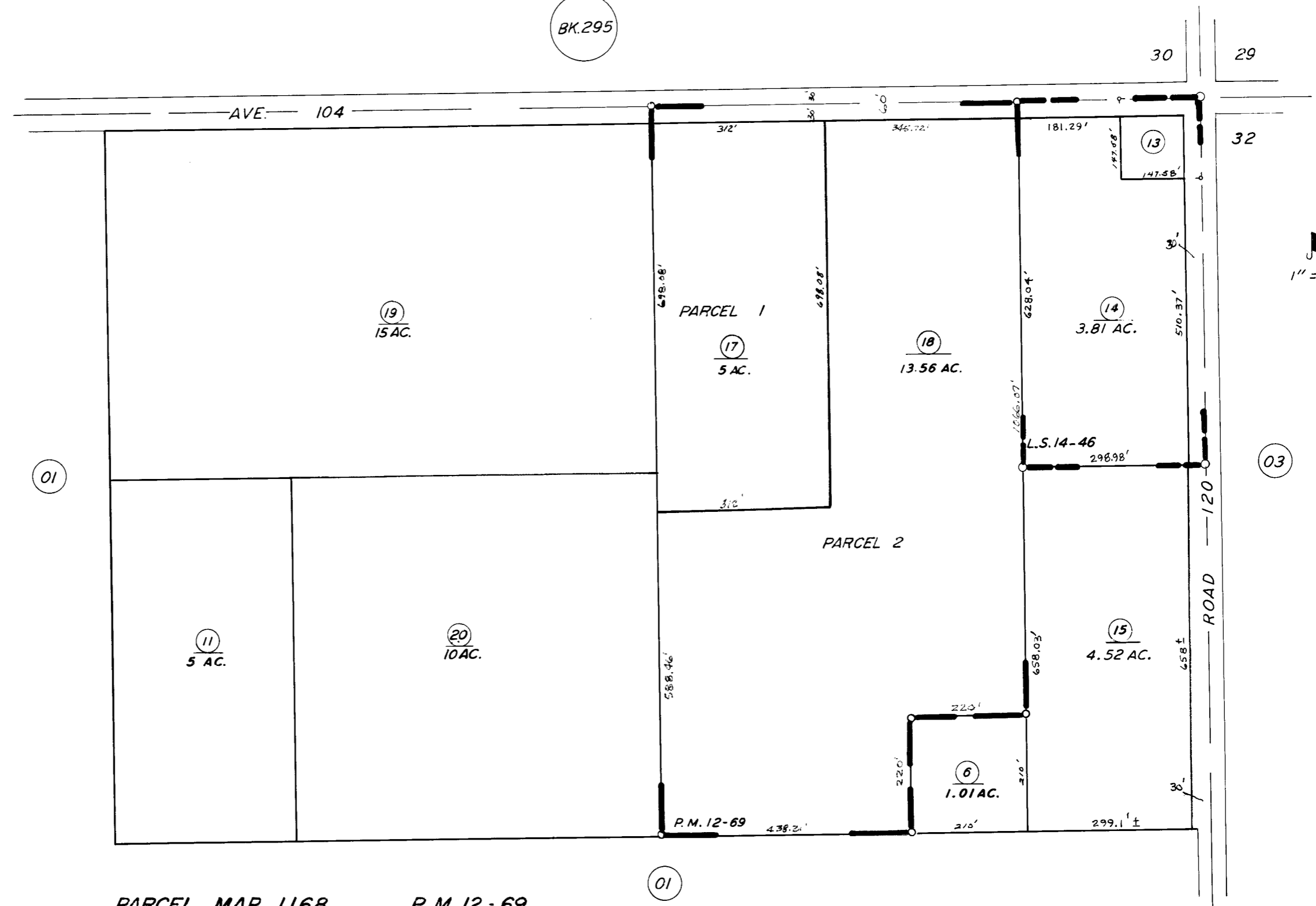


BK.295

N 1/4 COR.



PARCEL MAP 1168, P.M. 12-69
RECORD OF SURVEY, L.S. 14-46

ASSESSOR'S MAPS BK. 298, PG. 02.
COUNTY OF TULARE, CALIF.

NOTE -- ASSESSOR'S BLOCK NUMBERS SHOWN IN ELLIPSES
ASSESSOR'S PARCEL NUMBERS SHOWN IN CIRCLES

