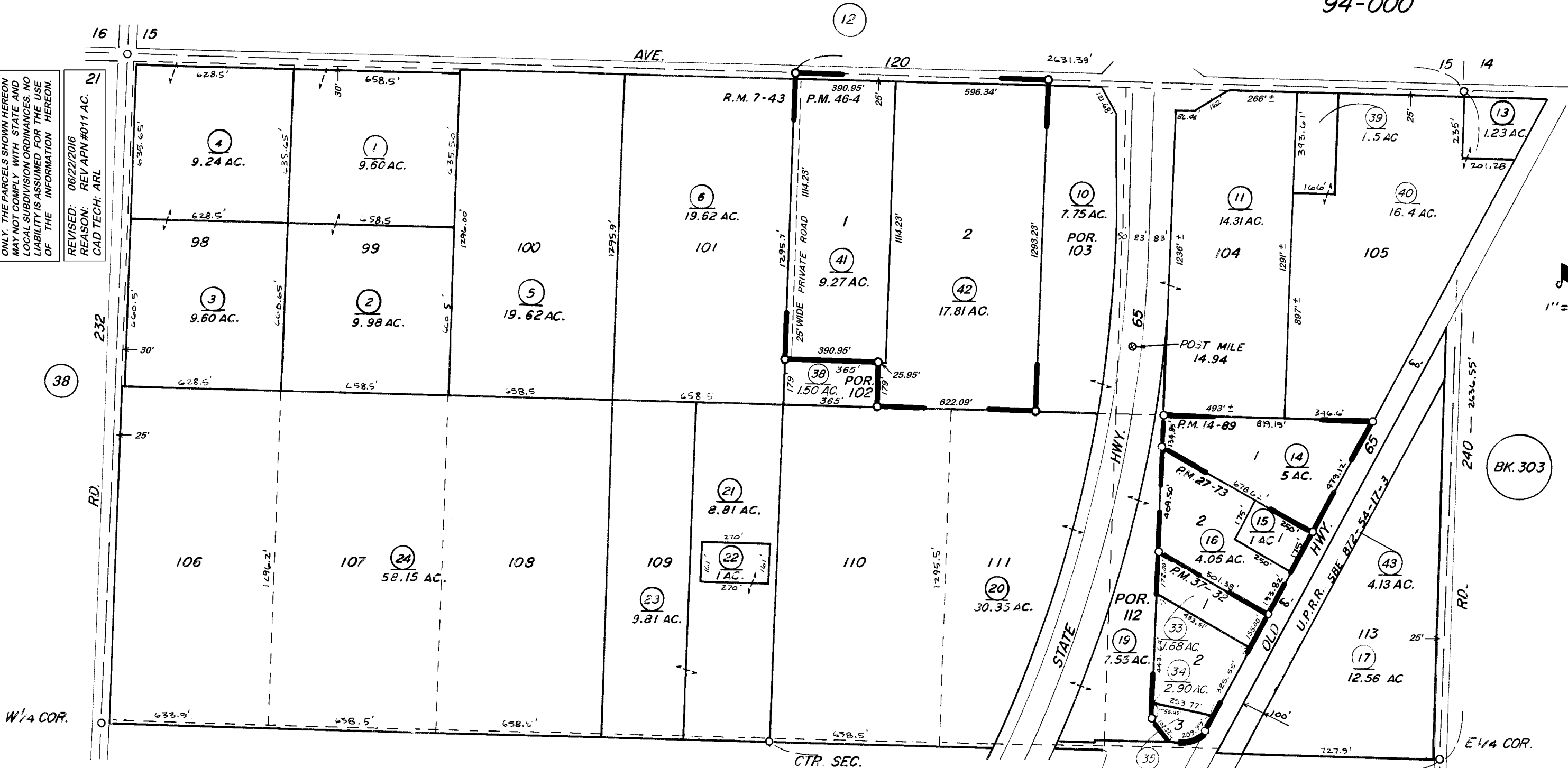


DISCLAIMER
THIS MAP WAS PREPARED FOR LOCAL PROPERTY ASSESSMENT PURPOSES ONLY. THE PARCELS SHOWN HEREON MAY NOT COMPLY WITH STATE AND LOCAL SUBDIVISION ORDINANCES. NO LIABILITY IS ASSUMED FOR THE USE OF THE INFORMATION HEREON.
REVISED: 06/22/2016
REASON: REV APN #011 AC.
CAD TECH: ARL



POR. CAMPO VERDE COLONY , R. M. 7-43
PARCEL MAP NO. 1388 , P.M. 14-89
PARCEL MAP NO. 2672 , P.M. 27-73
PARCEL MAP NO. 3629 , P.M. 37-32
PARCEL MAP NO. 4499 , P.M. 46-4
RECORD OF SURVEY, L.S. 26-26 (ST. HWY. 65)
RECORD OF SURVEY, L.S. 27-91 (ST. HWY. 65)

VICINITY OF PORTERVILLE
ASSESSOR'S MAPS BK. 302 , PG. 35
COUNTY OF TULARE, CALIF.

NOTE-ASSESSOR'S BLOCK NUMBERS SHOWN IN ELLIPSES
ASSESSOR'S PARCEL NUMBERS SHOWN IN CIRCLES