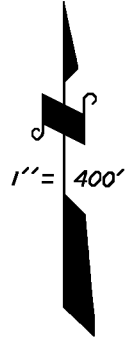
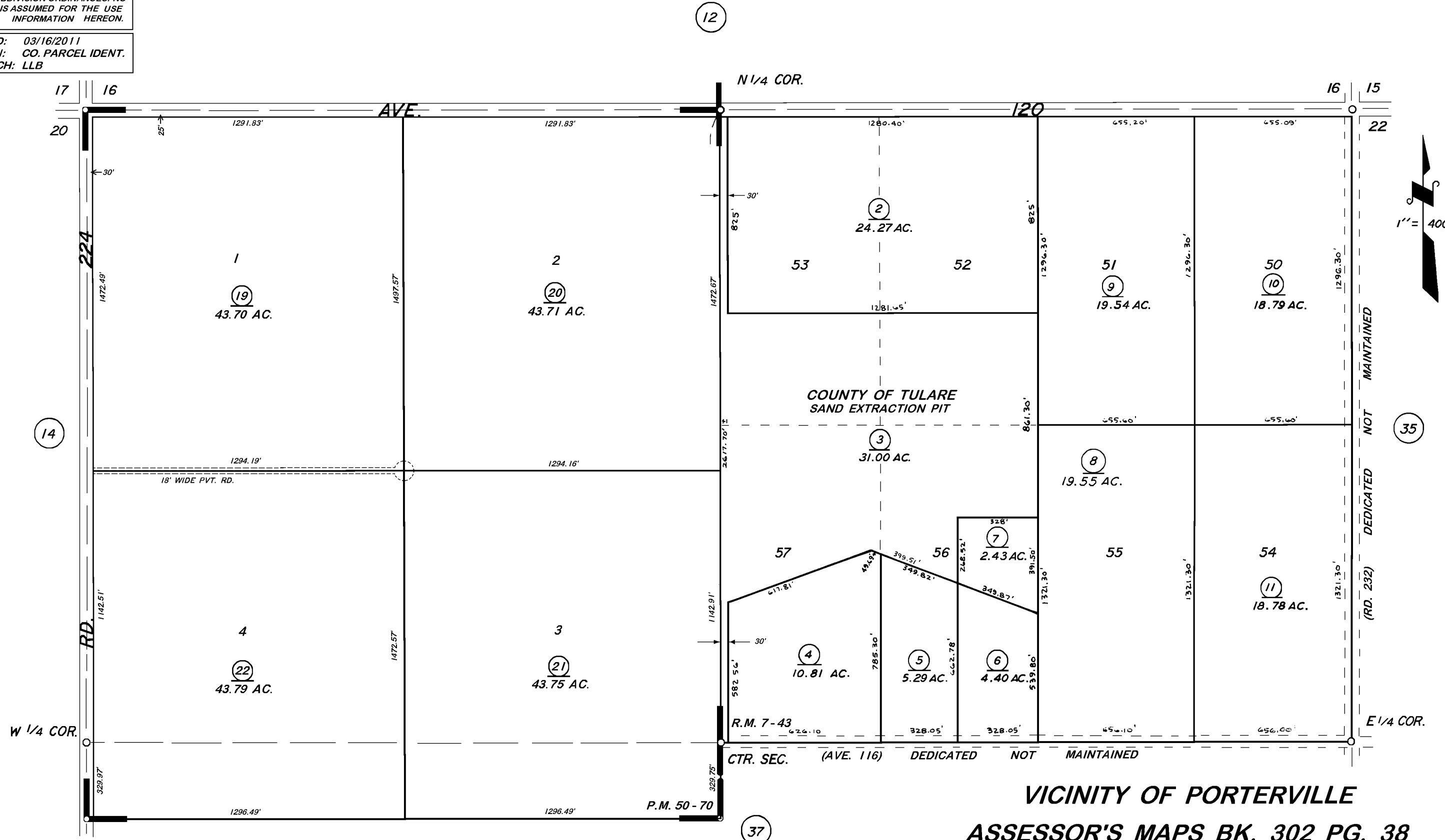


DISCLAIMER
THIS MAP WAS PREPARED FOR LOCAL PROPERTY ASSESSMENT PURPOSES ONLY. THE PARCELS SHOWN HEREON MAY NOT COMPLY WITH STATE AND LOCAL SUBDIVISION ORDINANCES. NO LIABILITY IS ASSUMED FOR THE USE OF THE INFORMATION HEREON.

REVISED: 03/16/2011
REASON: CO. PARCEL IDENT.
CAD TECH: LLB



POR. CAMPO VERDE COLONY, R.M. 7-43
PARCEL MAP NO. 4965, P.M. 50-70

VICINITY OF PORTERVILLE
ASSESSOR'S MAPS BK. 302 PG. 38
COUNTY OF TULARE, CALIF.

NOTE — ASSESSOR'S BLOCK NUMBERS SHOWN IN ELLIPSES
ASSESSOR'S PARCEL NUMBERS SHOWN IN CIRCLES