

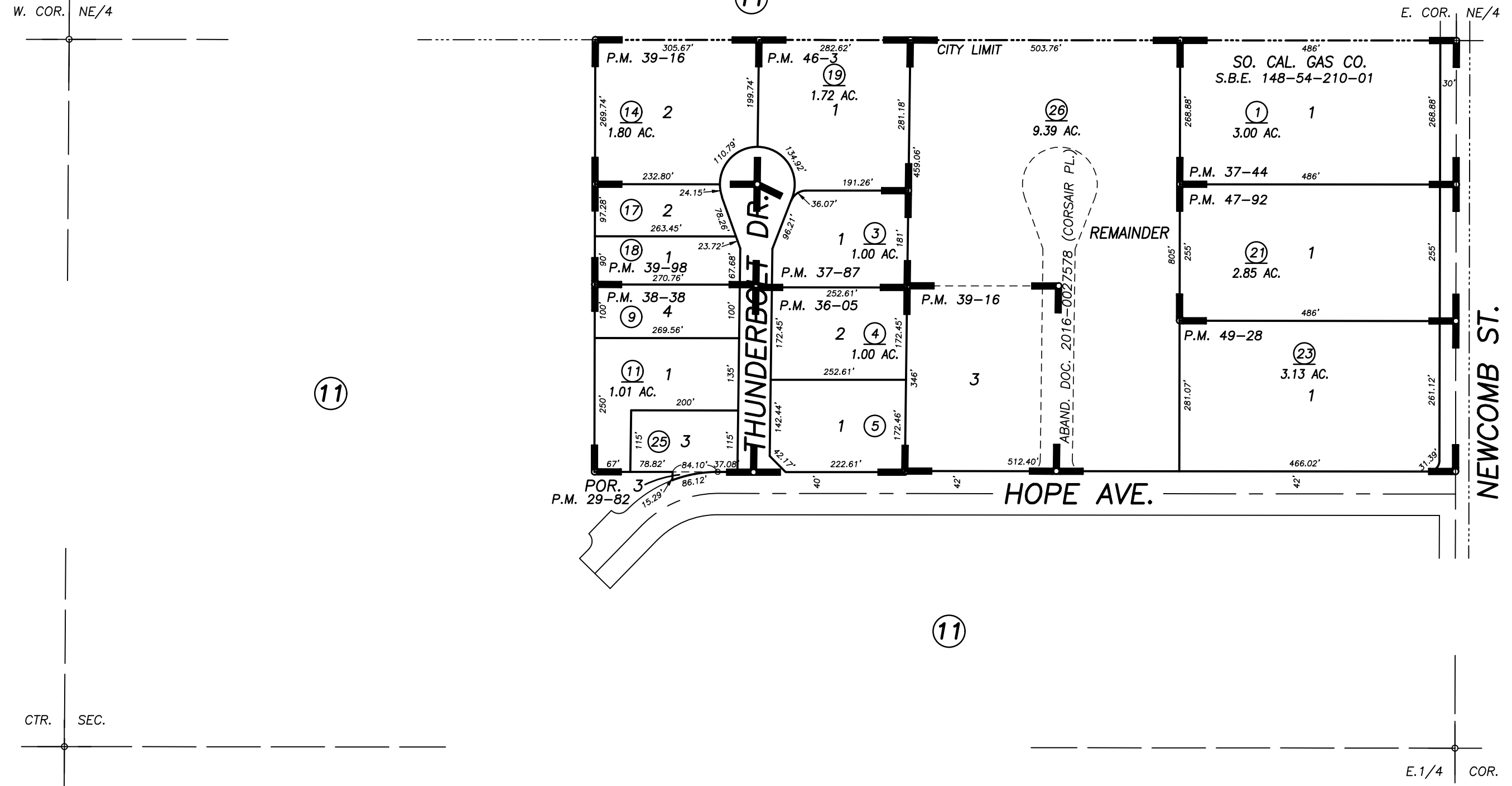
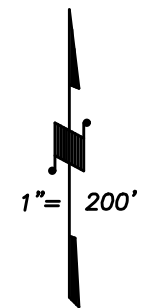
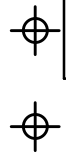
S1/2 OF NE/4 OF SEC.9, T.22S., R27E., M.D.B.&M.

Tax Area Codes 302-39

004-001

004-079

DISCLAIMER
THIS MAP WAS PREPARED FOR LOCAL PROPERTY ASSESSMENT PURPOSES ONLY AND THE PARCELS SHOWN HEREON MAY NOT COMPLY WITH STATE AND LOCAL SUBDIVISION ORDINANCES, AND NO LIABILITY IS ASSUMED FOR THE USE OF THE INFORMATION SHOWN HEREON. R & T CODE SEC. 327, 408.3, ETC.



Bk. 268

- POR. PARCEL MAP 2881, P.M. 29-82
- PARCEL MAP NO. 3503, P.M. 36-05
- PARCEL MAP NO. 3641, P.M. 37-44
- PARCEL MAP NO. 3684, P.M. 37-87
- PARCEL MAP NO. 3735, P.M. 38-38
- PARCEL MAP NO. 3813, P.M. 39-16
- PARCEL MAP NO. 3894, P.M. 39-98

- PARCEL MAP NO. 4498, P.M. 46-3
- PARCEL MAP NO. 4687, P.M. 47-92
- PARCEL MAP NO. 4823, P.M. 49-28

CITY OF PORTERVILLE
ASSESSOR'S MAPS BK. 302 , PG. 39
COUNTY OF TULARE, CALIFORNIA, U.S.A.

NOTE: Assessor's Parcel Numbers Shown in Circles (1) (123)
Assessor's Block Numbers Shown in Ellipses

2016-0051080	11/23/2016	NFL
REVISION	DATE	TECH