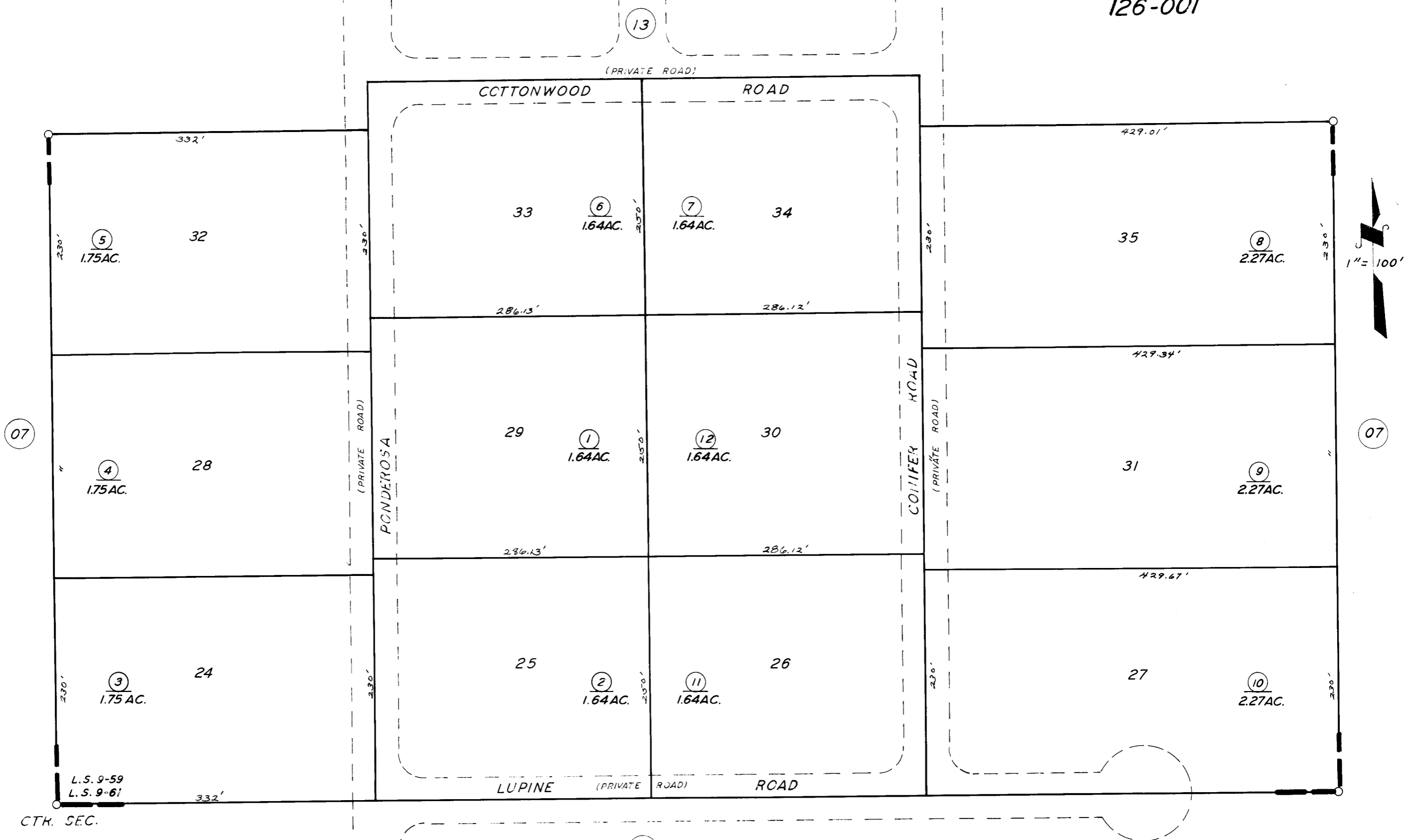


S'LY. POR. SW 1/4 OF NE 1/4 SEC. 17, T.22S., R.36E., M.D.B. & M.

TAX CODE AREA 310-12  
126-001



L.S. 9-59  
 L.S. 9-61  
 CTR. SEC.  
 POR. RECORD OF SURVEY, L.S. 9-59  
 POR. RECORD OF SURVEY, L.S. 9-61

ASSESSOR'S MAPS BK. 310, PG. 12.  
 COUNTY OF TULARE, CALIF.

NOTE -- ASSESSOR'S BLOCK NUMBERS SHOWN IN ELLIPSES  
 ASSESSOR'S PARCEL NUMBERS SHOWN IN CIRCLES