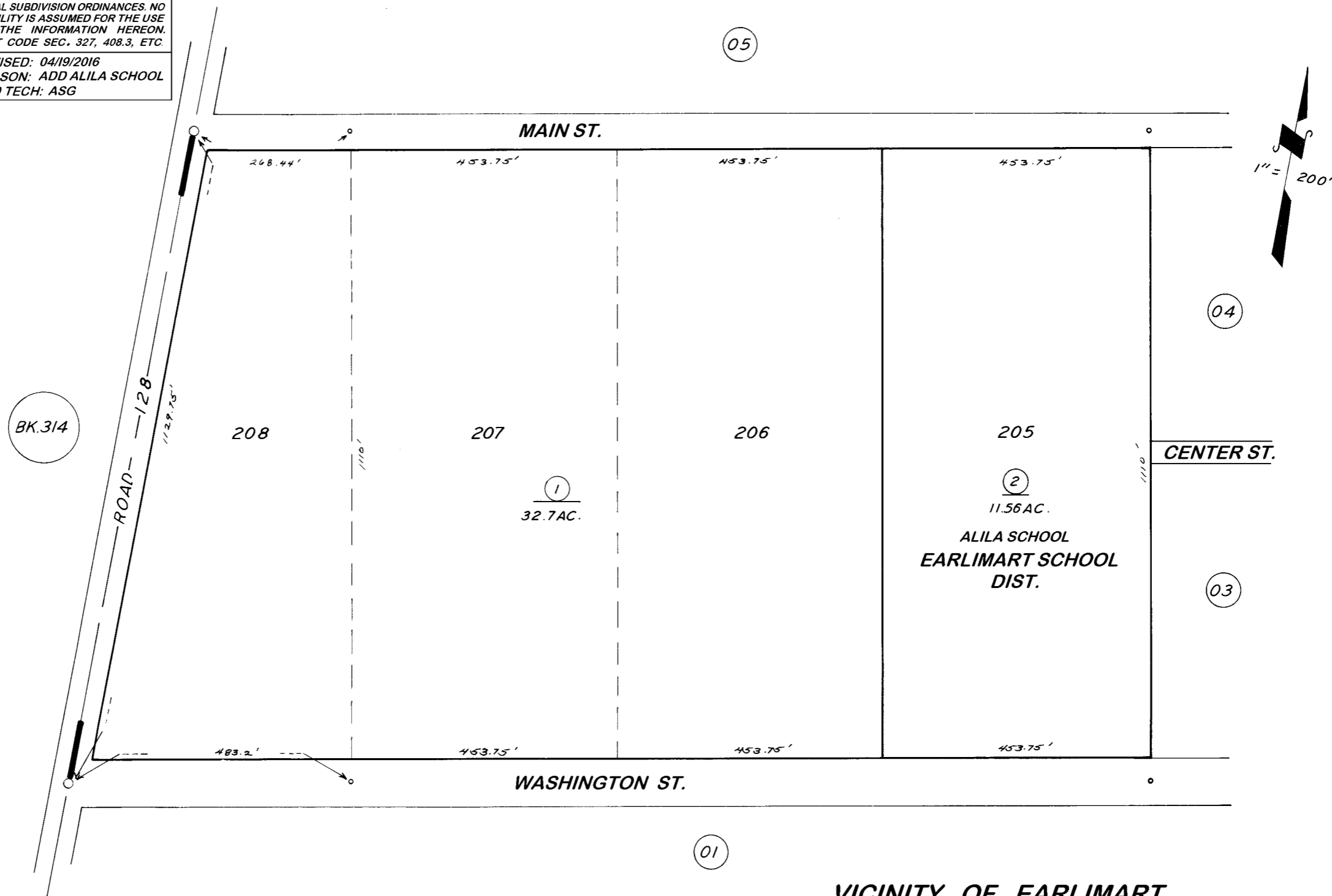


075-003
075-012
075-014

DISCLAIMER
THIS MAP WAS PREPARED FOR LOCAL PROPERTY ASSESSMENT PURPOSES ONLY. THE PARCELS SHOWN HEREON MAY NOT COMPLY WITH STATE AND LOCAL SUBDIVISION ORDINANCES. NO LIABILITY IS ASSUMED FOR THE USE OF THE INFORMATION HEREON. R & T CODE SEC. 327, 408.3, ETC.
REVISED: 04/19/2016
REASON: ADD ALILA SCHOOL
CAD TECH: ASG



VICINITY OF EARLIMART

ASSESSOR'S MAPS BK. 315, PG. 02.

POR. EARLIMART FRUIT & ALFALFA COL. NO. 1 R.M. 10-41

COUNTY OF TULARE, CALIF.

NOTE — ASSESSOR'S BLOCK NUMBERS SHOWN IN ELLIPSES
ASSESSOR'S PARCEL NUMBERS SHOWN IN CIRCLES

