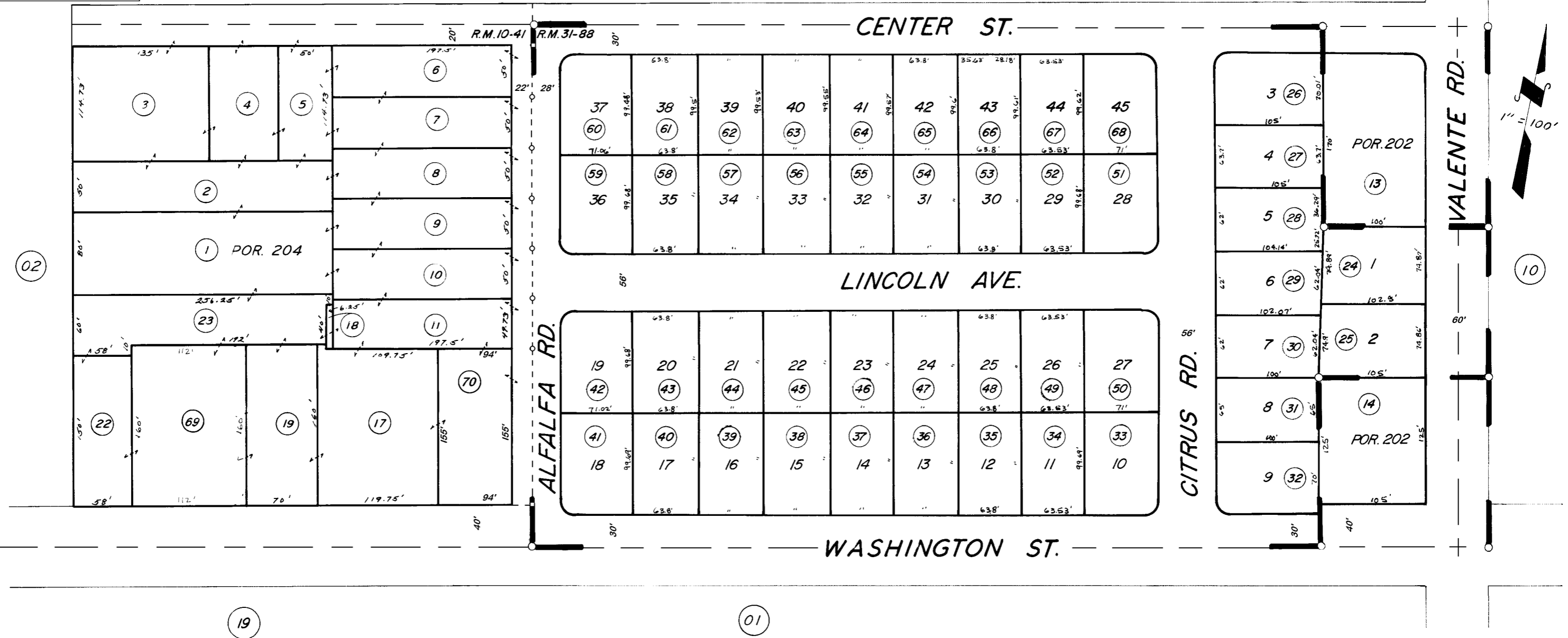


DISCLAIMER

THIS MAP WAS PREPARED FOR LOCAL PROPERTY ASSESSMENT PURPOSES ONLY. THE PARCELS SHOWN HEREON MAY NOT COMPLY WITH STATE AND LOCAL SUBDIVISION ORDINANCES. NO LIABILITY IS ASSUMED FOR THE USE OF THE INFORMATION HEREON. R & T CODE SEC. 327, 408.3, ETC.

REVISED: 04/19/2016
REASON: APN 15 & 16 COMBINE
CAD TECH: ASG

04



VICINITY OF EARLIMART

ASSESSOR'S MAPS BK. 315, PG. 03.

COUNTY OF TULARE, CALIF.

RAILROAD WEST TR. NO. 612 R.M. 31-88
POR. EARLIMART FRUIT & ALFALFA COL. NO. 1

R.M. 10-41.

NOTE - ASSESSOR'S BLOCK NUMBERS SHOWN IN ELLIPSES
ASSESSOR'S PARCEL NUMBERS SHOWN IN CIRCLES

