

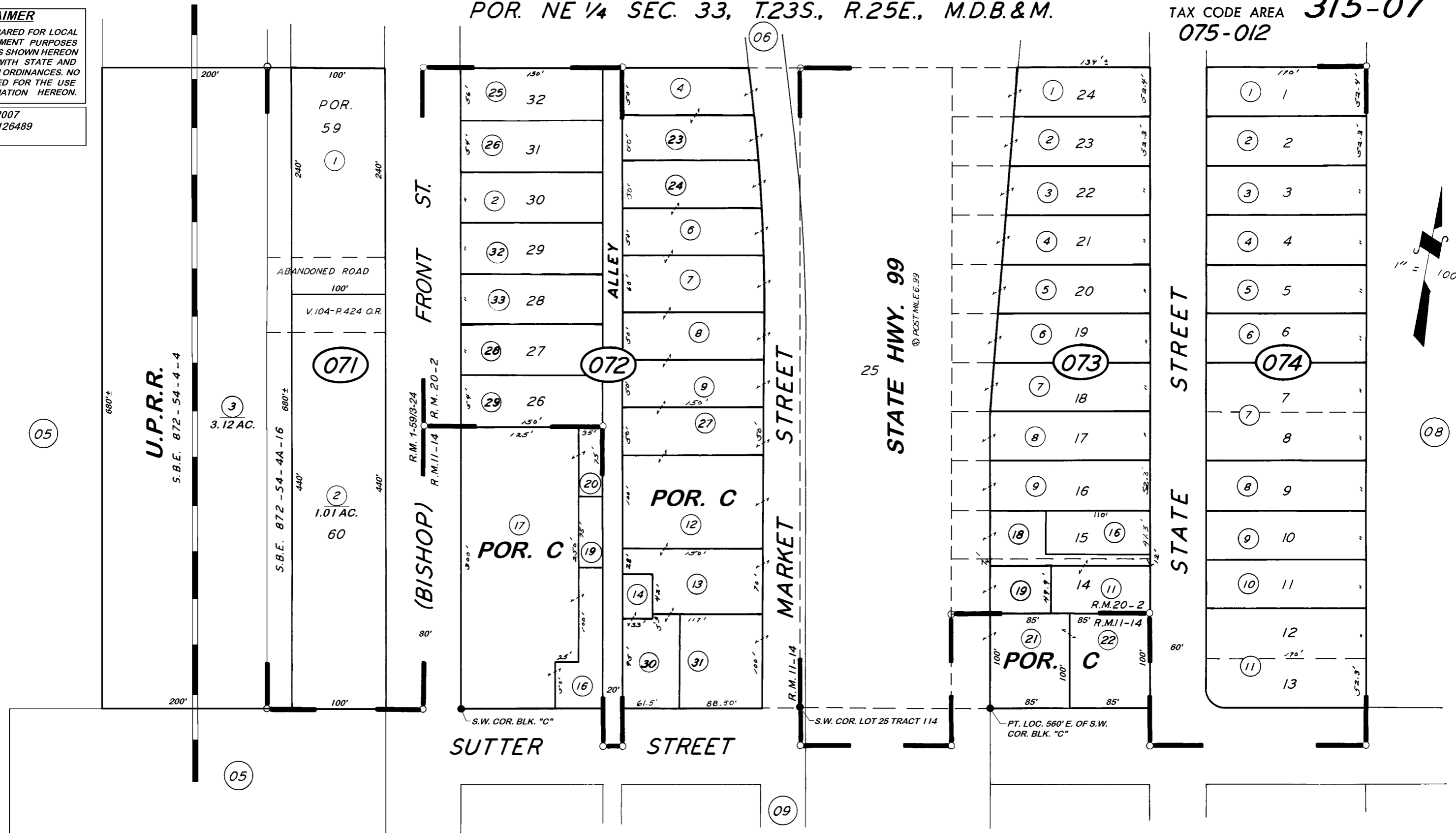
DISCLAIMER

THIS MAP WAS PREPARED FOR LOCAL PROPERTY ASSESSMENT PURPOSES ONLY. THE PARCELS SHOWN HEREON MAY NOT COMPLY WITH STATE AND LOCAL SUBDIVISION ORDINANCES. NO LIABILITY IS ASSUMED FOR THE USE OF THE INFORMATION HEREON.

REVISED: 10/02/2007
REASON: 2004-0126489
CAD TECH: PHN

POR. NE 1/4 SEC. 33, T.23S., R.25E., M.D.B.&M.

TAX CODE AREA **315-07**
075-012



POR. ALILA, R.M. 1-59, 3-24
POR. EARLIMART & EARLIMART FRUIT & ALFALFA COL. NO. 2 & 3, R.M. 11-14
TRACT NO. 114, R.M. 20-2

VICINITY OF EARLIMART
ASSESSOR'S MAPS BK. 315, PG. 07
COUNTY OF TULARE, CALIF.

NOTE — ASSESSOR'S BLOCK NUMBERS SHOWN IN ELLIPSES
ASSESSOR'S PARCEL NUMBERS SHOWN IN CIRCLES

