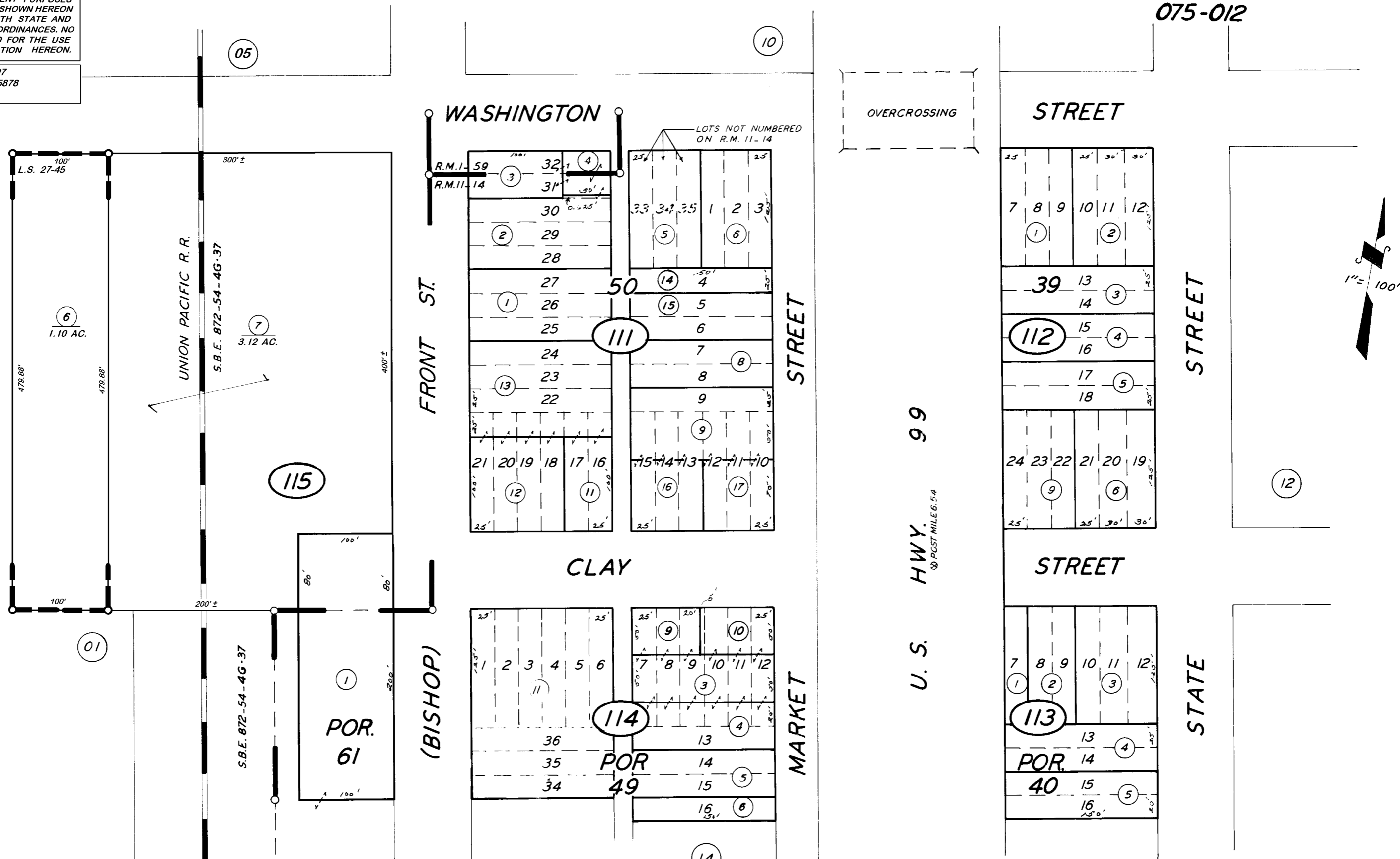


DISCLAIMER
 THIS MAP WAS PREPARED FOR LOCAL PROPERTY ASSESSMENT PURPOSES ONLY. THE PARCELS SHOWN HEREON MAY NOT COMPLY WITH STATE AND LOCAL SUBDIVISION ORDINANCES. NO LIABILITY IS ASSUMED FOR THE USE OF THE INFORMATION HEREON.

REVISED: 08/27/2007
 REASON: 2005-0035878
 CAD TECH: JLC

N'LY. POR. SE 1/4 SEC. 33, T.23S., R.25E., M.D.B.&M.

TAX CODE AREA **315-11**
075-012



POR. ALILA R.M. 1-59
 POR. EARLIMART & EARLIMART FRUIT & ALFALFA COL. NO. 2&3 R.M. 11-14
 POR. RECORD OF SURVEY L.S. 27-45

ASSESSOR'S MAPS BK. 315, PG. 11

COUNTY OF TULARE, CALIF.

NOTE - ASSESSOR'S BLOCK NUMBERS SHOWN IN ELLIPSES
 ASSESSOR'S PARCEL NUMBERS SHOWN IN CIRCLES