

DISCLAIMER

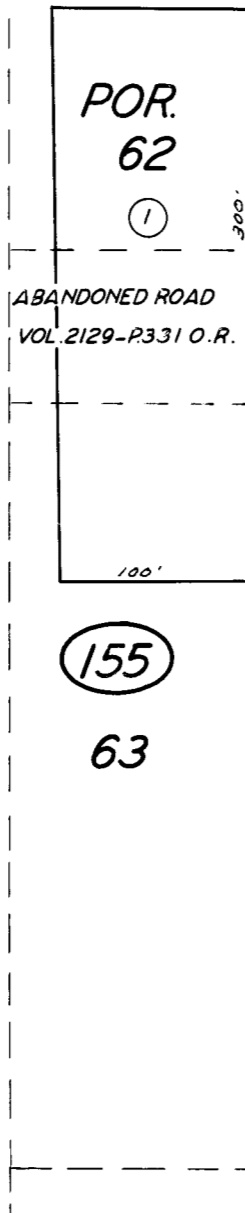
THIS MAP WAS PREPARED FOR LOCAL PROPERTY ASSESSMENT PURPOSES ONLY. THE PARCELS SHOWN HEREON MAY NOT COMPLY WITH STATE AND LOCAL SUBDIVISION ORDINANCES. NO LIABILITY IS ASSUMED FOR THE USE OF THE INFORMATION HEREON. R & T CODE SEC. 327, 408.3, ETC.

REVISED: 5/18/2020
REASON: 2001-0030899
CAD TECH: NFL

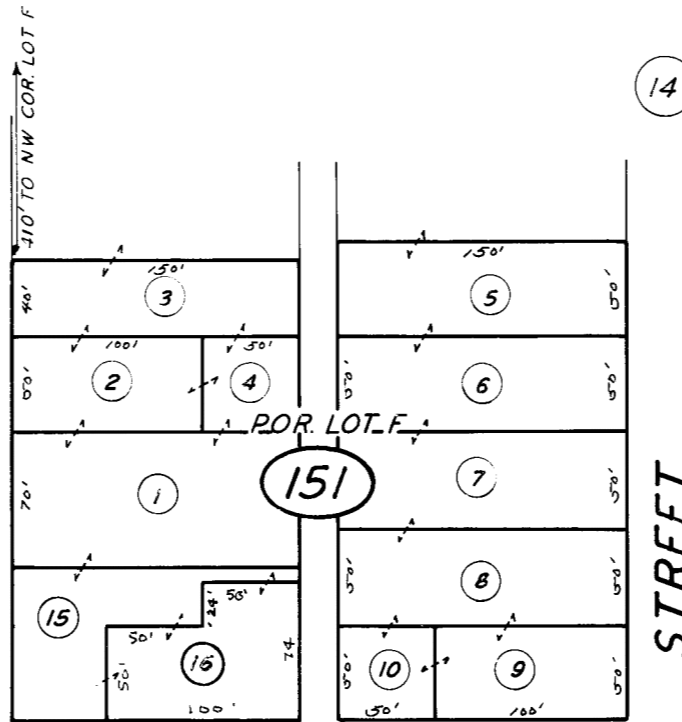
01

SOUTHERN PACIFIC R. R.

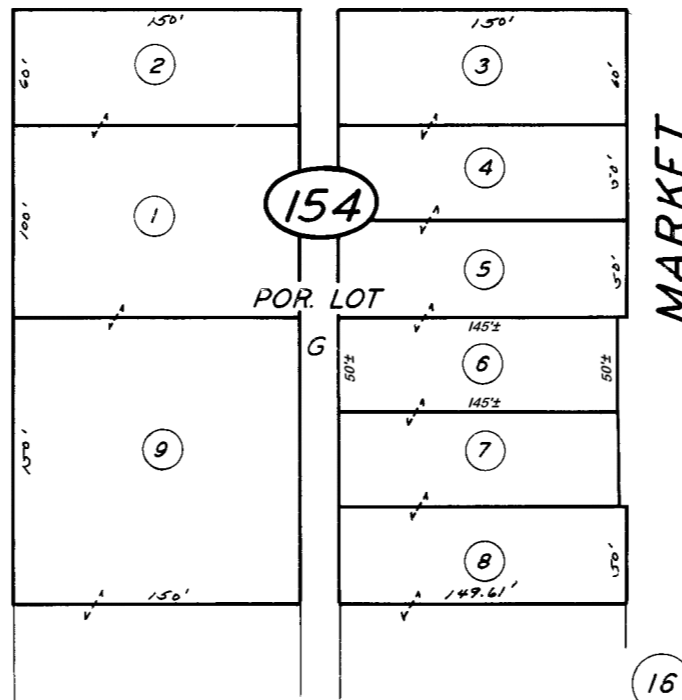
S.B.E. 872-54-4G-37



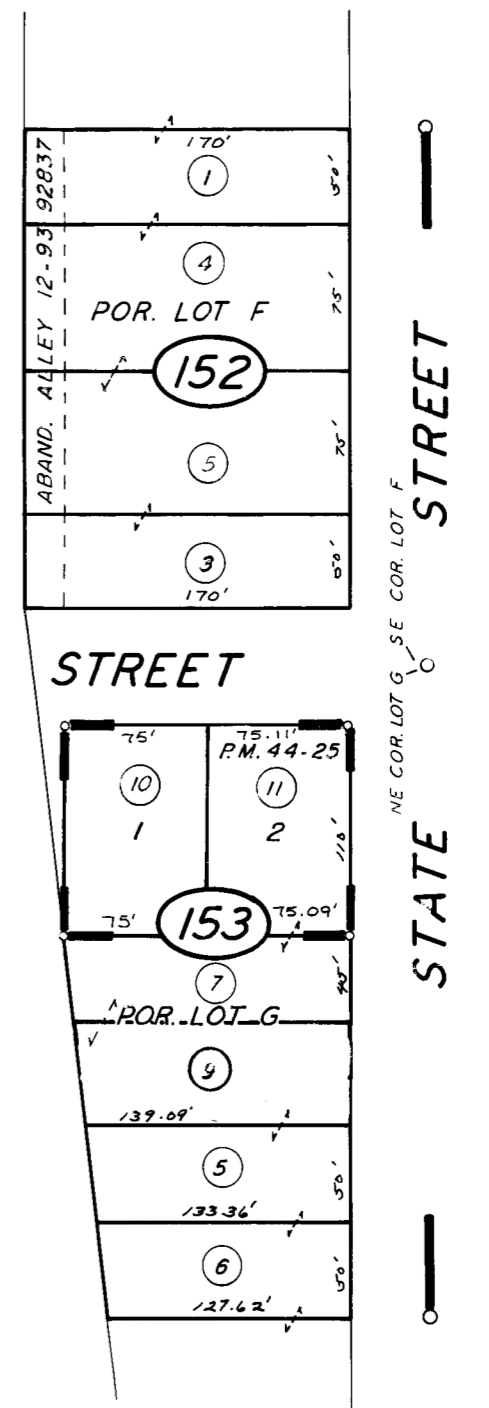
FRONT ST.
(BISHOP DR.)



SW COR. LOT F
NW COR. LOT G
WILSON

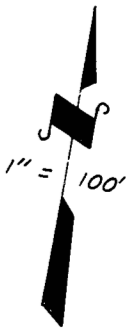


U. S. HWY. 99
0.15 MILE 6.93



NE COR. LOT G SE COR. LOT F

STATE STREET



VICINITY OF EARLIMART

POR. EARLIMART & EARLIMART FRUIT & ALFALFA COL. NO. 2&3 R.M.11-14. ASSESSOR'S MAPS BK. 315, PG. 15 .
PARCEL MAP 4321 P.M.44-25

COUNTY OF TULARE, CALIF.

NOTE -- ASSESSOR'S BLOCK NUMBERS SHOWN IN ELLIPSES
ASSESSOR'S PARCEL NUMBERS SHOWN IN CIRCLES

