

DISCLAIMER
 THIS MAP WAS PREPARED FOR LOCAL PROPERTY ASSESSMENT PURPOSES ONLY AND THE PARCELS SHOWN HEREON MAY NOT COMPLY WITH STATE AND LOCAL SUBDIVISION ORDINANCES, AND NO LIABILITY IS ASSUMED FOR THE USE OF THE INFORMATION SHOWN HEREON.

S1/2 OF NW1/4 OF NE1/4 SEC. 3, T.23S., R.27E., M.D.B.&M.

Tax Area Codes 320-16

144-002

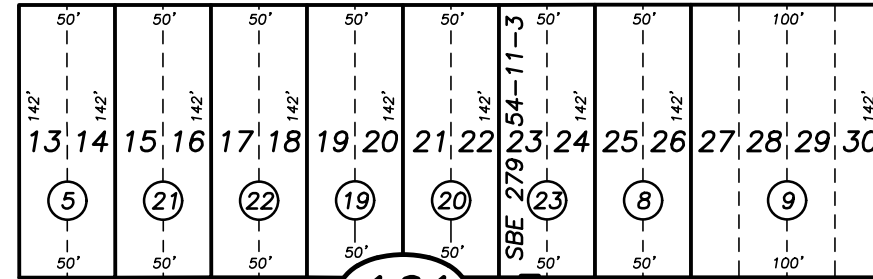
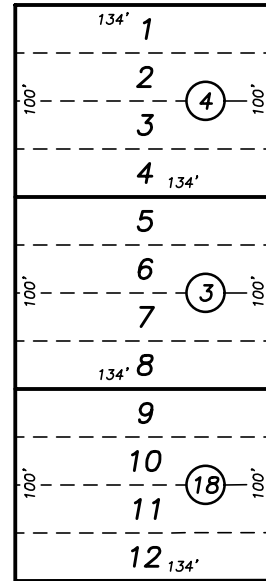
17

TERRA BELLA BLVD.

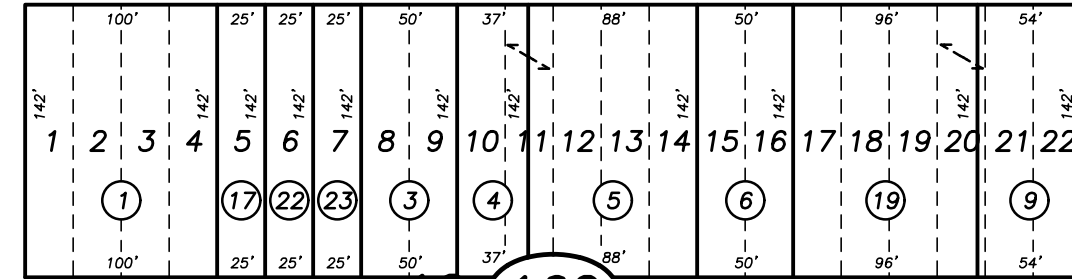
100'

AVE. 95

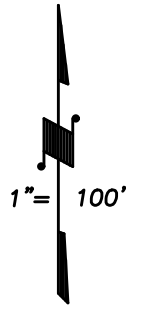
RD. 236



ST. SECOND



ST. THIRD

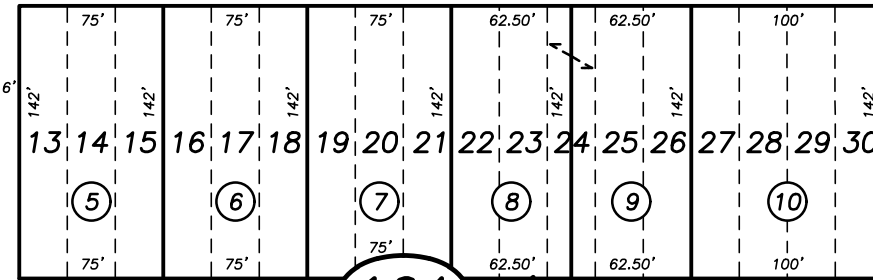
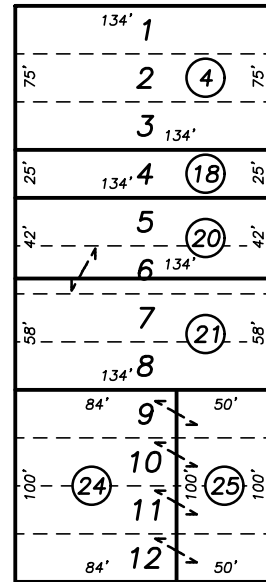


161

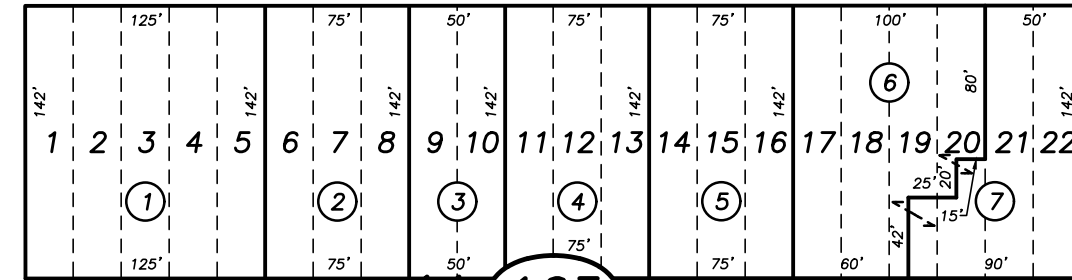
162

65

OLD STATE HWY.



RD. 237



RD. 238

18

MAGNOLIA

AVE.

164

163

ACACIA AVE.

AVE. 94

POR. TERRA BELLA, R.M. 8-10

15

CITY OF TERRA BELLA
 ASSESSOR'S MAPS BK. 320 , PG. 16
 COUNTY OF TULARE, STATE OF CALIFORNIA, U.S.A.

NOTE: Assessor's Parcel Numbers Shown in Circles 123
 Assessor's Block Numbers Shown in Elipses

2001-0042822	02/19/2003	PHN
REVISION	DATE	TECH