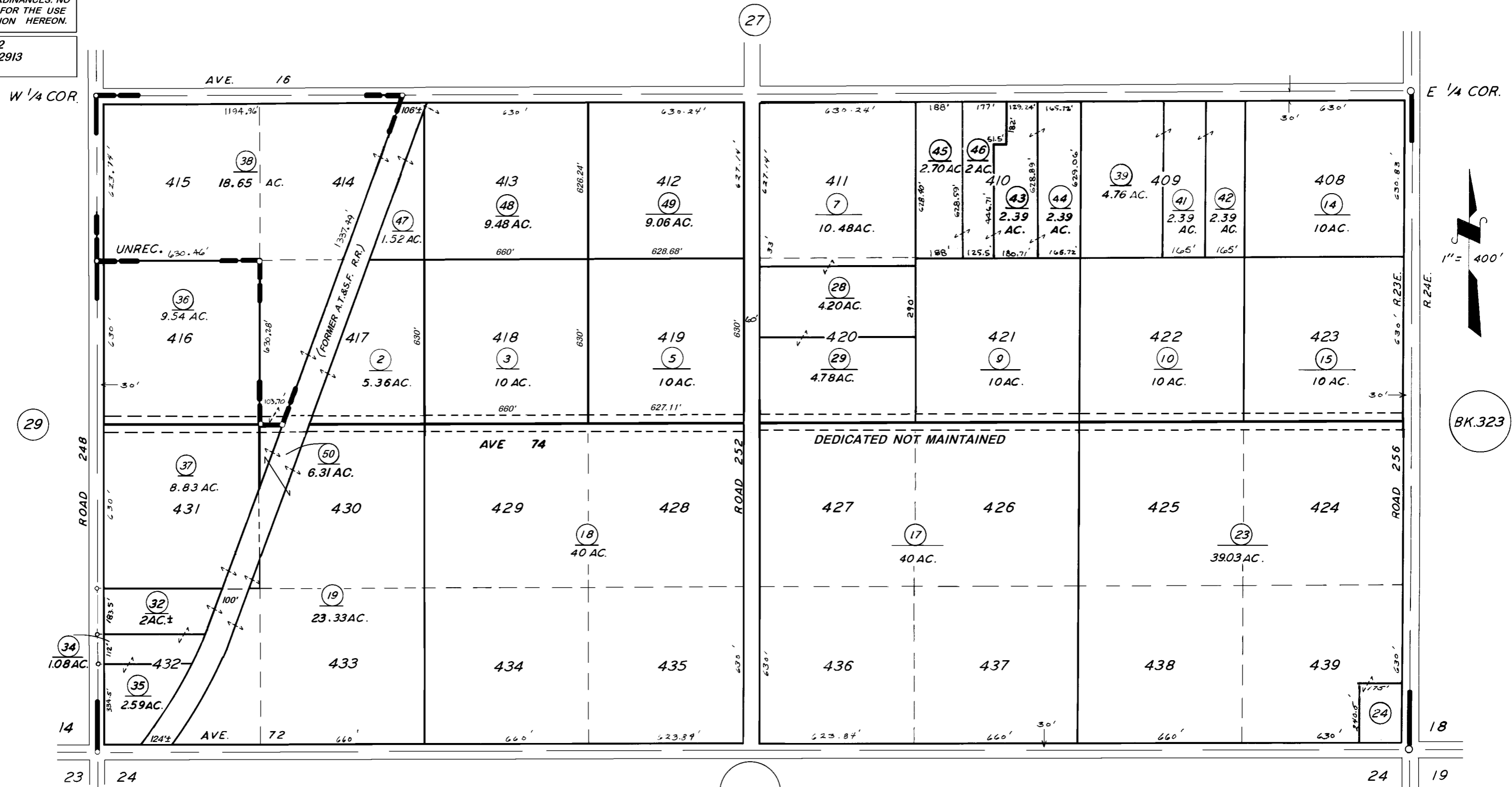


**DISCLAIMER**

THIS MAP WAS PREPARED FOR LOCAL PROPERTY ASSESSMENT PURPOSES ONLY. THE PARCELS SHOWN HEREON MAY NOT COMPLY WITH STATE AND LOCAL SUBDIVISION ORDINANCES. NO LIABILITY IS ASSUMED FOR THE USE OF THE INFORMATION HEREON.

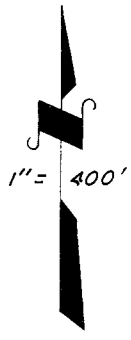
REVISED: 09/13/2012  
REASON: 2010-0082913  
CAD TECH: ASG



CENTRAL LEASE, INC. SURVEY, UNREC.  
POR. TERRA BELLA LANDS NO. 9, R.M. 9-27.

VICINITY OF TERRA BELLA  
ASSESSOR'S MAPS BK. 320, PG. 28.  
COUNTY OF TULARE, CALIF.

NOTE -- ASSESSOR'S BLOCK NUMBERS SHOWN IN ELLIPSES  
ASSESSOR'S PARCEL NUMBERS SHOWN IN CIRCLES



BK.323

BK.321

