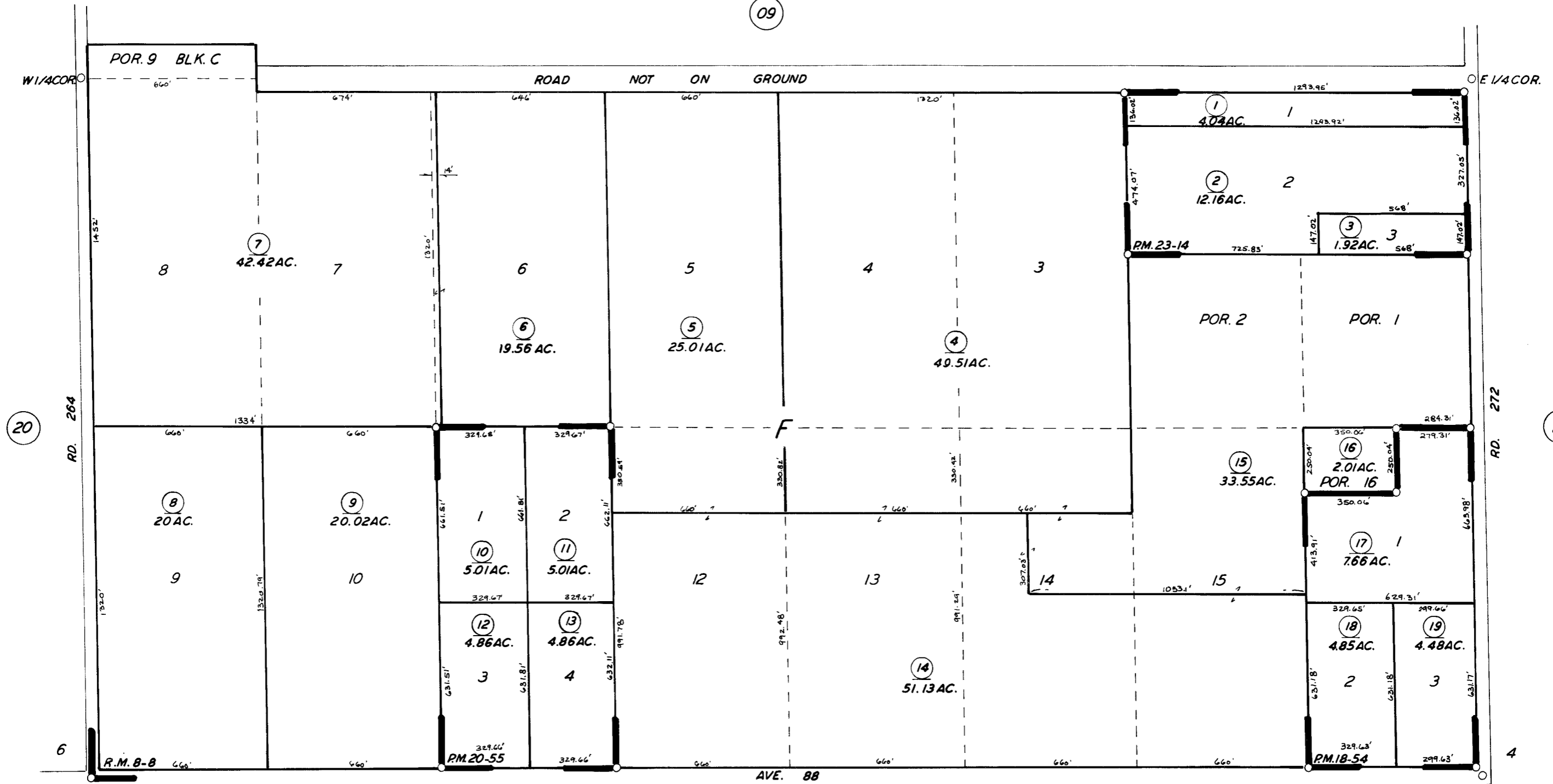


09



POR. GRAND VIEW HEIGHTS COL. R.M. 8-8
 PARCEL MAP 1753, P.M. 18-54
 PARCEL MAP 1954 P.M. 20-55
 PARCEL MAP 2213, P.M. 23-14

23

NOTE—ASSESSOR'S BLOCK NUMBERS SHOWN IN ELLIPSES
 ASSESSOR'S PARCEL NUMBERS SHOWN IN CIRCLES