

DISCLAIMER
 THIS MAP WAS PREPARED FOR LOCAL PROPERTY ASSESSMENT PURPOSES ONLY AND THE PARCELS SHOWN HEREON MAY NOT COMPLY WITH STATE AND LOCAL SUBDIVISION ORDINANCES, AND NO LIABILITY IS ASSUMED FOR THE USE OF THE INFORMATION SHOWN HEREON.

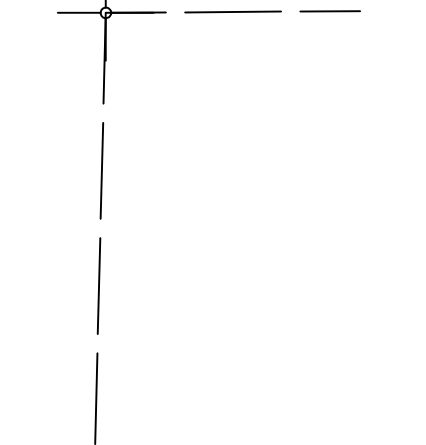
N1/2 OF SW1/4 SEC.14,

T.24 S., R.31 E., M.D.B.&M.

Tax Area Code
 111-001

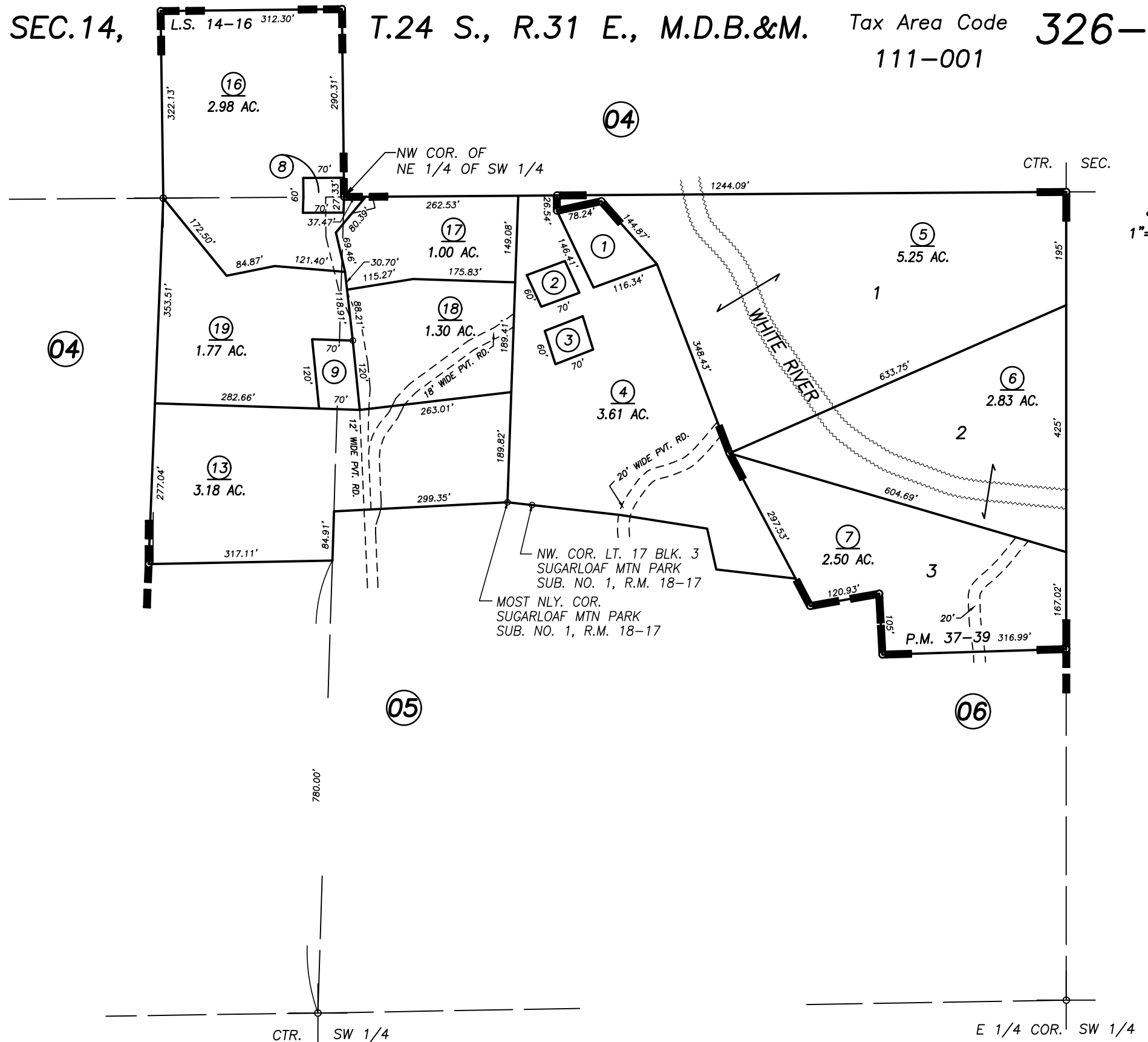
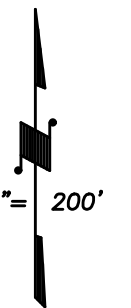
326-11

W.1/4 COR.



W 1/4 COR. SW 1/4

CTR. SEC.



CTR. SW 1/4

E 1/4 COR. SW 1/4

POR. RECORD OF SURVEY, L.S. 9-64 (W1/2 SEC. 14, ETC.)
 POR. RECORD OF SURVEY, L.S. 14-16
 POR. PARCEL MAP 3636, P.M. 37-39

VICINITY OF SUGARLOAF MOUNTAIN PARK
 ASSESSOR'S MAPS BK. 326 , PG.11
 COUNTY OF TULARE, CALIFORNIA, U.S.A.

NOTE: Assessor's Parcel Numbers Shown in Circles (1) (123)
 Assessor's Block Numbers Shown in Ellipses

2010-0054965	12/02/2010	LLB
REVISION	DATE	TECH