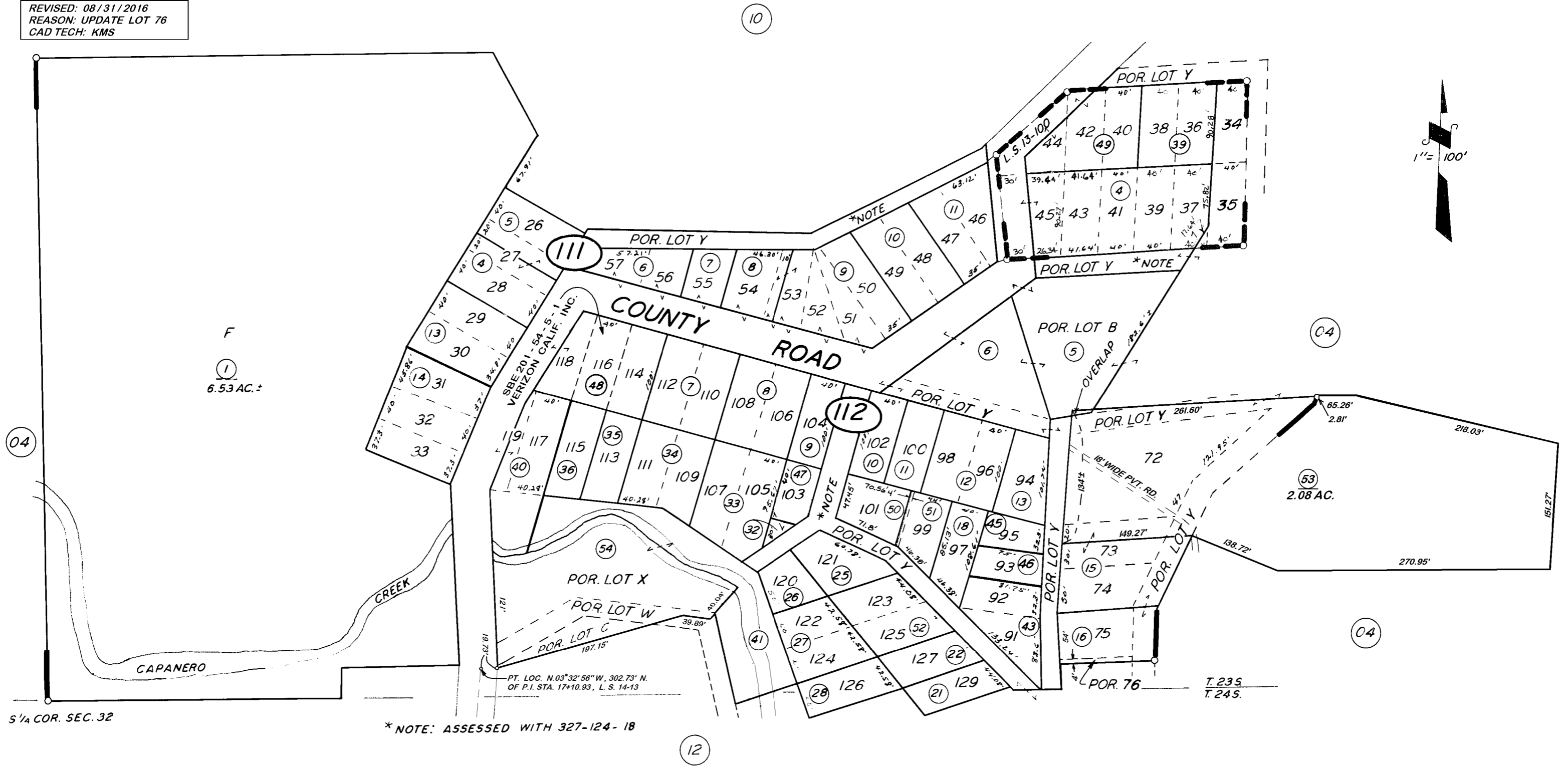


**DISCLAIMER**  
 THIS MAP WAS PREPARED FOR LOCAL PROPERTY ASSESSMENT PURPOSES ONLY. THE PARCELS SHOWN HEREON MAY NOT COMPLY WITH STATE AND LOCAL SUBDIVISION ORDINANCES. NO LIABILITY IS ASSUMED FOR THE USE OF THE INFORMATION HEREON. R & T CODE SEC. 327, 408.3, ETC.  
 REVISED: 08/31/2016  
 REASON: UPDATE LOT 76  
 CAD TECH: KMS

POR. SE 1/4 SEC. 32 T. 23 S., R. 31 E. & POR. NE 1/4 SEC. 5 T. 24 S., R. 31 E., M.D.B. & M.

TAX CODE AREA  
 095-001

327-11



POR. PINE FLAT, R.M. 17-14  
 RECORD OF SURVEY, L.S. 13-100

VICINITY OF CALIFORNIA HOT SPRINGS  
 ASSESSOR'S MAPS BK. 327, PG. 11 .  
 COUNTY OF TULARE, CALIF.

NOTE — ASSESSOR'S BLOCK NUMBERS SHOWN IN ELLIPSES ○ ○  
 ASSESSOR'S PARCEL NUMBERS SHOWN IN CIRCLES ○ ○