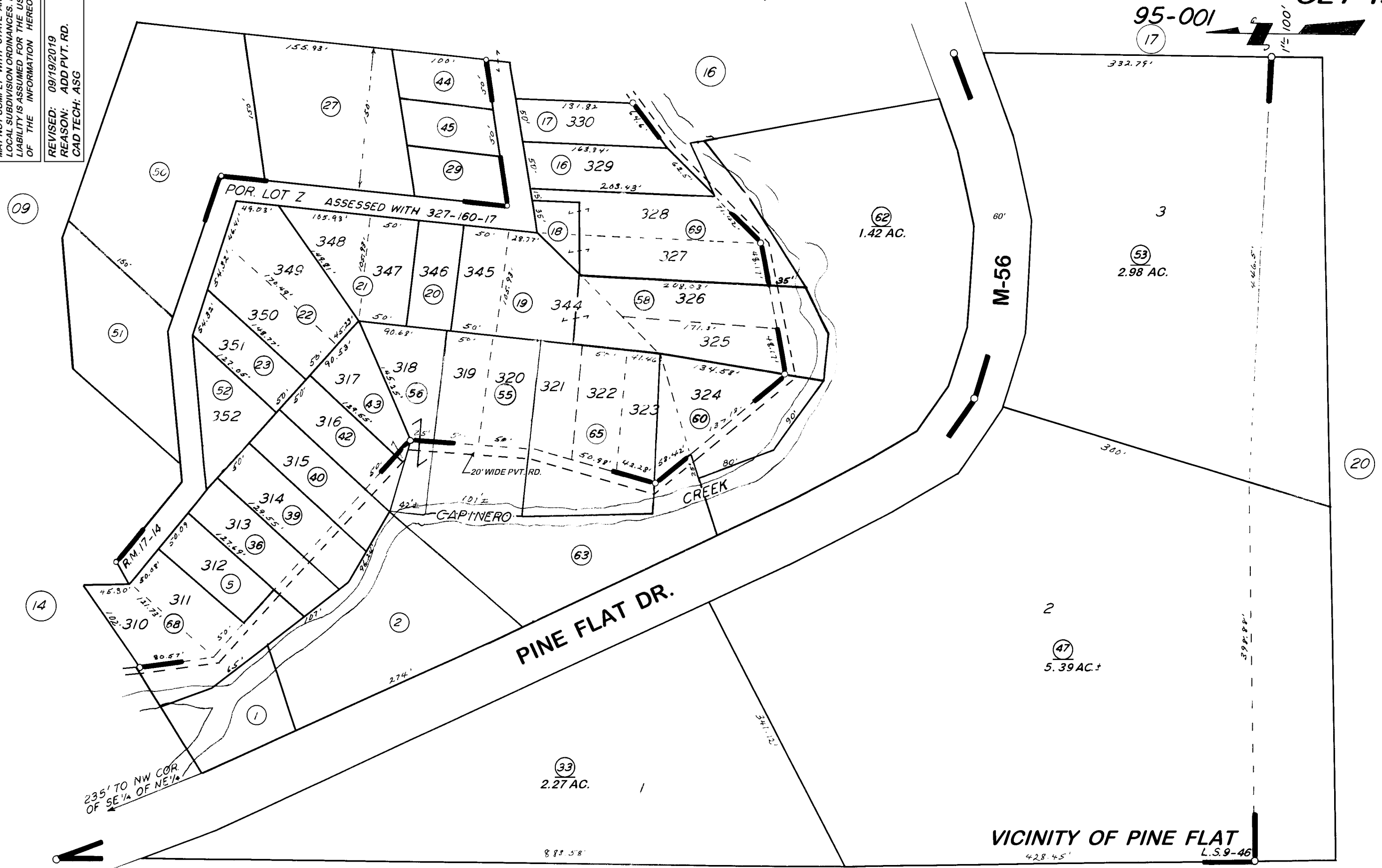


POR. NE 1/4 SEC. 5, T.24S., R.31E., M.D.B.&M.

TAX CODE AREA 327-15
95-001
17

DISCLAIMER
THIS MAP WAS PREPARED FOR LOCAL PROPERTY ASSESSMENT PURPOSES ONLY. THE PARCELS SHOWN HEREON MAY NOT COMPLY WITH STATE AND LOCAL SUBDIVISION ORDINANCES. NO LIABILITY IS ASSUMED FOR THE USE OF THE INFORMATION HEREON.
REVISED: 09/19/2019
REASON: ADD PVT. RD.
CAD TECH: ASG



235' TO NW COR. OF SE 1/4 OF NE 1/4

POR. PINE FLAT R.M. 17-14
POR. RECORD OF SURVEY, L.S. 9-46

VICINITY OF PINE FLAT
ASSESSOR'S MAPS BK. 327, PG. 15.
COUNTY OF TULARE, CALIF.

NOTE - ASSESSOR'S BLOCK NUMBERS SHOWN IN ELLIPSES
ASSESSOR'S PARCEL NUMBERS SHOWN IN CIRCLES