

DISCLAIMER

THIS MAP WAS PREPARED FOR LOCAL PROPERTY ASSESSMENT PURPOSES ONLY. THE PARCELS SHOWN HEREON MAY NOT COMPLY WITH STATE AND LOCAL SUBDIVISION ORDINANCES. NO LIABILITY IS ASSUMED FOR THE USE OF THE INFORMATION HEREON.

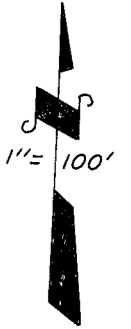
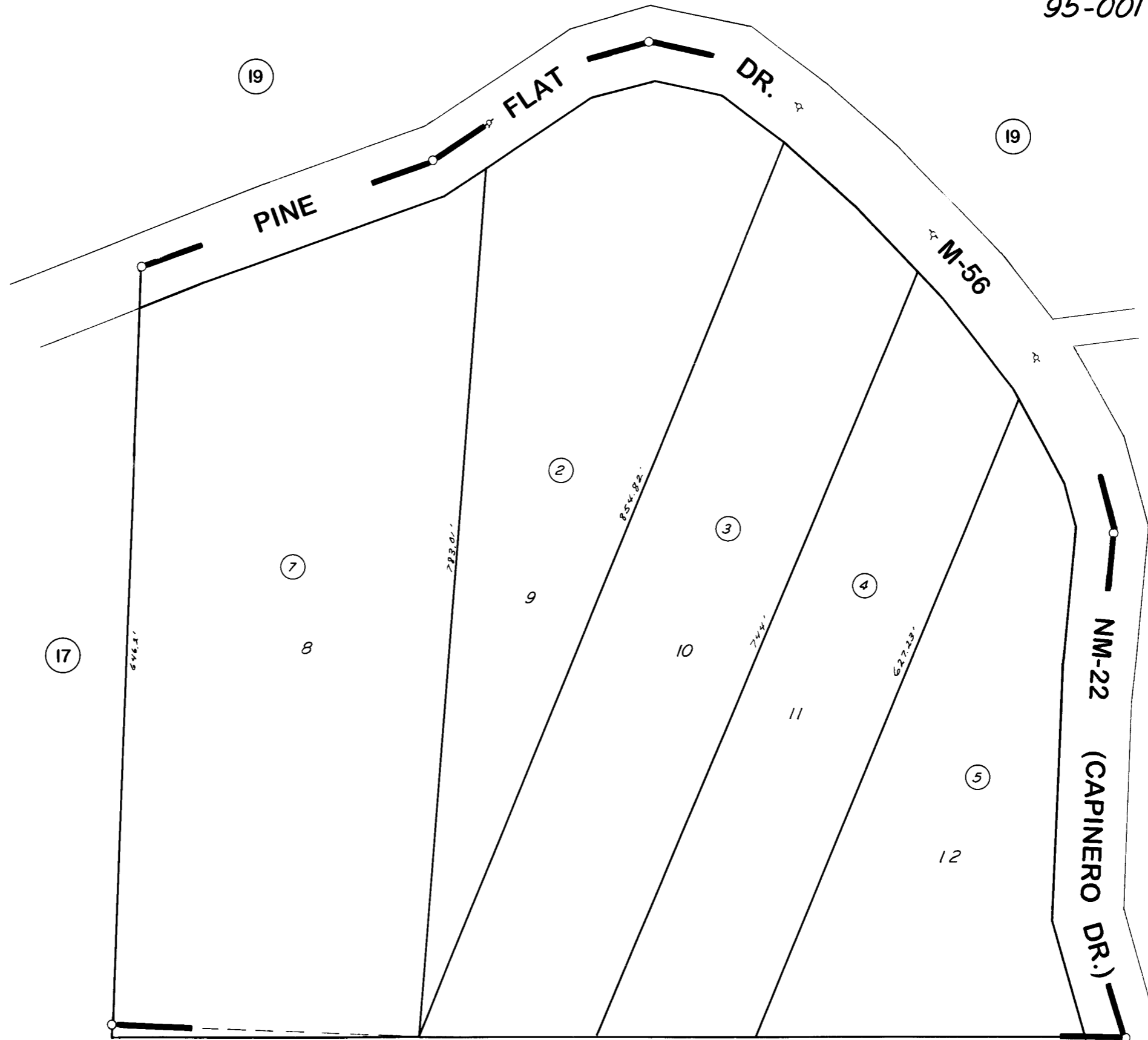
REVISED: 09/05/2013
REASON: 1989-PRN6667
CAD TECH: JRS

POR. NW 1/4 SEC. 4, T.24 S., R.31 E., M. D. B. & M.

TAX CODE AREA

95-001

327-18



POR. RECORD OF SURVEY L. S. 9-46

ASSESSOR'S MAPS BK. 327, PG. 18
COUNTY OF TULARE, CALIF.

NOTE --- ASSESSOR'S BLOCK NUMBERS SHOWN IN ELLIPSES
ASSESSOR'S PARCEL NUMBERS SHOWN IN CIRCLES

