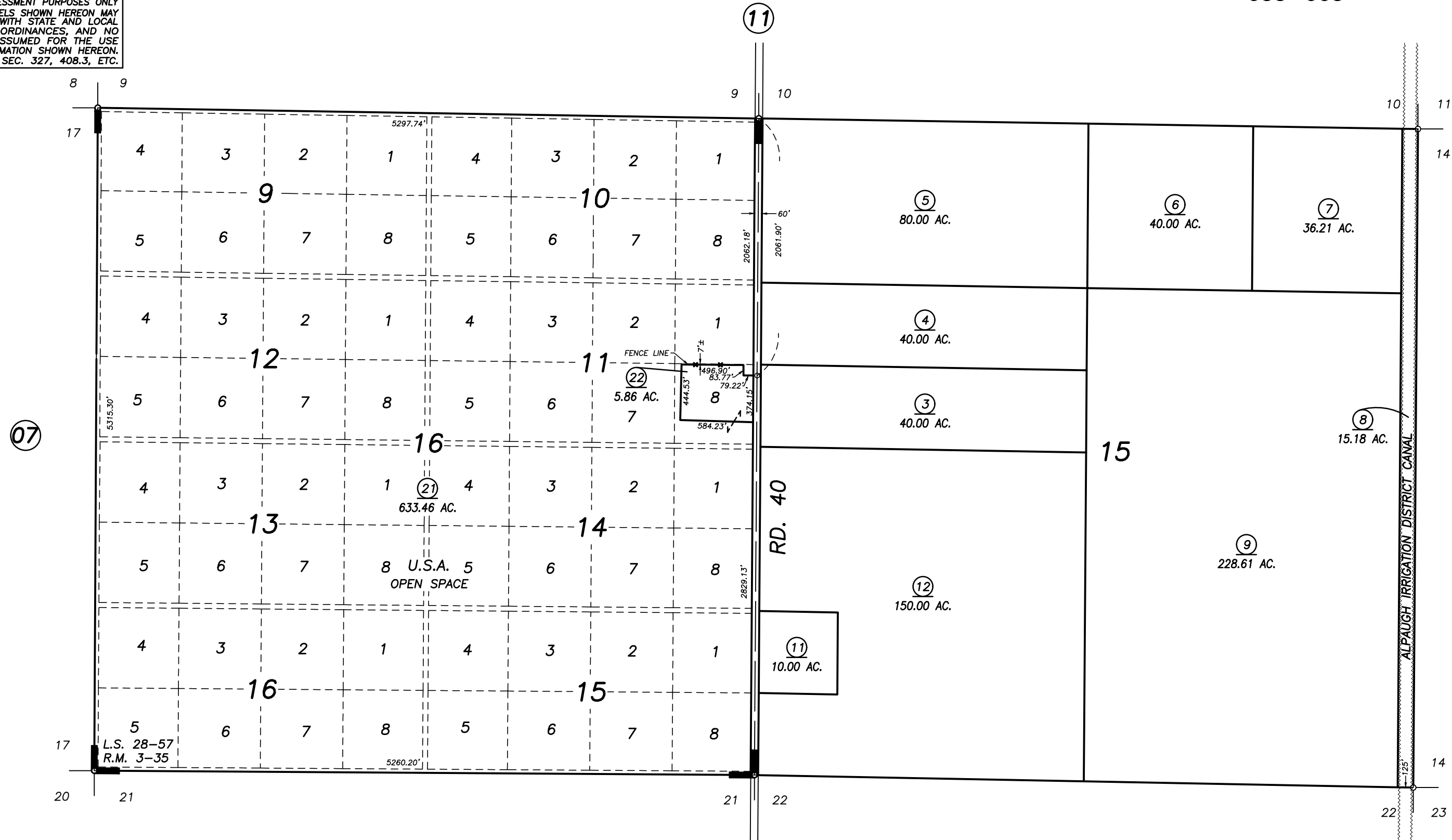
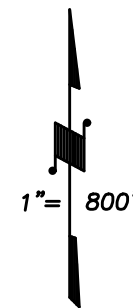
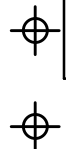


SECTIONS 15 & 16, T.24S., R.23E., M.D.B. & M.

Tax Area Code 330-12  
053-003

**DISCLAIMER**  
THIS MAP WAS PREPARED FOR LOCAL PROPERTY ASSESSMENT PURPOSES ONLY AND THE PARCELS SHOWN HEREON MAY NOT COMPLY WITH STATE AND LOCAL SUBDIVISION ORDINANCES, AND NO LIABILITY IS ASSUMED FOR THE USE OF THE INFORMATION SHOWN HEREON. R & T CODE SEC. 327, 408.3, ETC.



POR. SEVILLA COLONY, R.M. 3-35  
POR. RECORD OF SURVEY, L.S. 20-72  
RECORD OF SURVEY, L.S. 28-57

VICINITY OF ALPAUGH  
ASSESSOR'S MAPS BK. 330 , PG. 12  
COUNTY OF TULARE, CALIFORNIA, U.S.A.

NOTE: Assessor's Parcel Numbers Shown in Circles (1) (123)  
Assessor's Block Numbers Shown in Ellipses

UPDATE CANAL	04/18/2016	ARL
REVISION	DATE	TECH