

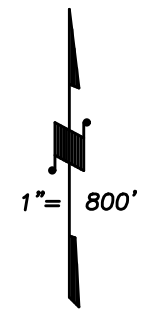
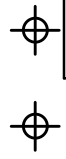
SEC'S. 35 & 36, T.24S., R.23E., M.D.B.&M.

Tax Area Codes 330-18

053-002

053-003

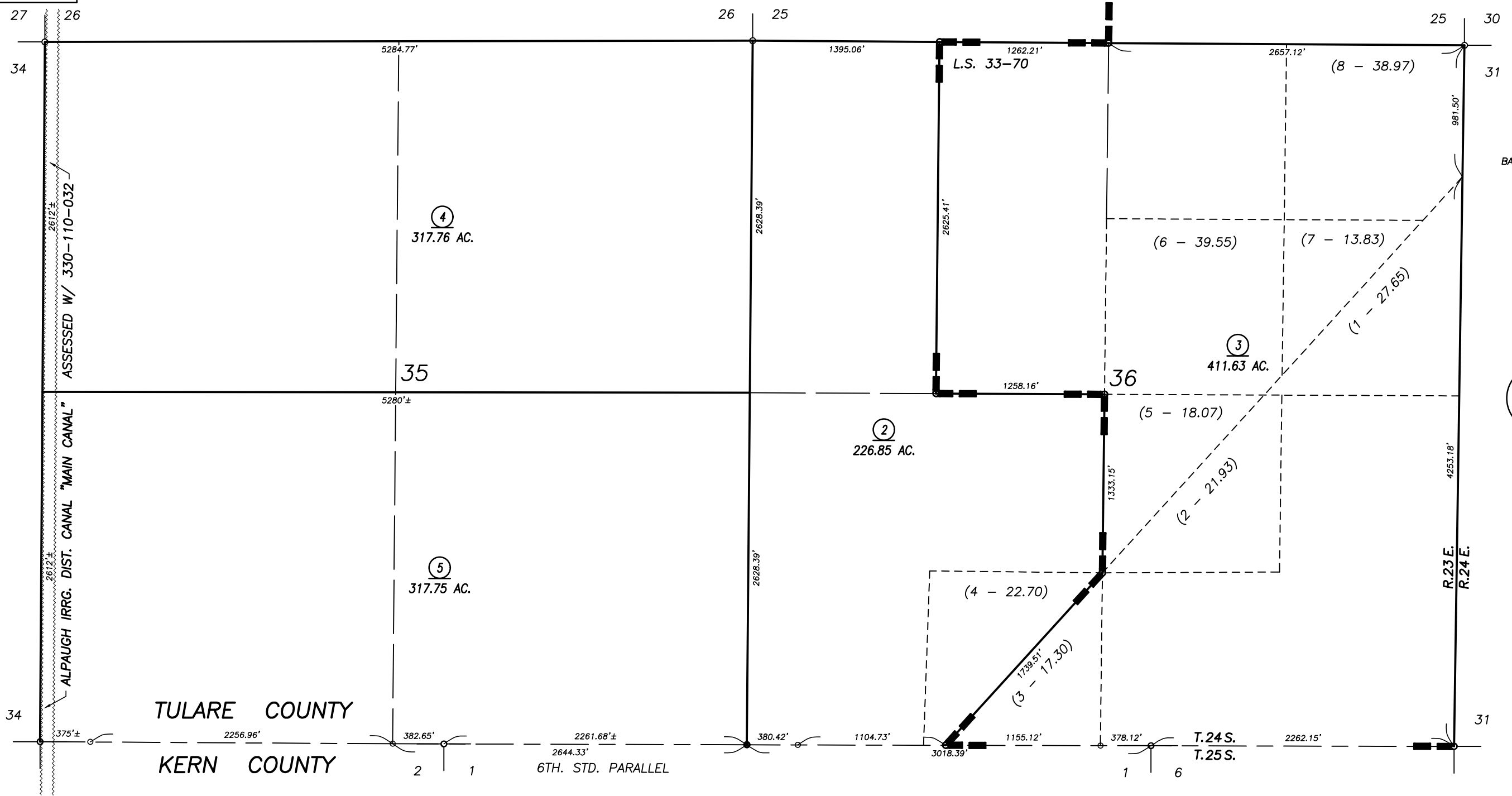
DISCLAIMER
 THIS MAP WAS PREPARED FOR LOCAL PROPERTY ASSESSMENT PURPOSES ONLY AND THE PARCELS SHOWN HEREON MAY NOT COMPLY WITH STATE AND LOCAL SUBDIVISION ORDINANCES, AND NO LIABILITY IS ASSUMED FOR THE USE OF THE INFORMATION SHOWN HEREON. R & T CODE SEC. 327, 408.3, ETC.



BASIS OF BEARINGS:
L.S.33-70

03

Bk. 333



TULARE COUNTY

KERN COUNTY

6TH. STD. PARALLEL

T.24 S.
T.25 S.

POR. RECORD OF SURVEY, L.S. 12-57 (TULARE CO.-KERN CO. LINE)
 POR. RECORD OF SURVEY, L.S. 33-70

VICINITY OF ALPAUGH
 ASSESSOR'S MAPS BK. 330 , PG. 18
 COUNTY OF TULARE, CALIFORNIA, U.S.A.

NOTE: Assessor's Parcel Numbers Shown in Circles (1) (123)
 Assessor's Block Numbers Shown in Ellipses

2016-0017778	04/18/2016	ARL
REVISION	DATE	TECH