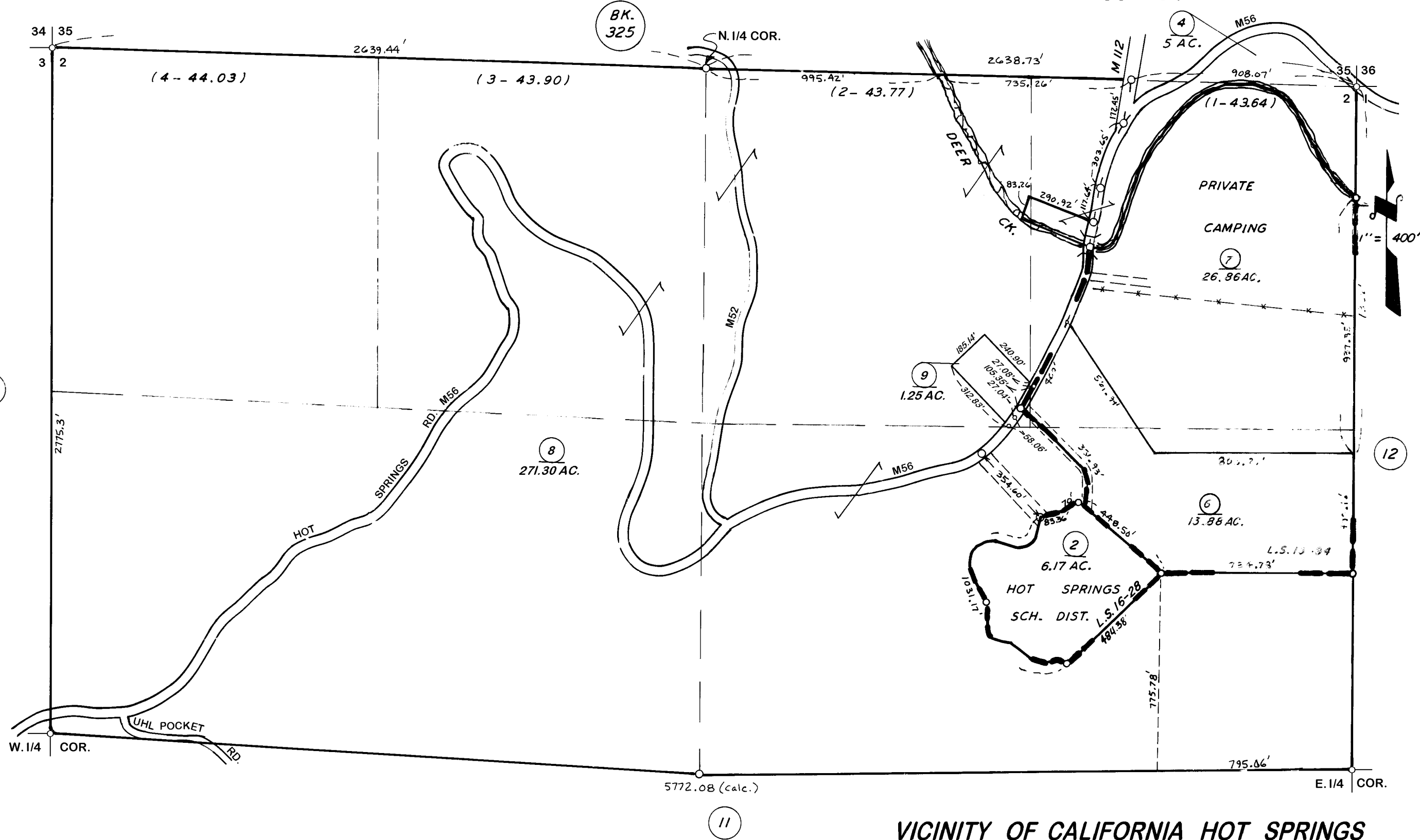


DISCLAIMER
 THIS MAP WAS PREPARED FOR LOCAL PROPERTY ASSESSMENT PURPOSES ONLY. THE PARCELS SHOWN HEREON MAY NOT COMPLY WITH STATE AND LOCAL SUBDIVISION ORDINANCES. NO LIABILITY IS ASSUMED FOR THE USE OF THE INFORMATION HEREON.

REVISED: 09/05/2013
 REASON: 1989-PRN6667
 CAD TECH: JRS



RECORD OF SURVEY,
RECORD OF SURVEY,

L.S. 16-28
L.S. 19-94

VICINITY OF CALIFORNIA HOT SPRINGS
ASSESSOR'S MAPS BK. 344 PG. 19
COUNTY OF TULARE, CALIF.

NOTE-ASSESSOR'S BLOCK NUMBERS SHOWN IN ELLIPSES
ASSESSOR'S PARCEL NUMBERS SHOWN IN CIRCLES