

N1/2 OF NW1/4 OF NE1/4 SEC.23, T.18S., R.24E., M.D.B.&M.

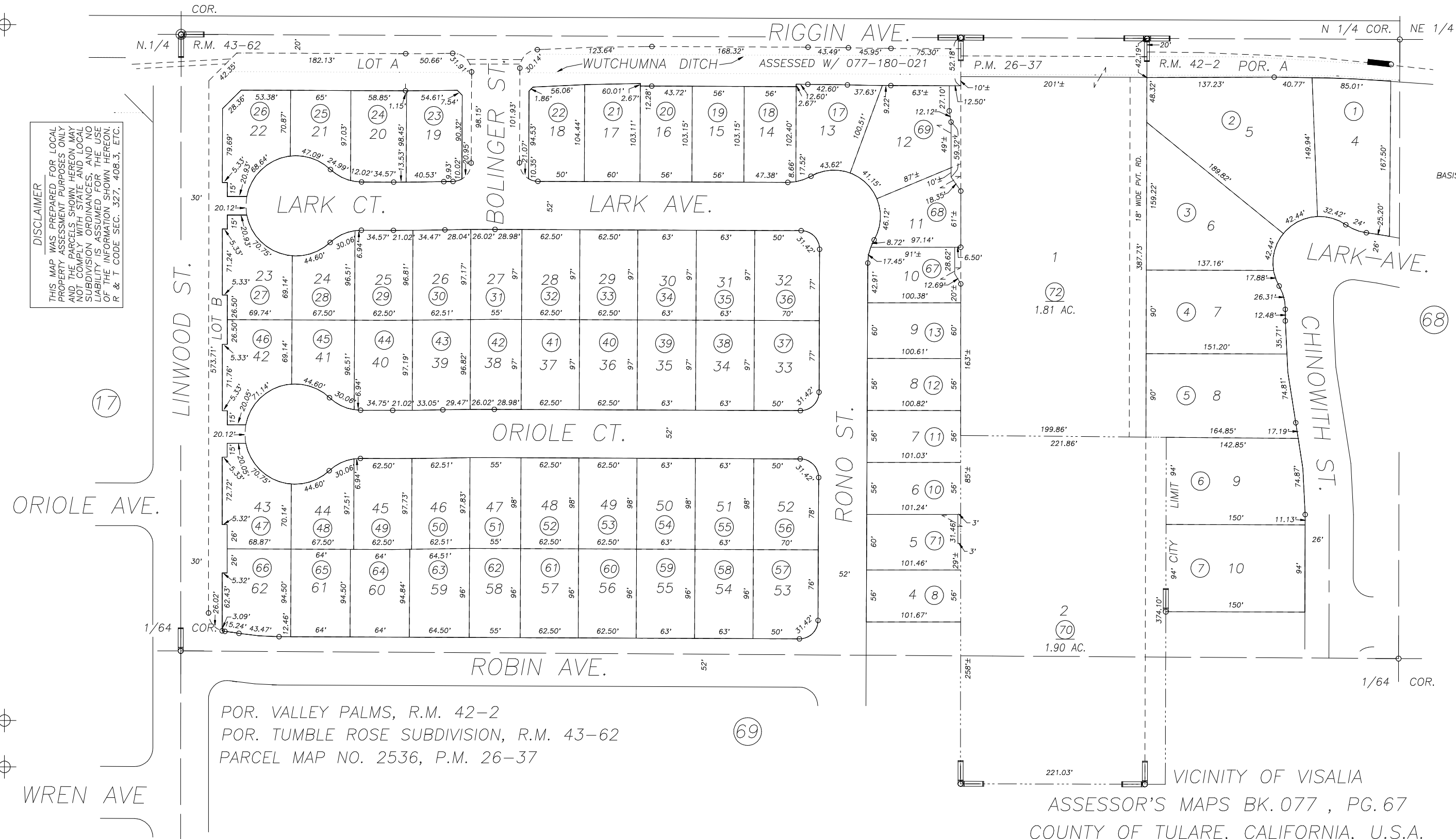
Tax Area Codes 077-67
006-215
153-015

06

DISCLAIMER
THIS MAP WAS PREPARED FOR LOCAL PROPERTY ASSESSMENT PURPOSES ONLY AND THE PARCELS SHOWN HEREON MAY NOT COMPLY WITH STATE AND LOCAL SUBDIVISION ORDINANCES, AND NO LIABILITY IS ASSUMED FOR THE USE OF THE INFORMATION SHOWN HEREON. R & T CODE SEC. 327, 408.3, ETC.

1" = 100'

BASIS OF BEARINGS:
R.M. 42-2



POR. VALLEY PALMS, R.M. 42-2
POR. TUMBLE ROSE SUBDIVISION, R.M. 43-62
PARCEL MAP NO. 2536, P.M. 26-37

69

VICINITY OF VISALIA
ASSESSOR'S MAPS BK. 077 , PG. 67
COUNTY OF TULARE, CALIFORNIA, U.S.A.

NOTE: Assessor's Parcel Numbers Shown in Circles
Assessor's Block Numbers Shown in Ellipses

CITY LIMIT CHANGE	06/02/2017	ASG
REVISION	DATE	TECH