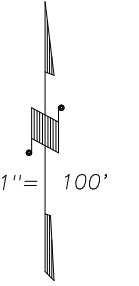
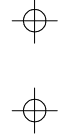


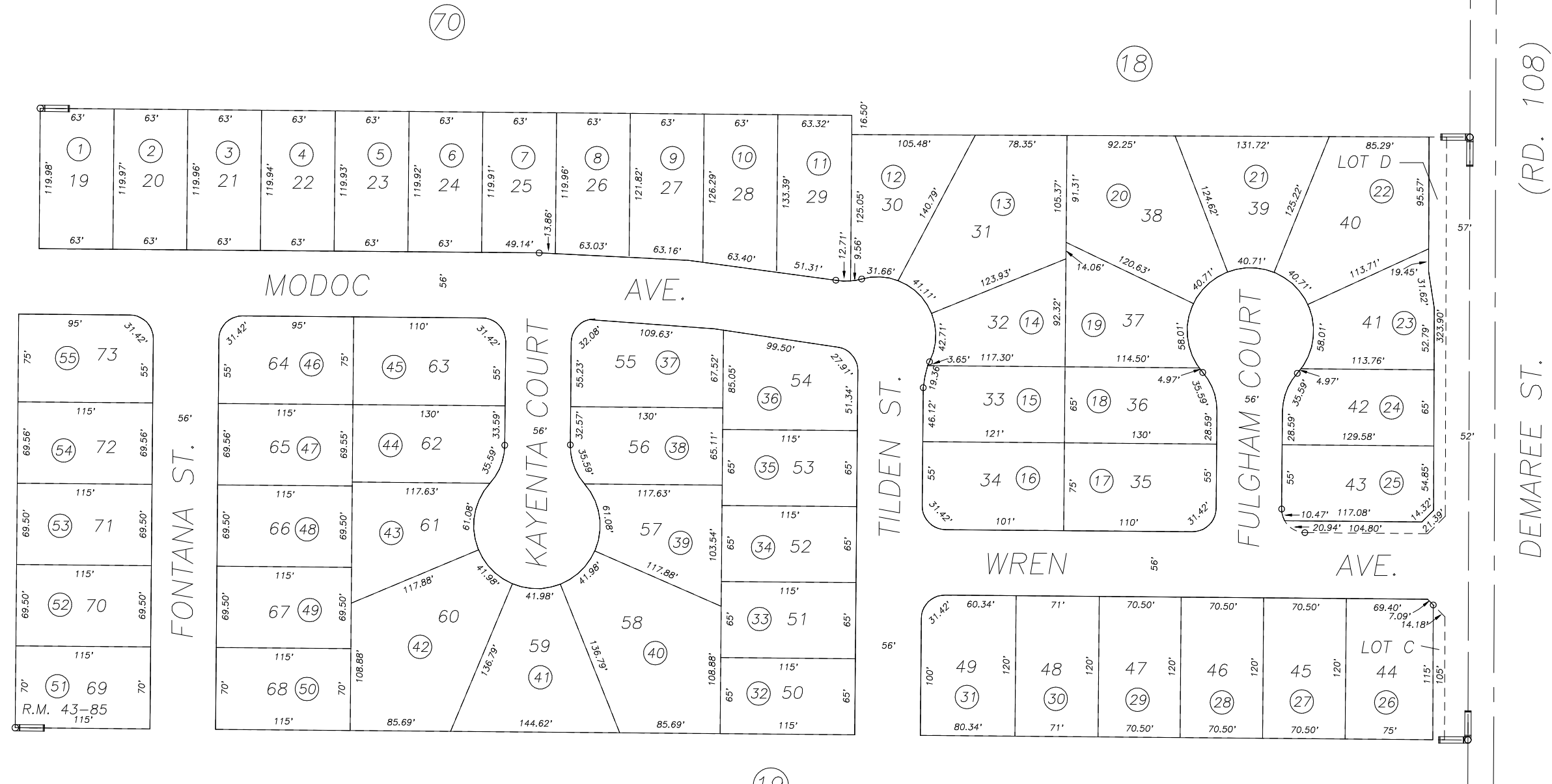
S1/2 OF N1/2 OF NE1/4 SEC.23, T.18S., R.24E., M.D.B.&M.

Tax Area Codes 077-83  
006-215

**DISCLAIMER**  
THIS MAP WAS PREPARED FOR LOCAL  
PROPERTY ASSESSMENT PURPOSES ONLY  
AND THE PARCELS SHOWN HEREON MAY  
NOT COMPLY WITH STATE AND LOCAL  
SUBDIVISION ORDINANCES, AND NO  
LIABILITY IS ASSUMED FOR THE USE  
OF THE INFORMATION SHOWN HEREON.  
R & T CODE SEC. 327, 408.3, ETC.



BASIS OF BEARINGS:  
R.M. 43-85



POR KAYENTA CROSSING, R.M. 43-85

CITY OF VISALIA  
ASSESSOR'S MAPS BK. 077 , PG. 83  
COUNTY OF TULARE, CALIFORNIA, U.S.A.

NOTE: Assessor's Parcel Numbers Shown in Circles (1) (23)  
Assessor's Block Numbers Shown in Ellipses (70) (18) (82) (19)

2017-0033601	9/14/2017	NFL
REVISION	DATE	TECH