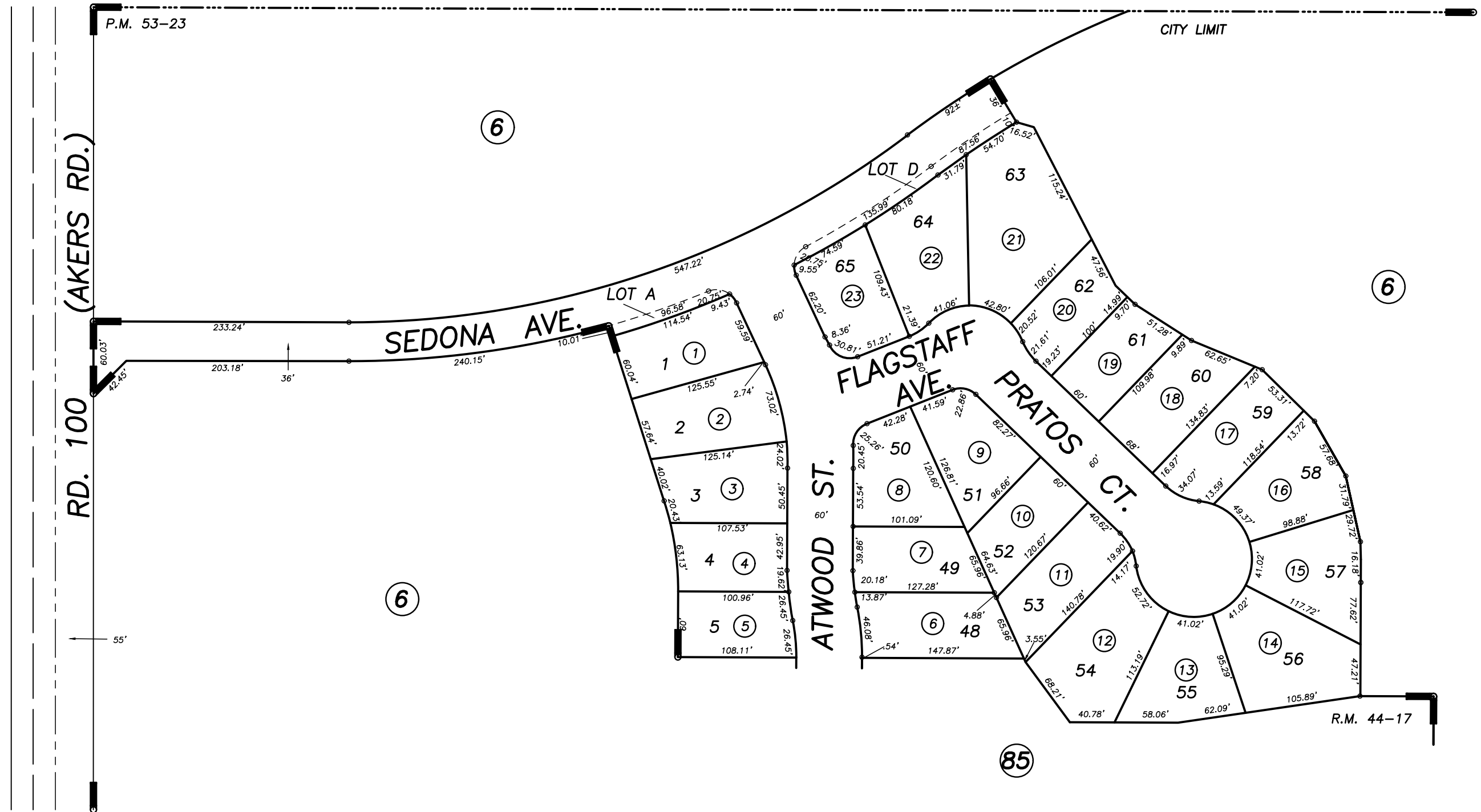
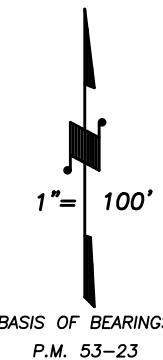
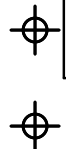


DISCLAIMER

THIS MAP WAS PREPARED FOR LOCAL PROPERTY ASSESSMENT PURPOSES ONLY AND THE PARCELS SHOWN HEREON MAY NOT COMPLY WITH STATE AND LOCAL SUBDIVISION ORDINANCES, AND NO LIABILITY IS ASSUMED FOR THE USE OF THE INFORMATION SHOWN HEREON. R & T CODE SEC. 327, 408.3, ETC.



POR. PARCEL MAP NO. 5216, P.M. 53-23
POR. LOWERY WEST, PHASE 1A, R.M. 44-17

CITY OF VISALIA
ASSESSOR'S MAPS BK. 077 , PG. 86
COUNTY OF TULARE, CALIFORNIA, U.S.A.

NOTE: Assessor's Parcel Numbers Shown in Circles
Assessor's Block Numbers Shown in Ellipses

2019-0005325	03/15/2019	NFL
REVISION	DATE	TECH