

DISCLAIMER
THIS MAP WAS PREPARED FOR LOCAL PROPERTY ASSESSMENT PURPOSES ONLY AND THE PARCELS SHOWN HEREON MAY NOT COMPLY WITH STATE AND LOCAL SUBDIVISION ORDINANCES, AND NO LIABILITY IS ASSUMED FOR THE USE OF THE INFORMATION SHOWN HEREON. R & T CODE SEC. 327, 408.3, ETC.

W.1/4 COR.

N1/4 COR.

SW1/4

MOONEY BLVD.

(AVE. 316) — 11 — RIVERWAY DR.

SECTION LIN.

CITY LIMIT

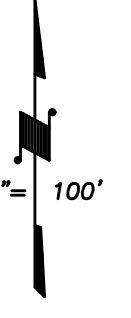
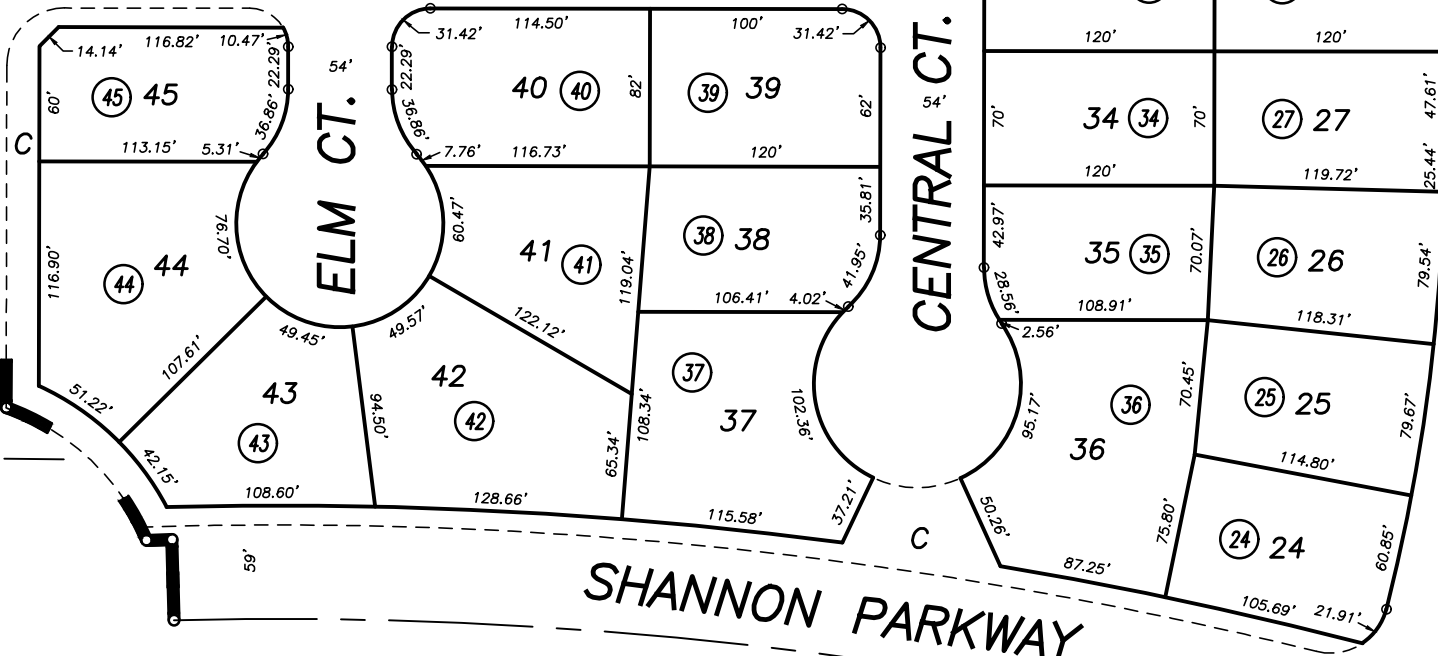
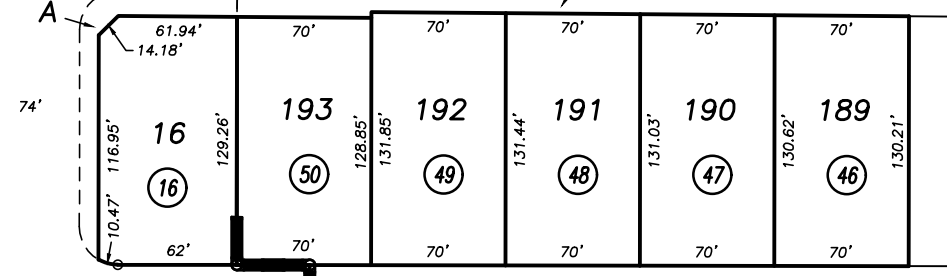
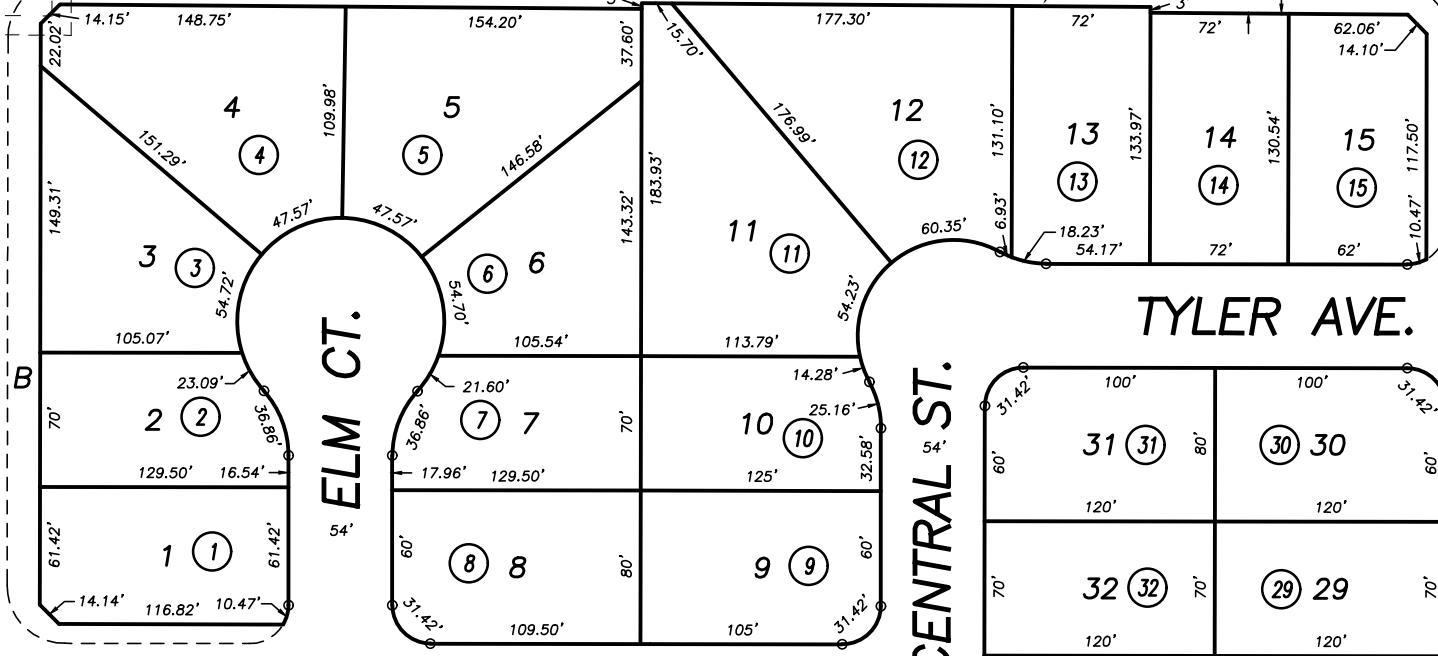
R.M. 43-55

R.M. 44-4

POR. A

ST. JOHNS DITCH
R.24 E. ASSESSED W/078-260-028
R.25 E.

1/64 COR.



BASIS OF BEARINGS:
R.M. 43-55

POR. SHANNON RANCH 3, UNITS NO. 1, 2, 3, 4 AND 6, R.M. 43-55
POR. SHANNON RANCH 3, UNITS NO. 5, 7 AND 8, R.M. 44-4

CITY OF VISALIA
ASSESSOR'S MAPS BK. 078 , PG. 36
COUNTY OF TULARE, CALIFORNIA, U.S.A.