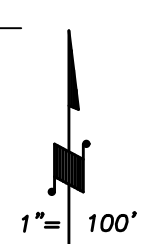
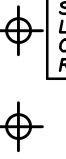
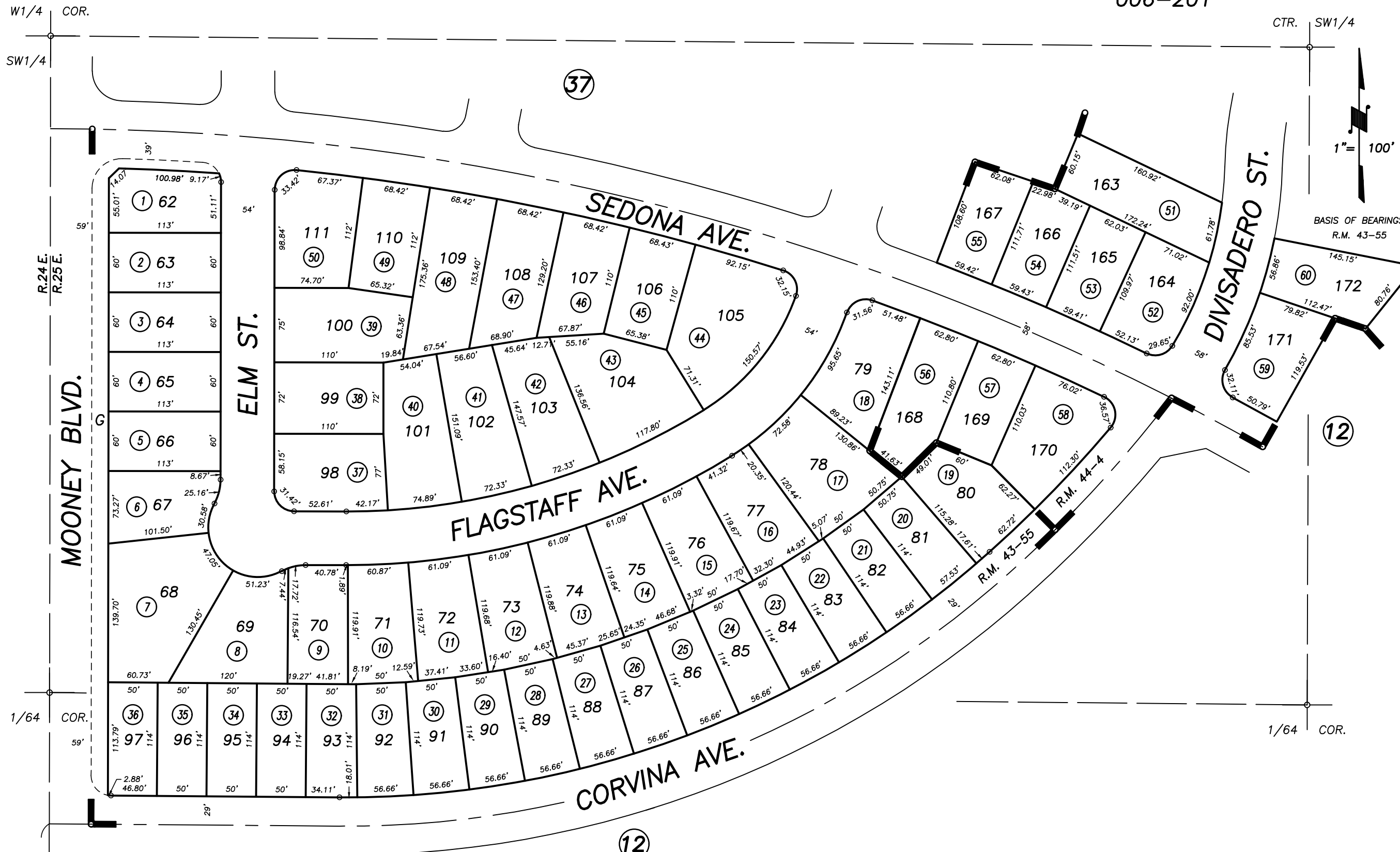


N1/2 OF SW1/4 OF SW1/4 SEC.18, T.18S., R.25E., M.D.B.&M.

Tax Area Codes 078-38

006-201

DISCLAIMER  
THIS MAP WAS PREPARED FOR LOCAL PROPERTY ASSESSMENT PURPOSES ONLY AND THE PARCELS SHOWN HEREON MAY NOT COMPLY WITH STATE AND LOCAL SUBDIVISION ORDINANCES, AND NO LIABILITY IS ASSUMED FOR THE USE OF THE INFORMATION SHOWN HEREON. R & T CODE SEC. 327, 408.3, ETC.



POR. SHANNON RANCH 3, UNITS NO. 1, 2, 3, 4 AND 6, R.M. 43-55  
POR. SHANNON RANCH 3, UNITS NO. 5, 7 AND 8, R.M. 44-4

CITY OF VISALIA  
ASSESSOR'S MAPS BK. 078 , PG. 38  
COUNTY OF TULARE, CALIFORNIA, U.S.A.

NOTE: Assessor's Parcel Numbers Shown in Circles  
Assessor's Block Numbers Shown in Ellipses

2018-0028710	07/06/2018	JMM
REVISION	DATE	TECH

W1/4 COR.  
SW1/4  
R.24E.  
R.25E.  
MOONEY BLVD.  
1/64 COR.  
59'  
13  
24  
19

CTR. SW1/4  
DIVISADERO ST.  
BASIS OF BEARINGS:  
R.M. 43-55  
12  
1/64 COR.