

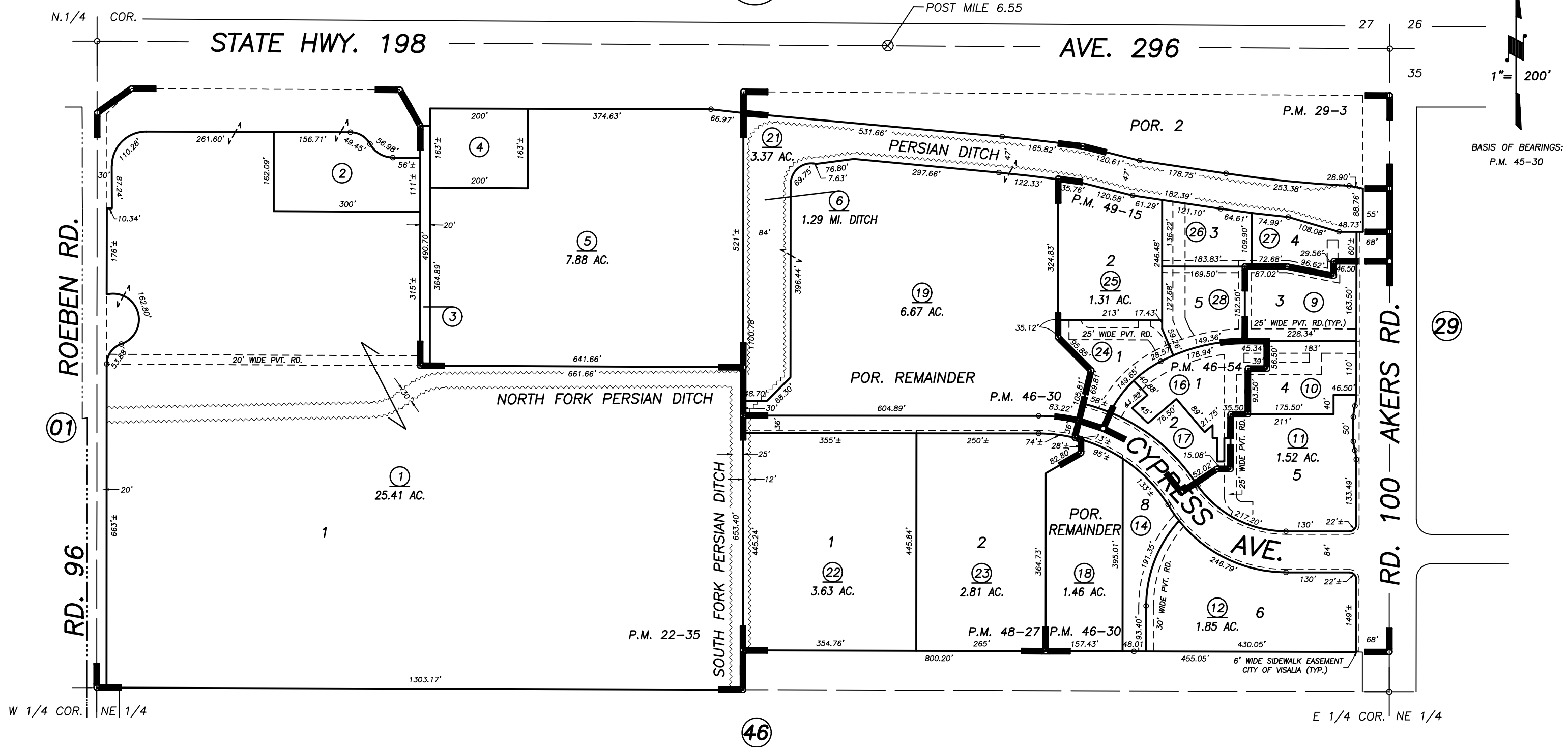
**DISCLAIMER**  
 THIS MAP WAS PREPARED FOR LOCAL PROPERTY ASSESSMENT PURPOSES ONLY AND THE PARCELS SHOWN HEREON MAY NOT COMPLY WITH STATE AND LOCAL SUBDIVISION ORDINANCES, AND NO LIABILITY IS ASSUMED FOR THE USE OF THE INFORMATION SHOWN HEREON.

N1/2 OF NE1/4 SEC.34, T.18S., R.24E., M.D.B.&M.

Tax Area Codes **087-45**

006-003  
 006-208

**BK. 085**



PARCEL MAP NO. 2134, P.M. 22-35  
 PARCEL MAP NO. 4525, P.M. 46-30  
 RECORD OF SURVEY, L.S. 19-24 (CTR. LN. HWY. 198)  
 POR. PARCEL MAP NO. 2802, P.M. 29-3  
 PARCEL MAP NO. 4549, P.M. 46-54  
 PARCEL MAP NO. 4722, P.M. 48-27  
 PARCEL MAP NO. 4810, P.M. 49-15

**CITY OF VISALIA**  
**ASSESSOR'S MAPS BK. 087 , PG. 45**  
**COUNTY OF TULARE, CALIFORNIA, U.S.A.**

NOTE: Assessor's Parcel Numbers Shown in Circles (1) (123)  
 Assessor's Block Numbers Shown in Ellipses

TRAC UPDATE	5/30/2019	CFG
REVISION	DATE	TECH