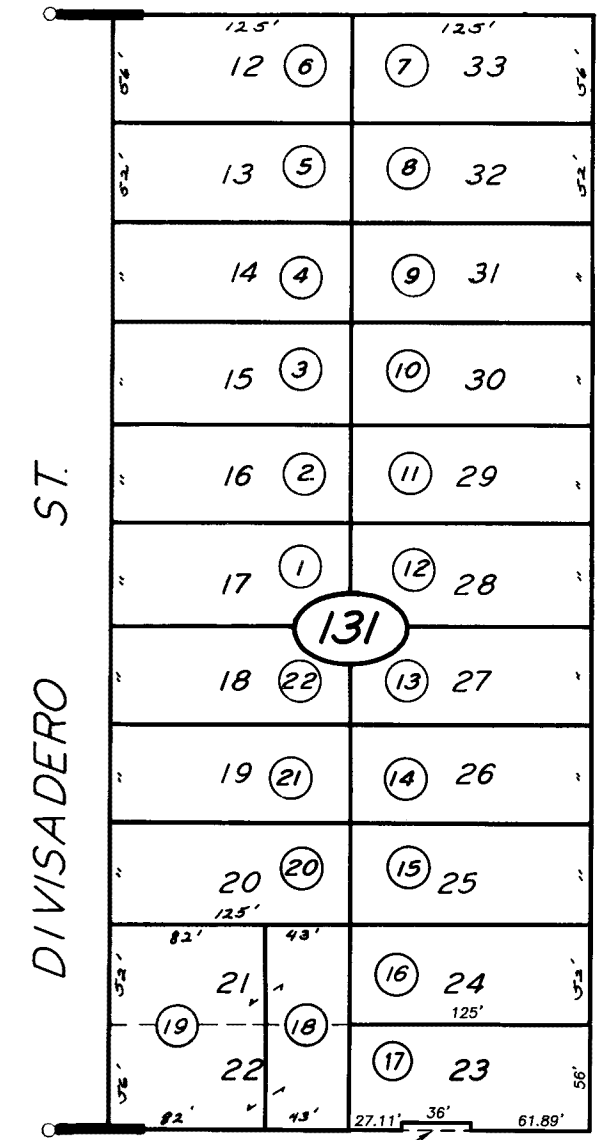


DISCLAIMER

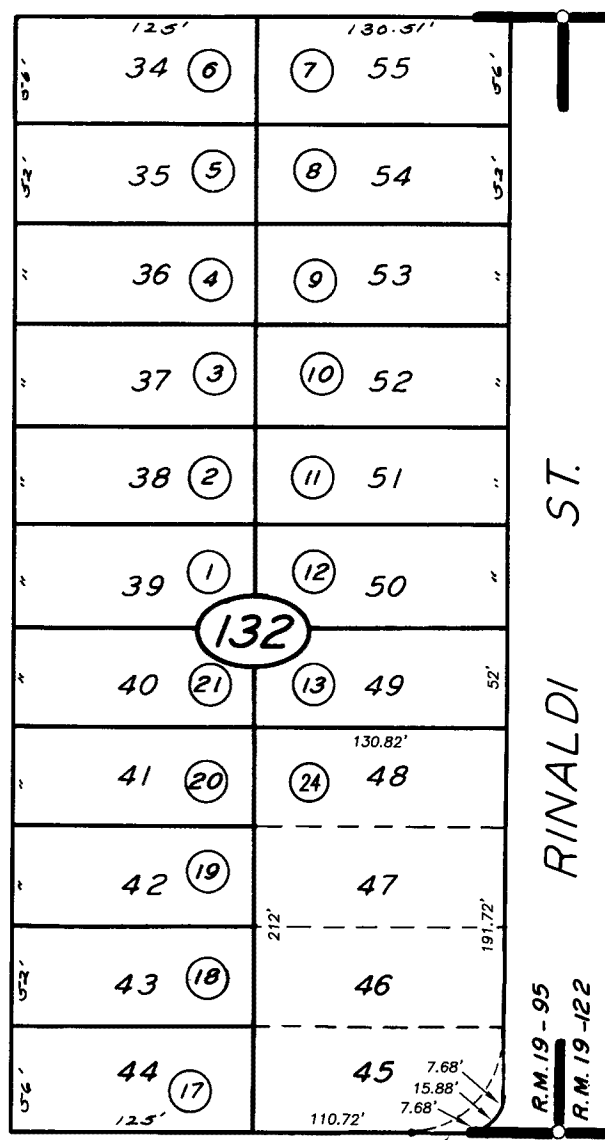
THIS MAP WAS PREPARED FOR LOCAL PROPERTY ASSESSMENT PURPOSES ONLY AND THE PARCELS SHOWN HEREON MAY NOT COMPLY WITH STATE AND LOCAL SUBDIVISION ORDINANCES, AND NO LIABILITY IS ASSUMED FOR THE USE OF THE INFORMATION SHOWN HEREON. R & T CODE SEC. 327, 408.3, ETC.

12

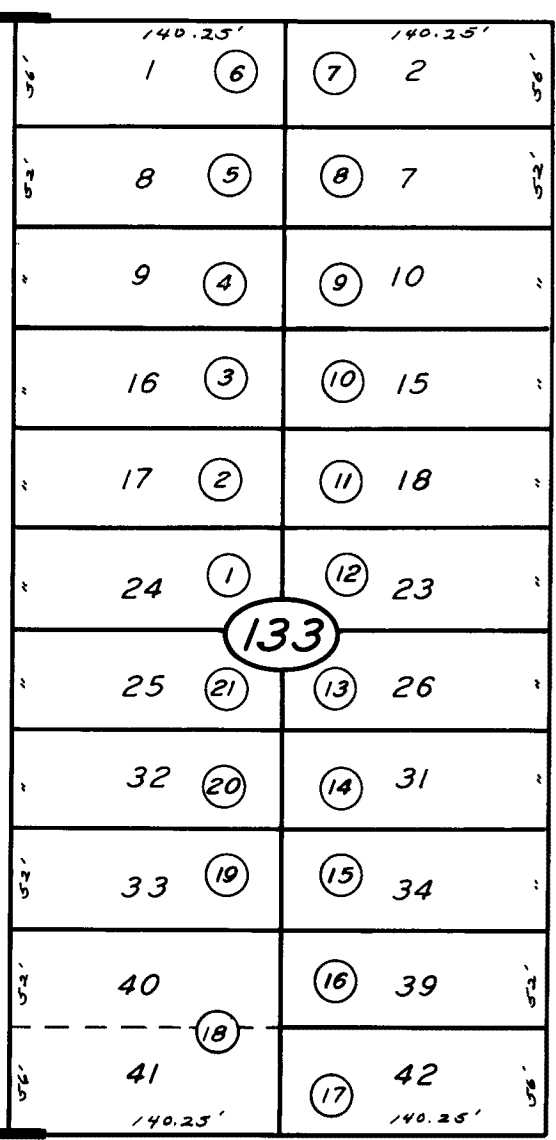
ELOWIN AVE.



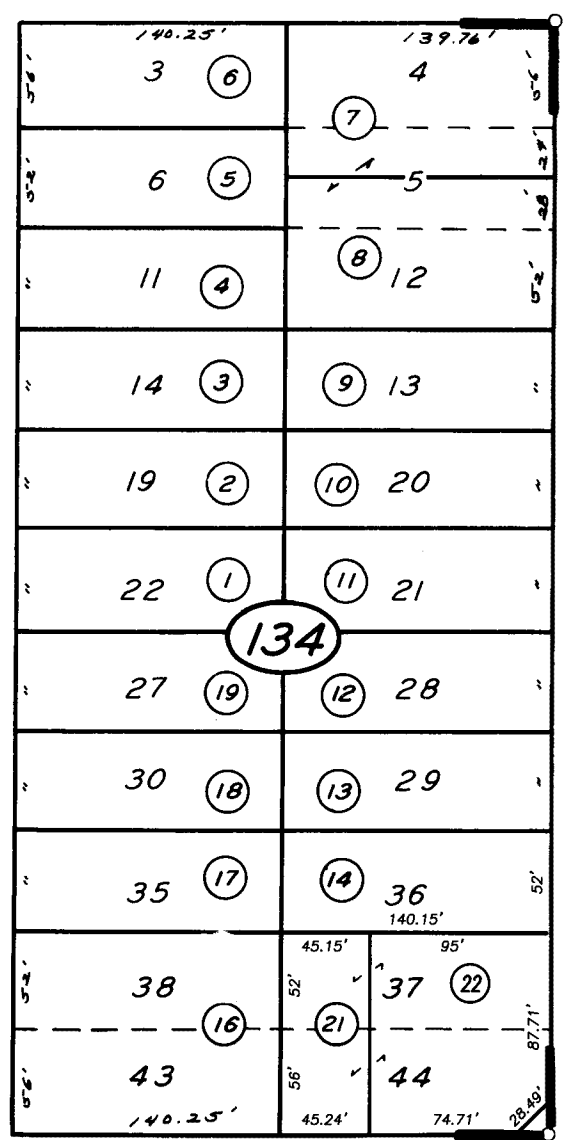
HALL AVE.



RINALDI ST.



PARK AVE.



GIDDINGS AVE.

HOUSTON AVE.

AVE. 304

S 1/4 COR.

BK.93

TRACT NO. 93, R.M. 19-122  
POR. CONNELLY SUB. NO. 3, R.M. 19-95

CITY OF VISALIA  
ASSESSOR'S MAPS BK. 090 , PG. 13  
COUNTY OF TULARE, CALIFORNIA, U.S.A.

1" = 100'

10