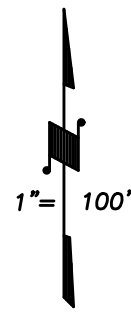
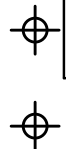
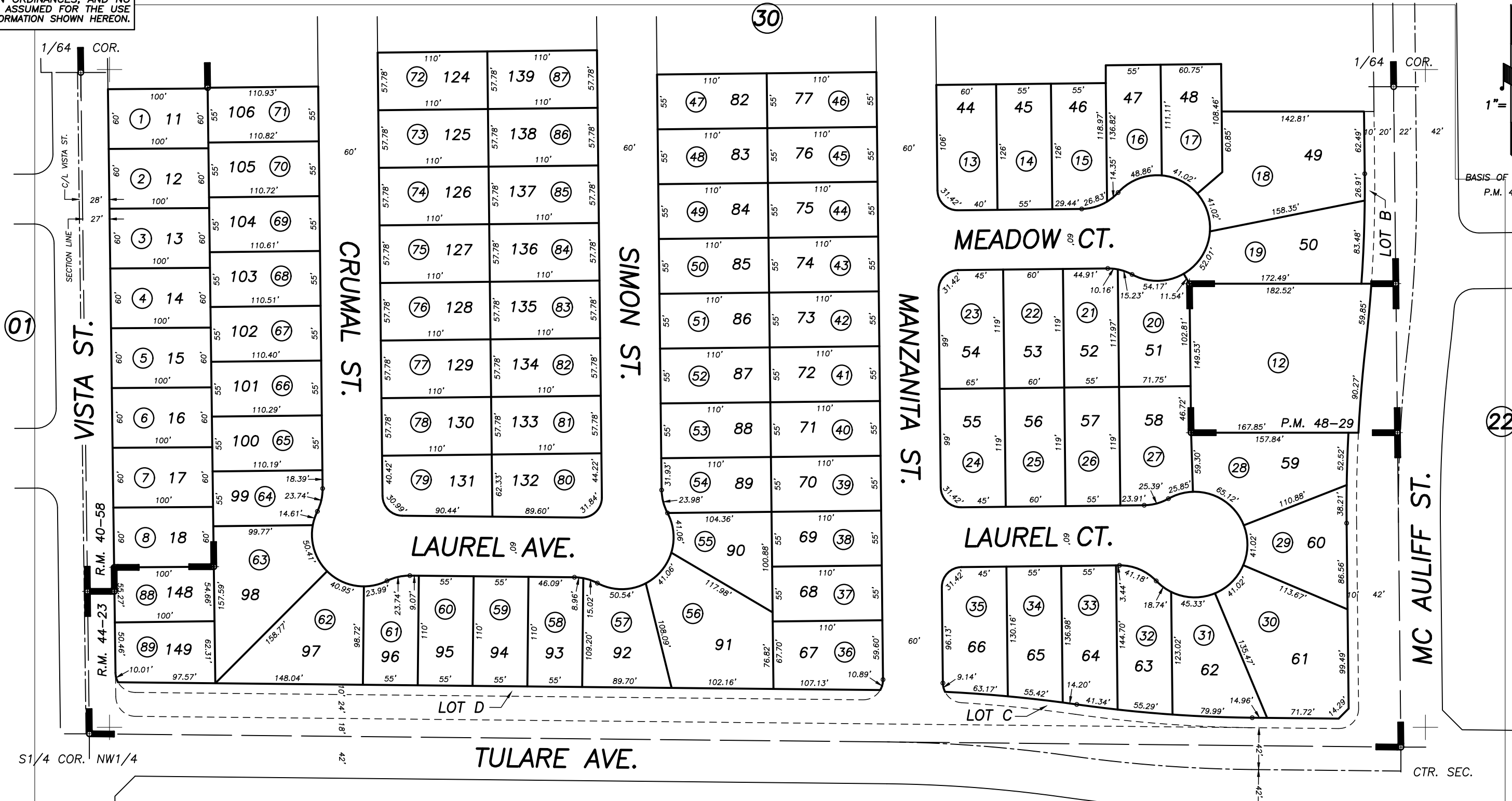


DISCLAIMER

THIS MAP WAS PREPARED FOR LOCAL PROPERTY ASSESSMENT PURPOSES ONLY AND THE PARCELS SHOWN HEREON MAY NOT COMPLY WITH STATE AND LOCAL SUBDIVISION ORDINANCES, AND NO LIABILITY IS ASSUMED FOR THE USE OF THE INFORMATION SHOWN HEREON.



BASIS OF BEARINGS:
P.M. 48-29



POR. RECORD OF SURVEY, L.S. 20-17 (SEC.34, ETC.)
POR. VISTA HEIGHTS, R.M. 40-58
POR. PARCEL MAP NO. 4724, P.M. 48-29
POR. CANDELAS SUBDIVISION, R.M. 44-23

CITY OF VISALIA
ASSESSOR'S MAPS BK. 101 , PG.31
COUNTY OF TULARE, CALIFORNIA, U.S.A.