

N1/2 OF NE1/4 OF NW1/4 SEC. 27, T.18S., R.25E., M.D.B.&M.

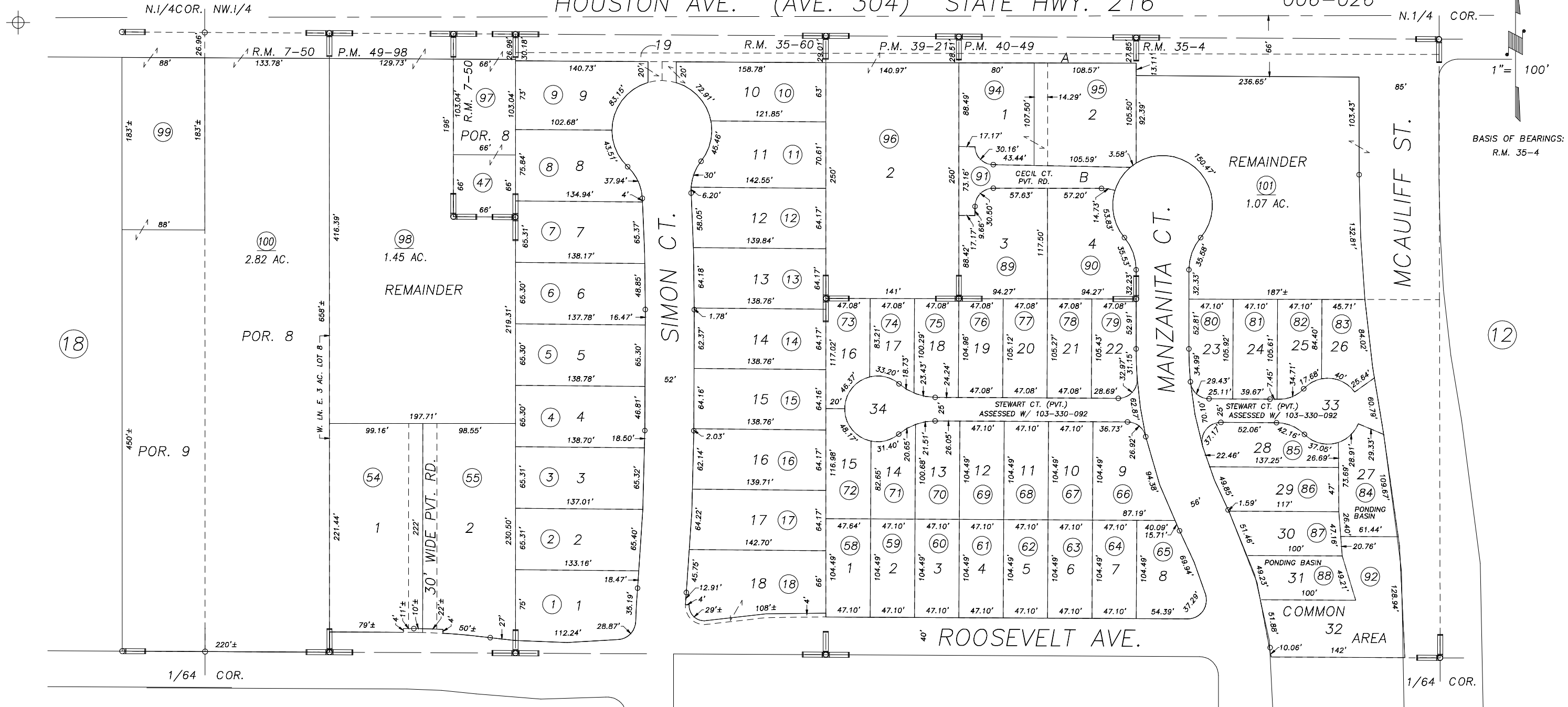
Tax Area Codes 103-33

DISCLAIMER
THIS MAP WAS PREPARED FOR LOCAL PROPERTY ASSESSMENT PURPOSES ONLY AND THE PARCELS SHOWN HEREON MAY NOT COMPLY WITH STATE AND LOCAL SUBDIVISION ORDINANCES, AND NO LIABILITY IS ASSUMED FOR THE USE OF THE INFORMATION SHOWN HEREON. R & T CODE SEC. 327, 408.3, ETC

53

006-010
006-074
006-169
006-026

HOUSTON AVE. (AVE. 304) STATE HWY. 216



POR. THE OAKS, R.M. 7-50
PARCEL MAP NO. 3818, P.M. 39-21
GOLDEN WEST VILLAGE UNIT 2, R.M. 35-4
PACEL MAP NO. 3945, P.M. 40-49
EAST ROOSEVELT ESTATES, R.M. 35-60
PARCEL MAP NO. 4893, P.M. 49-98

CITY OF VISALIA
ASSESSOR'S MAPS BK.103 , PG.33
COUNTY OF TULARE, CALIFORNIA, U.S.A.

NOTE: Assessor's Parcel Numbers Shown in Circles
Assessor's Block Numbers Shown in Ellipses

UPDATE ADJ. PG.	5/22/2017	NFL
REVISION	DATE	TECH