

DISCLAIMER
 THIS MAP WAS PREPARED FOR LOCAL PROPERTY ASSESSMENT PURPOSES ONLY AND THE PARCELS SHOWN HEREON MAY NOT COMPLY WITH STATE AND LOCAL SUBDIVISION ORDINANCES, AND NO LIABILITY IS ASSUMED FOR THE USE OF THE INFORMATION SHOWN HEREON. R & T CODE SEC. 327, 408.3, ETC.

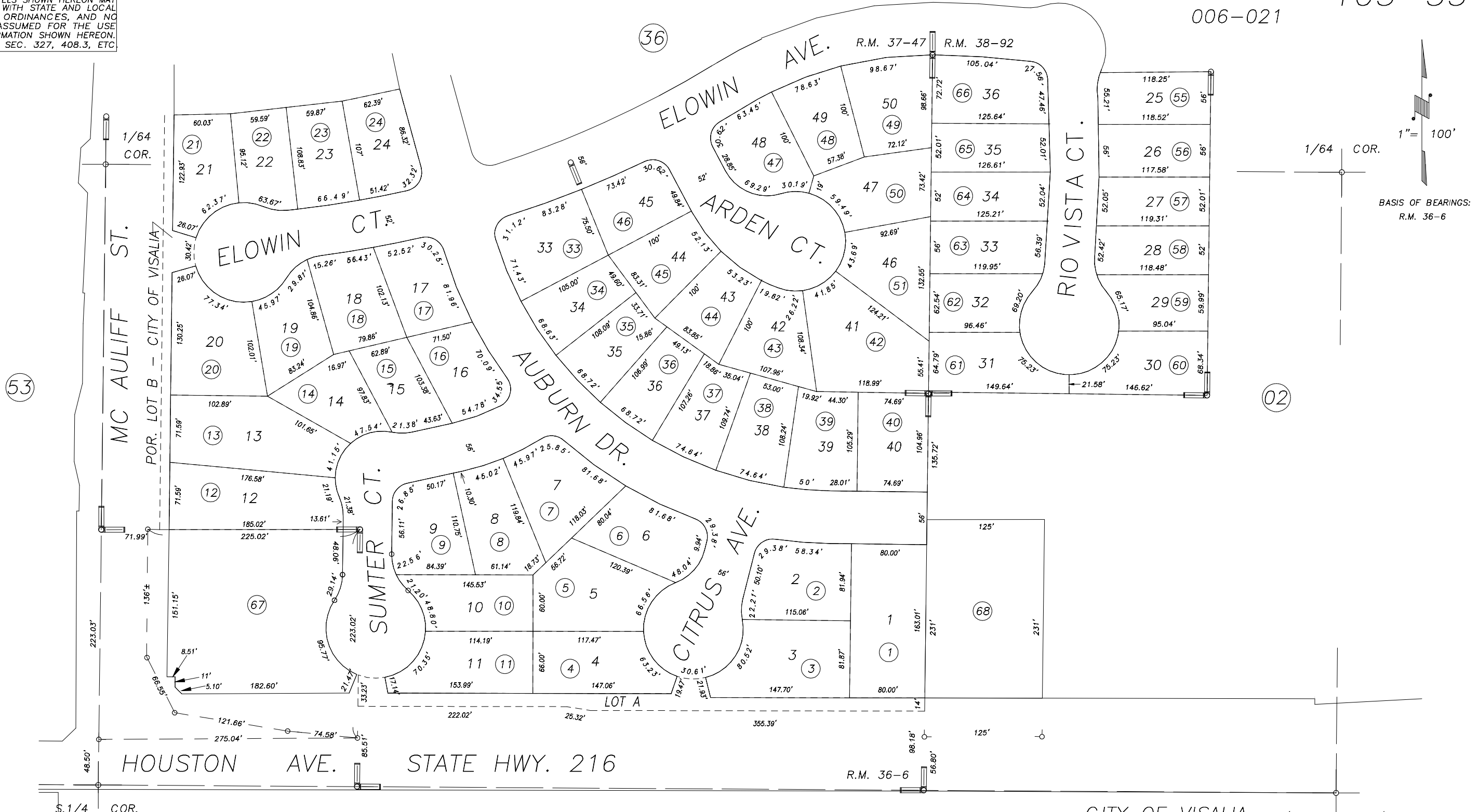
POR. W1/2 OF SE1/4 SEC.22, T.18 S., R.25 E., M.D.B.&M.

Tax Area Code

006-010

103-35

006-021



53
 12
 POR. GOLDEN VALLEY EST. UNIT NO.1, R.M. 36-6
 POR. GOLDEN VALLEY EST. UNIT NO.2, R.M. 37-47
 POR. CAPISTRANO II, R.M. 38-92

02
 CITY OF VISALIA S 1/4 COR. SE 1/4
 ASSESSOR'S MAPS BK.103 , PG.35
 COUNTY OF TULARE, CALIFORNIA, U.S.A.

NOTE: Assessor's Parcel Numbers Shown in Circles 1 123
 Assessor's Block Numbers Shown in Ellipses

UPDATE ADJ. PG.	5/22/2017	NFL
REVISION	DATE	TECH