

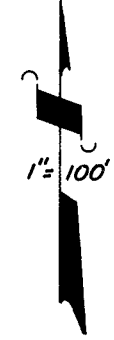
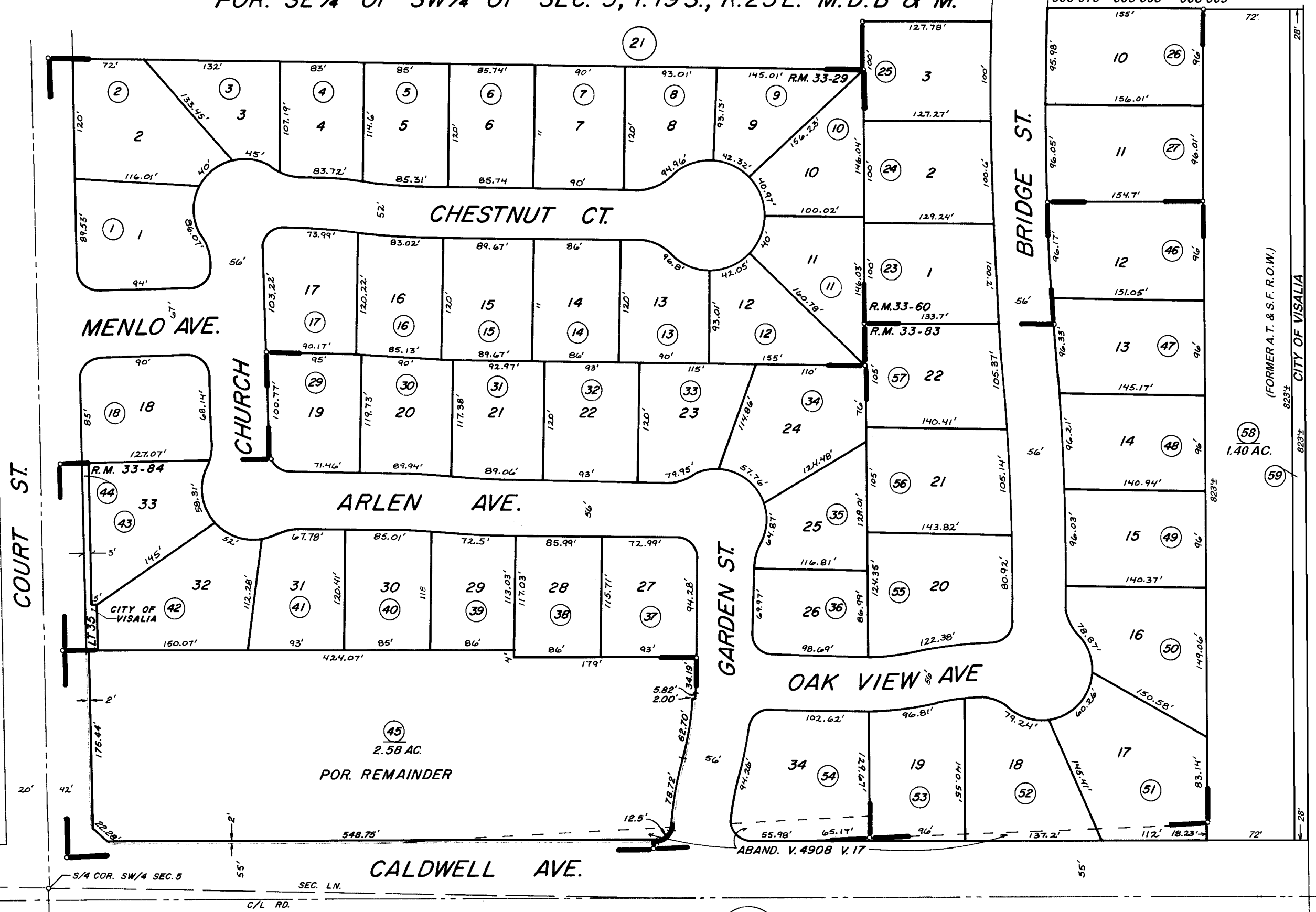
POR. SE 1/4 OF SW 1/4 OF SEC. 5, T.19 S., R.25 E. M.D.B & M.

TAX CODE AREA  
006-079 006-003 006-009

**DISCLAIMER**

THIS MAP WAS PREPARED FOR LOCAL PROPERTY ASSESSMENT PURPOSES ONLY. THE PARCELS SHOWN HEREON MAY NOT COMPLY WITH STATE AND LOCAL SUBDIVISION ORDINANCES. NO LIABILITY IS ASSUMED FOR THE USE OF THE INFORMATION HEREON.

REVISED: 09/05/2013  
REASON: 2006-0089305  
CAD TECH: ASG



13

WESTWOOD PARK UNIT 1 R.M. 33-29  
 PARK SUMMIT UNIT 1 R.M. 33-60  
 PARK SUMMIT UNIT 2 R.M. 33-83  
 WESTWOOD PARK UNIT 2 R.M. 33-84

BK.126

CITY OF VISALIA  
 ASSESSOR'S MAPS BK.123 PG.27  
 COUNTY OF TULARE, CA.