

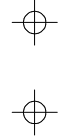
S1/2 OF NW1/4 OF SW1/4 SEC.12, T.20S., R.24E., M.D.B.&M.

Tax Area Codes 177-30

005-000

005-017

DISCLAIMER
 THIS MAP WAS PREPARED FOR LOCAL PROPERTY ASSESSMENT PURPOSES ONLY AND THE PARCELS SHOWN HEREON MAY NOT COMPLY WITH STATE AND LOCAL SUBDIVISION ORDINANCES, AND NO LIABILITY IS ASSUMED FOR THE USE OF THE INFORMATION SHOWN HEREON. R & T CODE SEC. 327, 408.3, ETC.



1/64 COR.



W1/4 COR.
SW1/4

CARDOZA'S TARGET PARK UNIT NO. 1, R.M. 29-63
 PARCEL MAP NO. 4968, P.M. 50-73

07

STATE HWY. 99

DAYTON ST.

08

PT. LOC. 275' W. & 20' S. OF NE COR. OF SE1/4 OF NW1/4 OF SW1/4 SEC. 12

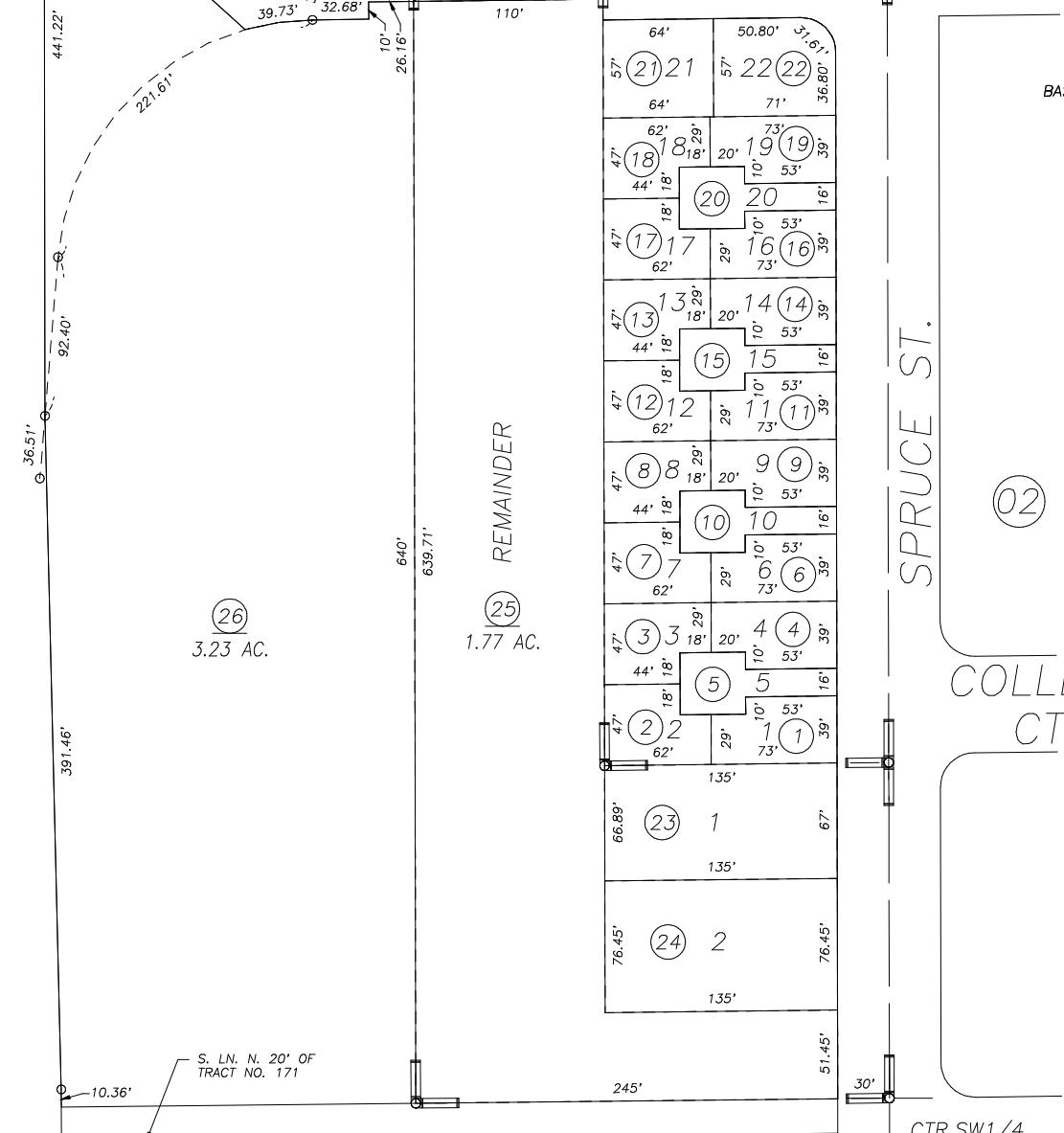
ALPINE AVE.

1/64 COR.

P.M. 50-73 R.M. 29-63

1" = 100'

BASIS OF BEARINGS:
P.M. 50-73



26
3.23 AC.

25
1.77 AC.

REMAINDER

02

STOCKHAM AVE.

CITY OF TULARE

06 ASSESSOR'S MAPS BK. 177 , PG. 30

COUNTY OF TULARE, CALIFORNIA, U.S.A.

NOTE: Assessor's Parcel Numbers Shown in Circles 1 123
 Assessor's Block Numbers Shown in Ellipses

CAD CONVERSION	07/21/2017	LLB
REVISION	DATE	TECH