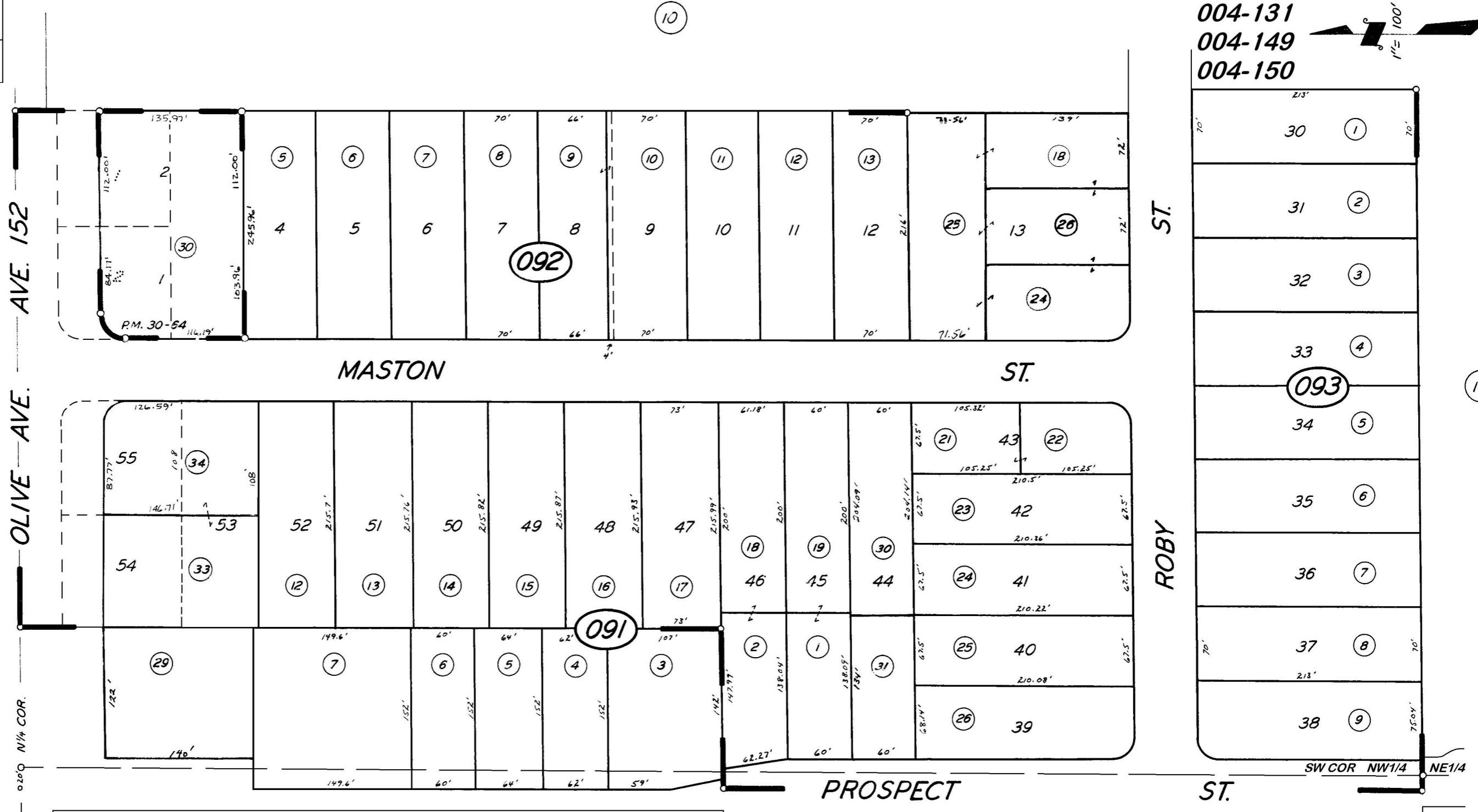
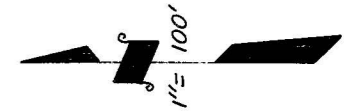


**DISCLAIMER**  
 THIS MAP WAS PREPARED FOR LOCAL PROPERTY ASSESSMENT PURPOSES ONLY. THE PARCELS SHOWN HEREON MAY NOT COMPLY WITH STATE AND LOCAL SUBDIVISION ORDINANCES. NO LIABILITY IS ASSUMED FOR THE USE OF THE INFORMATION HEREON. R & T CODE SEC. 327, 408.3, ETC.  
 REVISED: 06/05/2019  
 REASON: TRAC UPDATE  
 CAD TECH: CFG

POR. NW 1/4 OF NE 1/4 & POR. NE 1/4 OF NW 1/4 SEC. 34, T.21S., R. 27E., M.D.B. & M.

TAX CODE AREA **259-09**  
 004-042  
 004-048  
 004-131  
 004-149  
 004-150



BK.251

POR. TRACT NO. 45, R.M. 19-82  
 PARCEL MAP NO. 2963, P.M. 30-64

CITY OF PORTERVILLE  
 ASSESSOR'S MAPS BK. 259, PG. 09  
 COUNTY OF TULARE, CALIF.

NOTE - ASSESSOR'S BLOCK NUMBERS SHOWN IN ELLIPSES  
 ASSESSOR'S PARCEL NUMBERS SHOWN IN CIRCLES

