

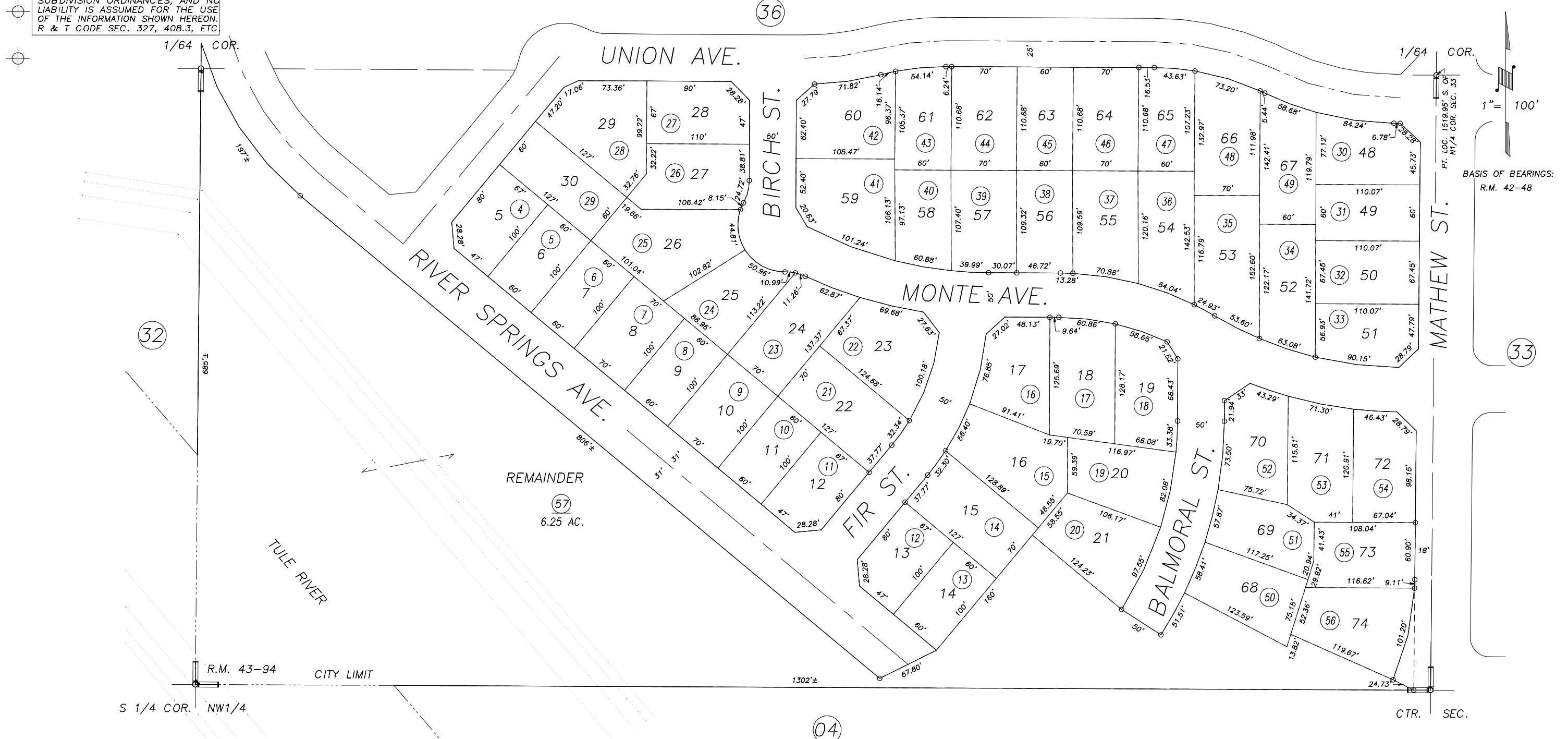
S1/2 OF SE1/4 OF NW1/4 SEC.33, T.21S., R.27E., M.D.B.&M.

Tax Area Codes 259-37

004-130

004-133

DISCLAIMER
THIS MAP WAS PREPARED FOR LOCAL PROPERTY ASSESSMENT PURPOSES ONLY AND THE PARCELS SHOWN HEREON MAY NOT COMPLY WITH STATE AND LOCAL SUBDIVISION ORDINANCES, AND NO LIABILITY IS ASSUMED FOR THE USE OF THE INFORMATION SHOWN HEREON. R & T CODE SEC. 327, 408.3, ETC



POR. SUMMIT ESTATES TWO, PHASE ONE, R.M. 43-94

VICINITY OF PORTERVILLE
ASSESSOR'S MAPS BK.259 , PG.37
COUNTY OF TULARE, CALIFORNIA, U.S.A.

NOTE: Assessor's Parcel Numbers Shown in Circles (1) (123)
Assessor's Block Numbers Shown in Elipses

2017-0074141	01/31/2017	GL
REVISION	DATE	TECH