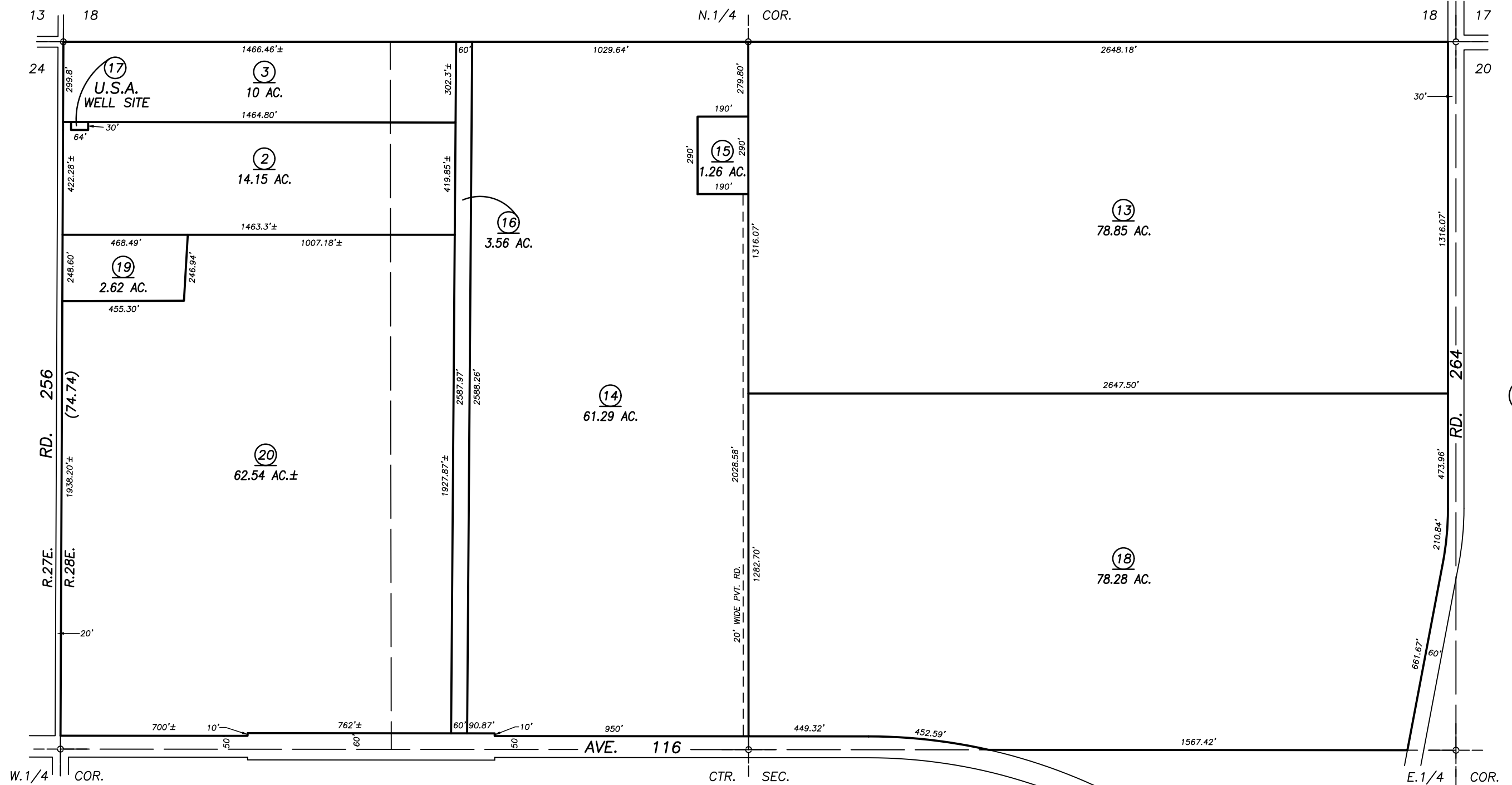
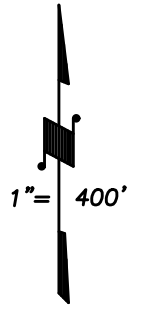


N1/2 OF SEC. 19, T.22S., R.28E., M.D.B.&M.

Tax Area Codes 303-16

126-001
126-006
126-007

DISCLAIMER
THIS MAP WAS PREPARED FOR LOCAL PROPERTY ASSESSMENT PURPOSES ONLY AND THE PARCELS SHOWN HEREON MAY NOT COMPLY WITH STATE AND LOCAL SUBDIVISION ORDINANCES, AND NO LIABILITY IS ASSUMED FOR THE USE OF THE INFORMATION SHOWN HEREON. R & T CODE SEC. 327, 408.3, ETC.



VICINITY OF PORTERVILLE
ASSESSOR'S MAPS BK. 303 , PG. 16
COUNTY OF TULARE, CALIFORNIA, U.S.A.

NOTE: Assessor's Parcel Numbers Shown in Circles (1) (123)
Assessor's Block Numbers Shown in Ellipses (1) (123)

2018-0062426	06/19/2019	WAC
REVISION	DATE	TECH