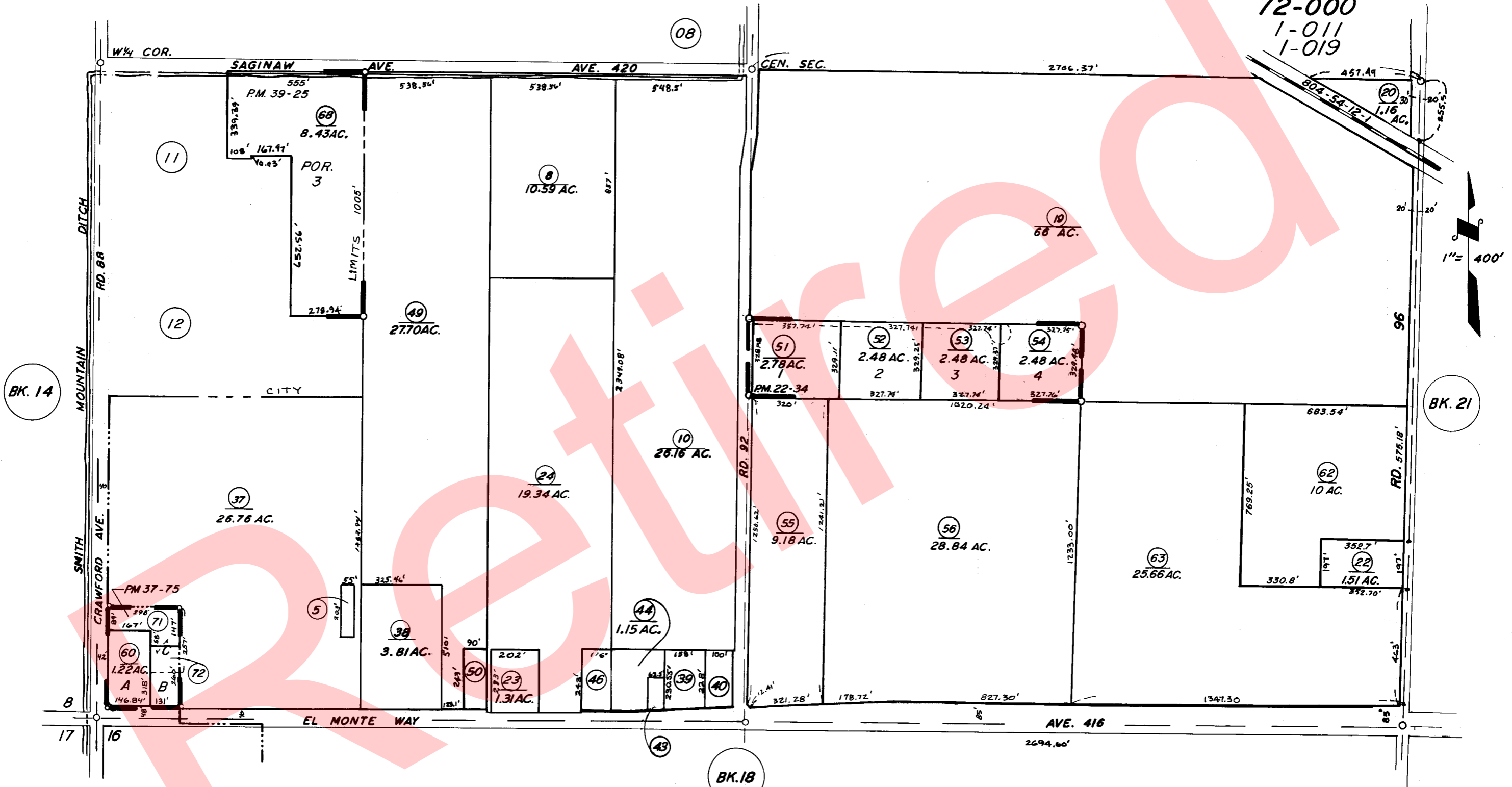


S 1/2 SEC. 9, T.16S., R.24E., M.D.B.&M.

TAX CODE AREA 13-09
72-000
1-011
1-019



PARCEL MAP 2133 P.M. 22-34
PARCEL MAP 3672 P.M. 37-75
PARCEL MAP 3822 P.M. 39-25

ASSESSOR'S MAPS BK.13, PG.09
COUNTY OF TULARE, CALIF.

NOTE-ASSESSOR'S BLOCK NUMBERS SHOWN IN ELLIPSES
ASSESSOR'S PARCEL NUMBERS SHOWN IN CIRCLES

