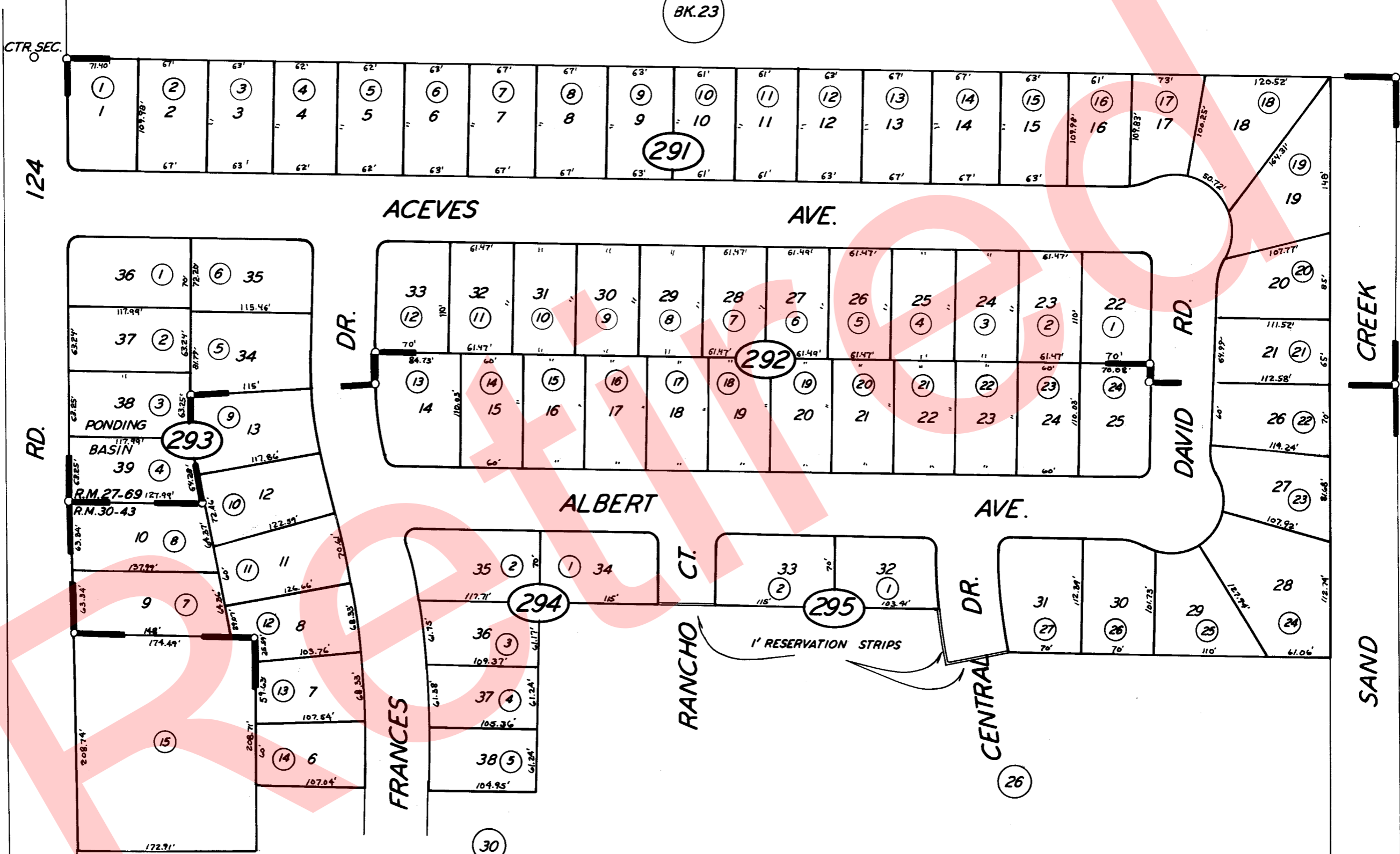


BK.23

CTR. SEC.

124

26



1" = 100'

27

TRACT NO. 541 R.M. 27-69
POR. TRACT NO. 573 R.M. 30-43

ASSESSOR'S MAPS BK. 21, PG. 29
COUNTY OF TULARE, CALIF.

NOTE—ASSESSOR'S BLOCK NUMBERS SHOWN IN ELIPSES
ASSESSOR'S PARCEL NUMBERS SHOWN IN CIRCLES